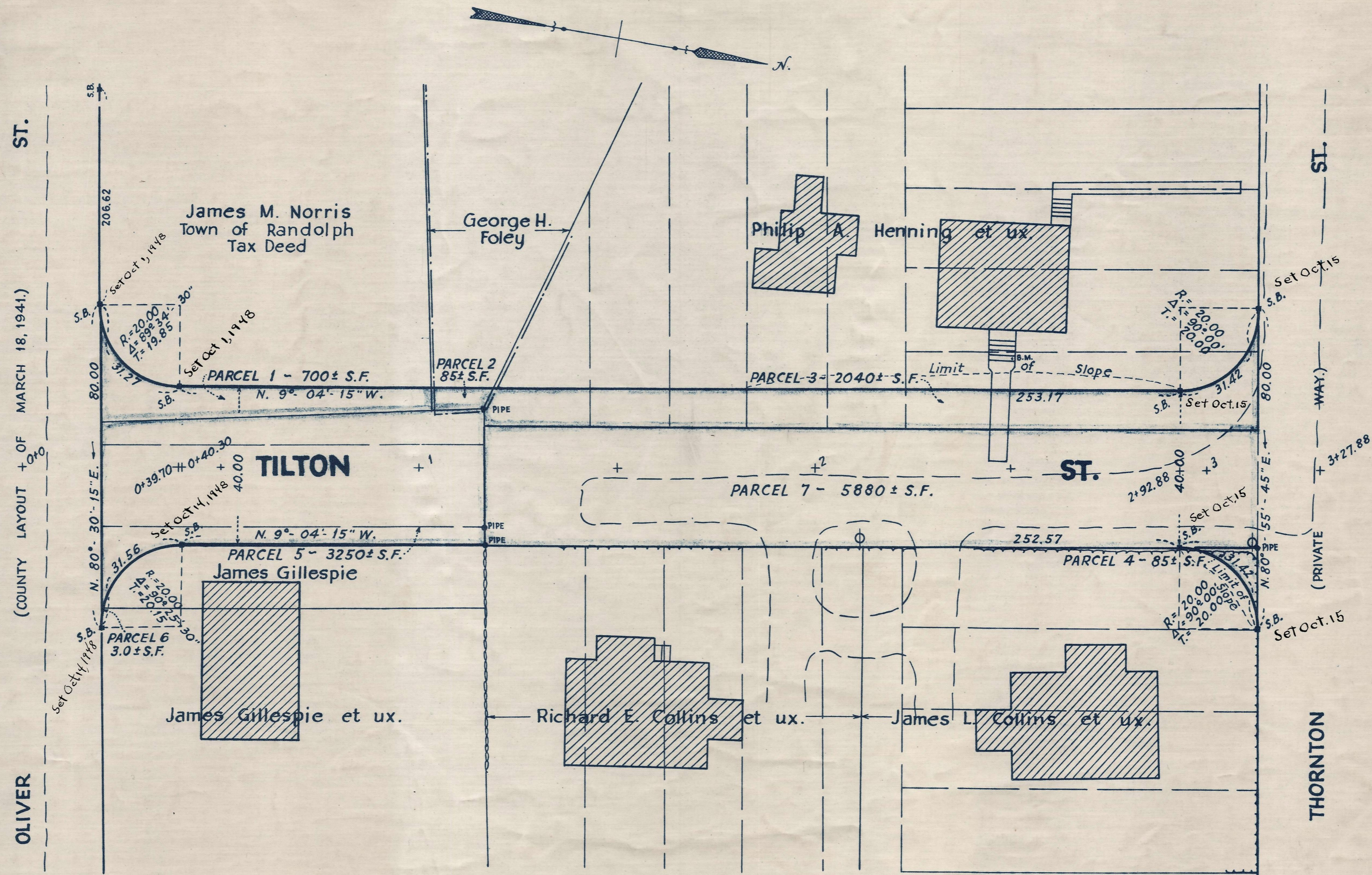
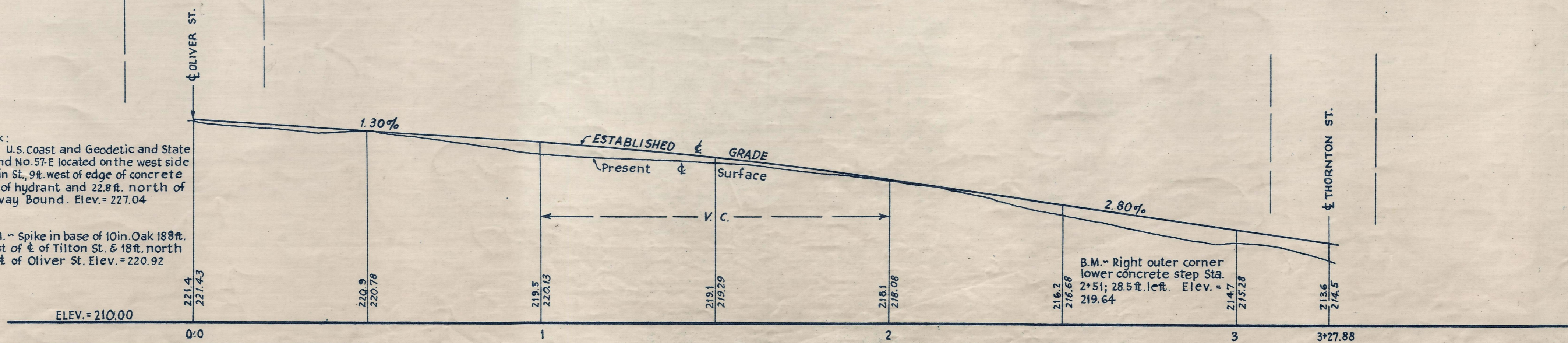


Plan and Profile
of
TILTON STREET
between
OLIVER STREET AND THORNTON STREET,
RANDOLPH
Laid Out as a Public Way
by the Norfolk County Commissioners
by Return dated November 12, 1947.
Horizontal Scale: 1 inch = 20 feet.
Vertical Scale: 1 inch = 4 feet.
Wallace S. Carson, County Engineer.
Fredrick A. Jewett, CHAIRMAN.



Bench Mark:
U.S. Coast and Geodetic and State
Survey Bound No. 57-E located on the west side
of North Main St., 9 ft. west of edge of concrete
hydrant and 22.8 ft. north
of Mass. Highway Bound. Elev. = 227.04

B.M. - Spike in base of 10 in. Oak 188 ft.
east of center of Tilton St. & 18 ft. north
of center of Oliver St. Elev. = 220.92



CTF. ORDER RELOCATION BK. 2730 PG. 48 DEC. 22, 1947
TKG. BK. 2723 PG. 529; PL. BK. 143 PL. 1077 REC. NOV. 21, 1947

DATE OF ENTRY DEC. 9, 1947