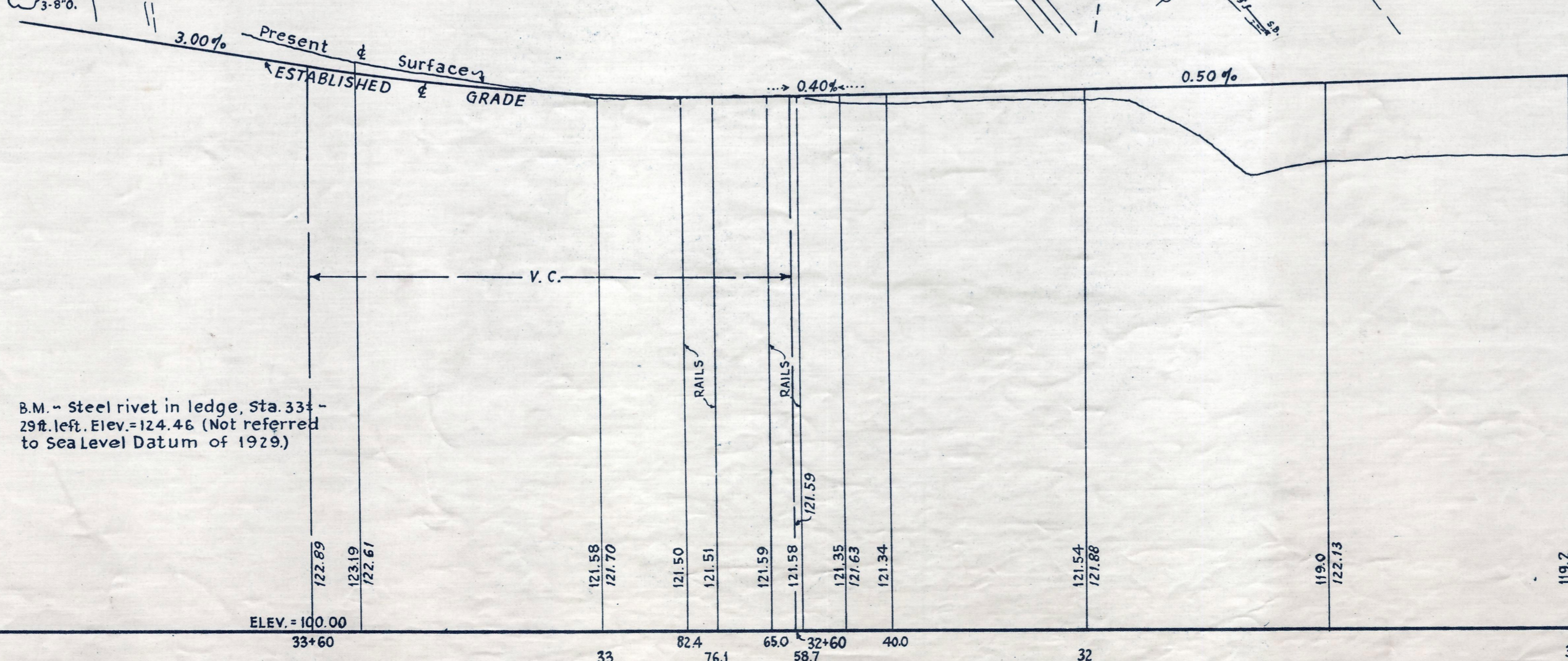
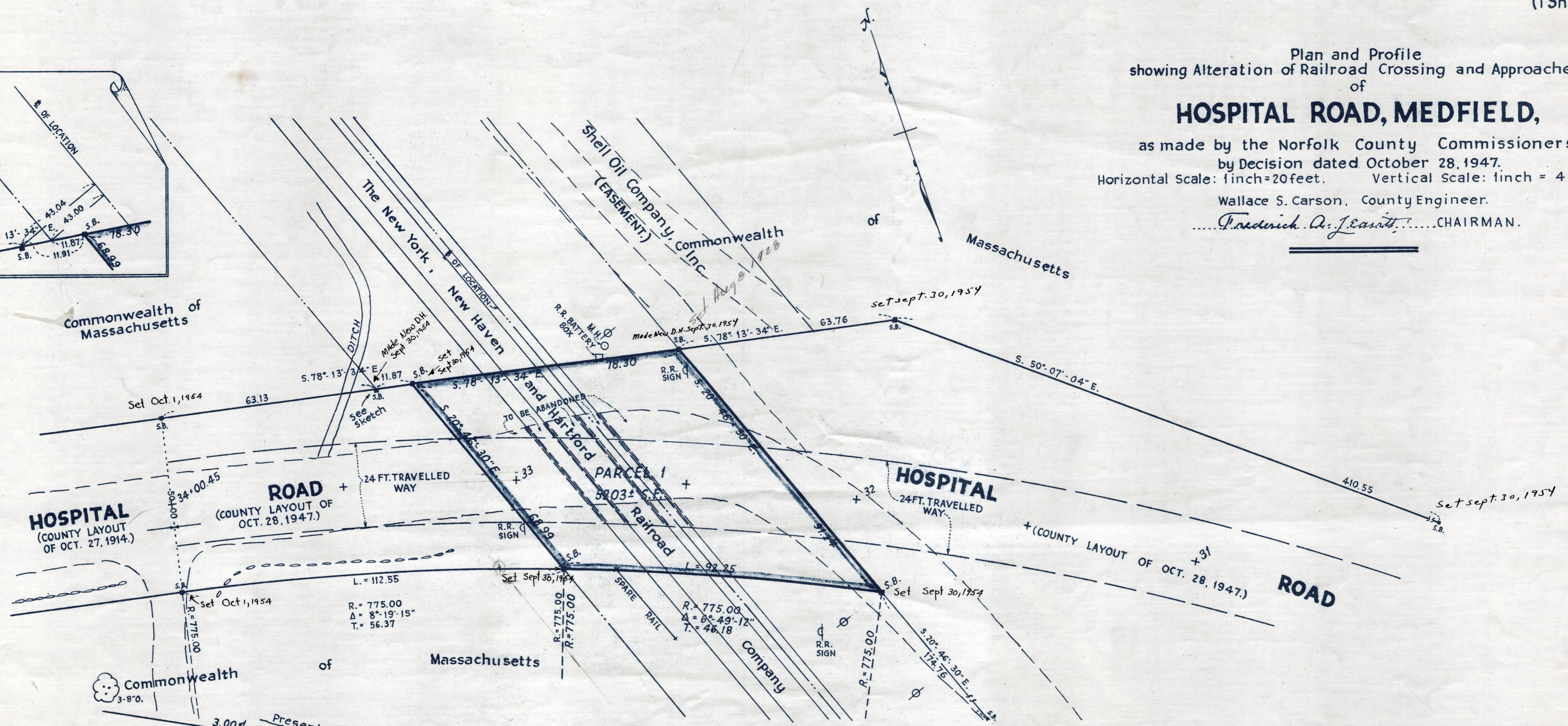
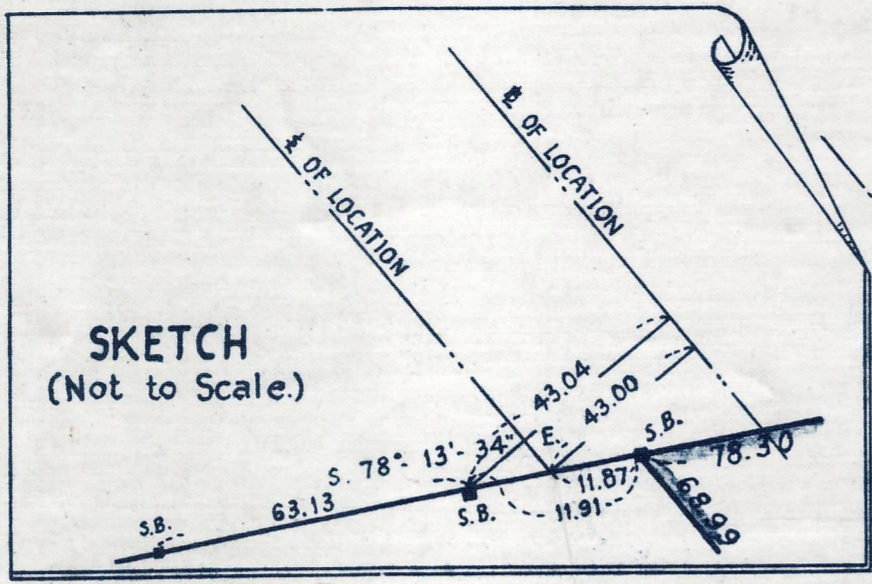


Plan and Profile
showing Alteration of Railroad Crossing and Approaches
of
HOSPITAL ROAD, MEDFIELD,
as made by the Norfolk County Commissioners
by Decision dated October 28, 1947.
Horizontal Scale: 1 inch = 20 feet. Vertical Scale: 1 inch = 4 feet.
Wallace S. Carson, County Engineer.
Frederick D. J. Casati, CHAIRMAN.



B.M. - Steel rivet in ledge, Sta. 33+29 ft. left. Elev. = 124.46 (Not referred to Sea Level Datum of 1929.)

B.M. - R.R. Spike in 36 in. Elm, Sta. 26+55 - 22 ft. left. Elev. = 131.39 (Not referred to Sea Level Datum of 1929.)