

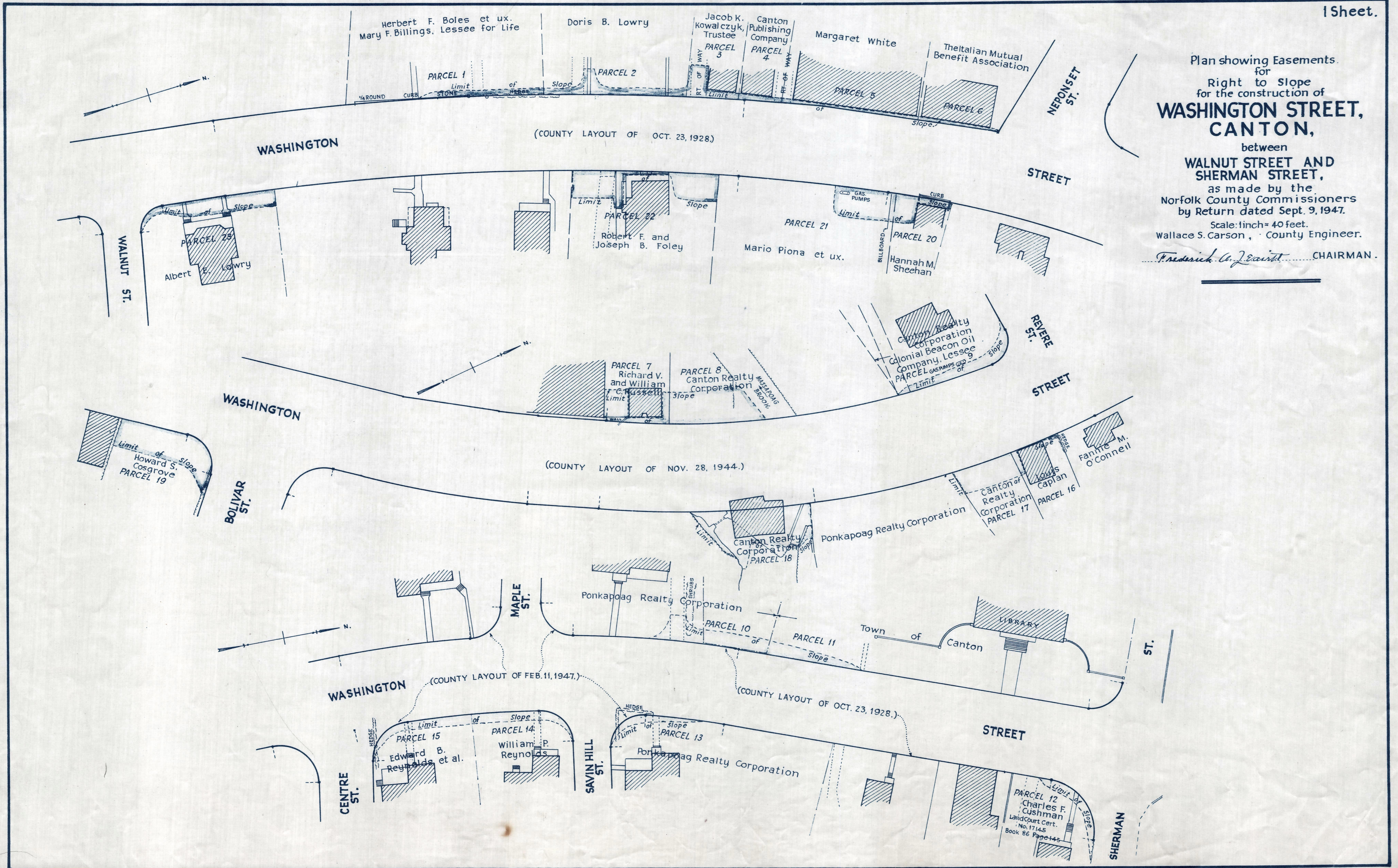
Plan showing Easements for Right to Slope for the construction of **WASHINGTON STREET, CANTON,**

between **WALNUT STREET AND SHERMAN STREET,**

as made by the Norfolk County Commissioners by Return dated Sept. 9, 1947.

Scale: 1 inch = 40 feet.
Wallace S. Carson, County Engineer.

Fredrick G. Zwart CHAIRMAN.



CRTF. ORDER RELOCATION BK. 2709 PG. 398 SEPT. 29, 1947
TK6. BK. 2706 PG. 551; PL. BK. 142 PL. B31 REC. SEPT. 16, 1947