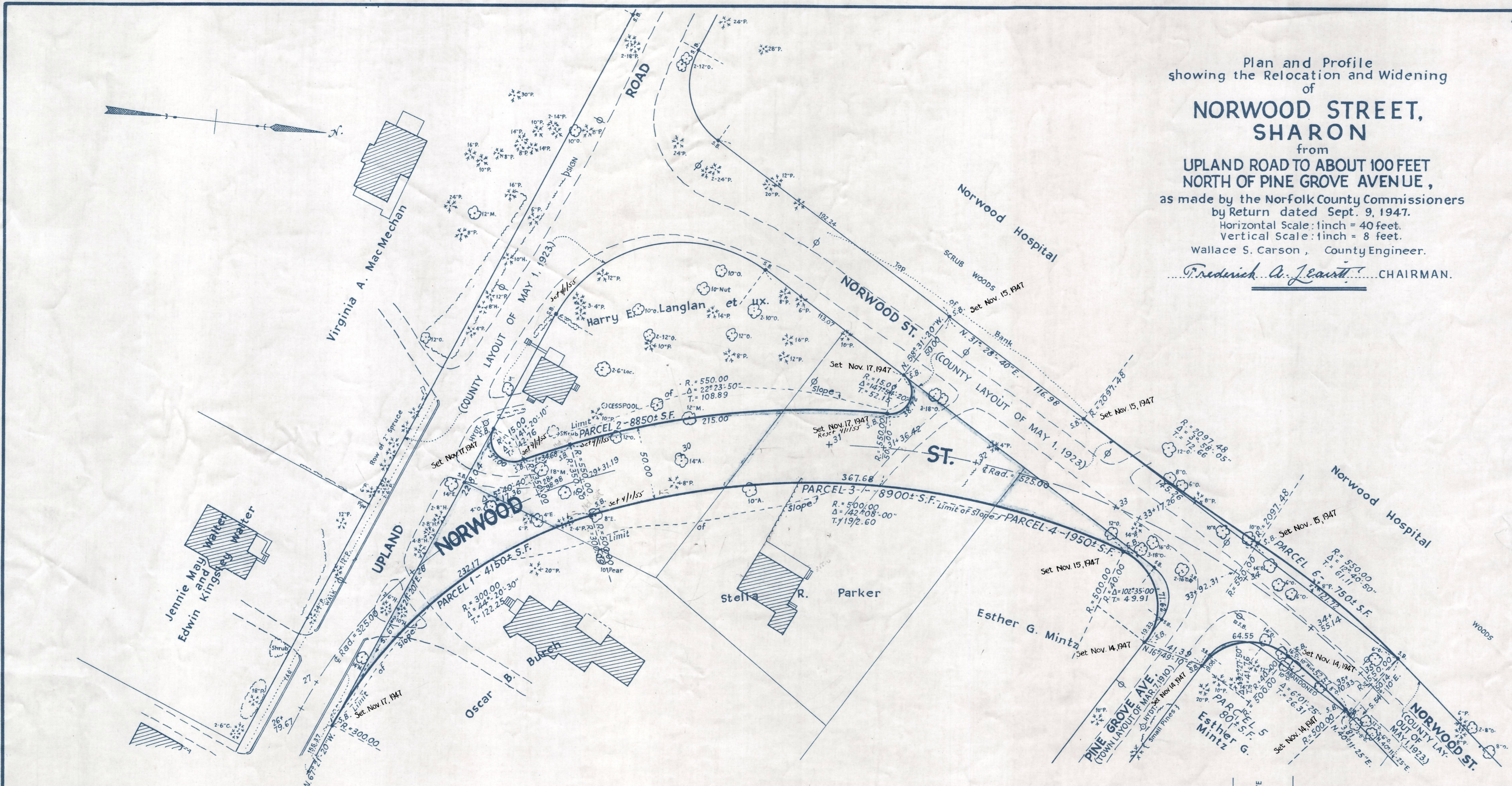


Plan and Profile  
showing the Relocation and Widening  
of  
**NORWOOD STREET,  
SHARON**  
from  
**UPLAND ROAD TO ABOUT 100 FEET  
NORTH OF PINE GROVE AVENUE,**  
as made by the Norfolk County Commissioners  
by Return dated Sept. 9, 1947.  
Horizontal Scale: 1 inch = 40 feet.  
Vertical Scale: 1 inch = 8 feet.  
Wallace S. Carson, County Engineer.  
*Fredrick A. Leavitt*, CHAIRMAN.

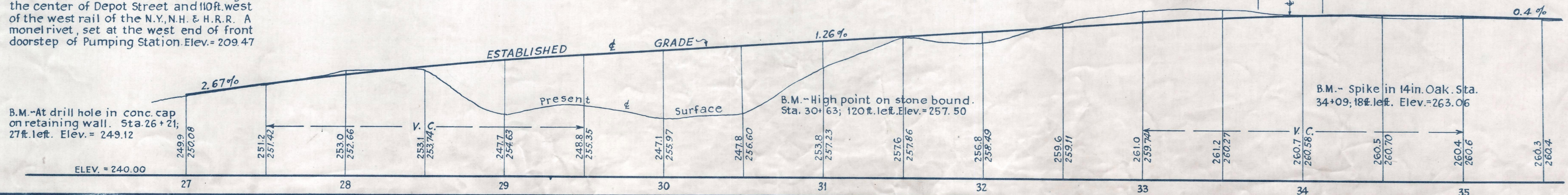


Bench Mark :-  
A Mass. Geodetic bench mark No. 68 H-13 located about 86 ft. northerly of the center of Depot Street and 110 ft. west of the west rail of the N.Y., N.H. & H.R.R. A monorivet, set at the west end of front doorstep of Pumping Station. Elev. = 209.47

B.M. - At drill hole in conc. cap on retaining wall. Sta. 26+21; 27 ft. left. Elev. = 249.12

B.M. - High point on stone bound. Sta. 30+63; 120 ft. left. Elev. = 257.50

B.M. - Spike in 14 in. Oak. Sta. 34+09; 18 ft. left. Elev. = 263.06



CRTF. ORDER RELOCATION BK. 2716 PG. 395 OCT. 24, 1947  
TK6. BK. 2707 PG. 485; PL. BK. 143 PL. 845 REC. SEPT. 19, 1947

Date of Entry Oct. 10, 1947.