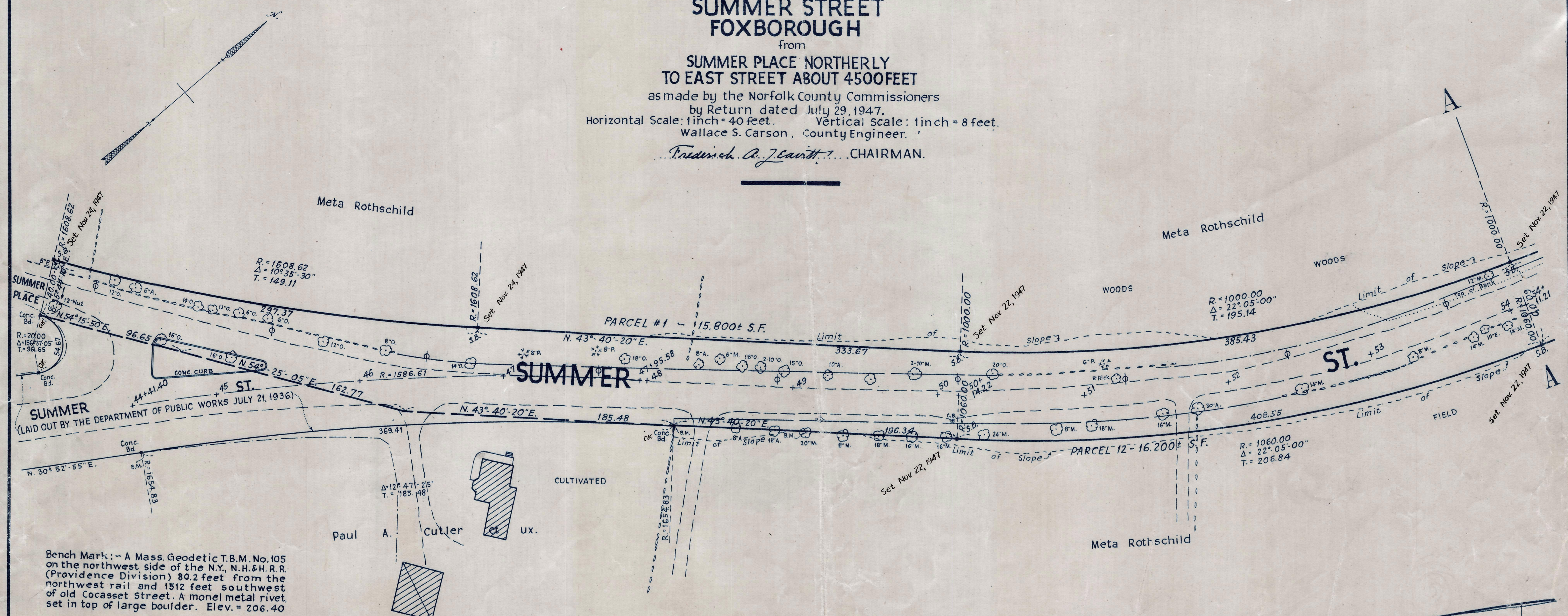
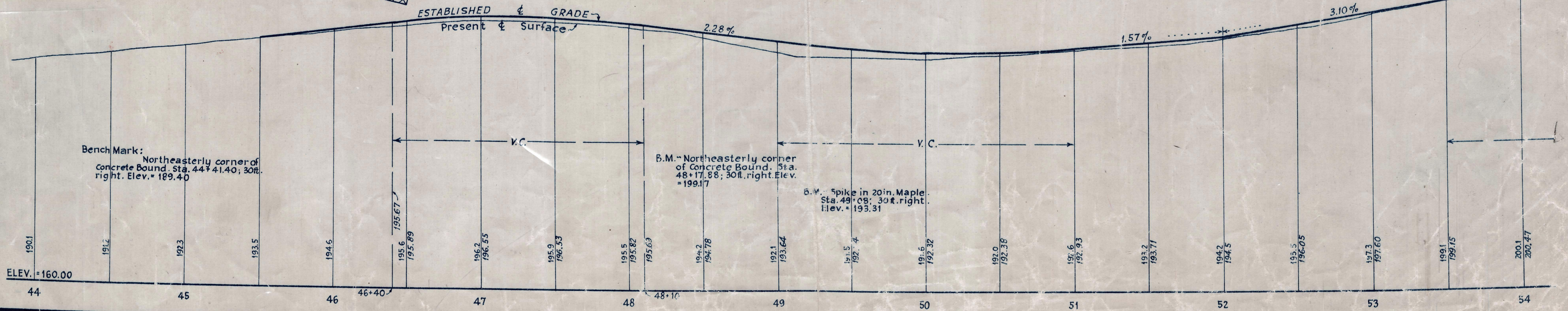


Plan and Profile  
showing the Layout of  
**SUMMER STREET**  
FOXBOROUGH

from  
**SUMMER PLACE NORTHERLY  
TO EAST STREET ABOUT 4500 FEET**  
as made by the Norfolk County Commissioners  
by Return dated July 29, 1947.  
Horizontal Scale: 1 inch = 40 feet. Vertical Scale: 1 inch = 8 feet.  
Wallace S. Carson, County Engineer.  
*Frederick A. Jewett* CHAIRMAN.



Bench Mark: - A Mass. Geodetic T.B.M. No. 105 on the northwest side of the N.Y. N.H. & H.R.R. (Providence Division) 80.2 feet from the northwest rail and 1512 feet southwest of old Cocasset Street. A monel metal rivet, set in top of large boulder. Elev. = 206.40



Date of Entry Oct. 30, 1947.