

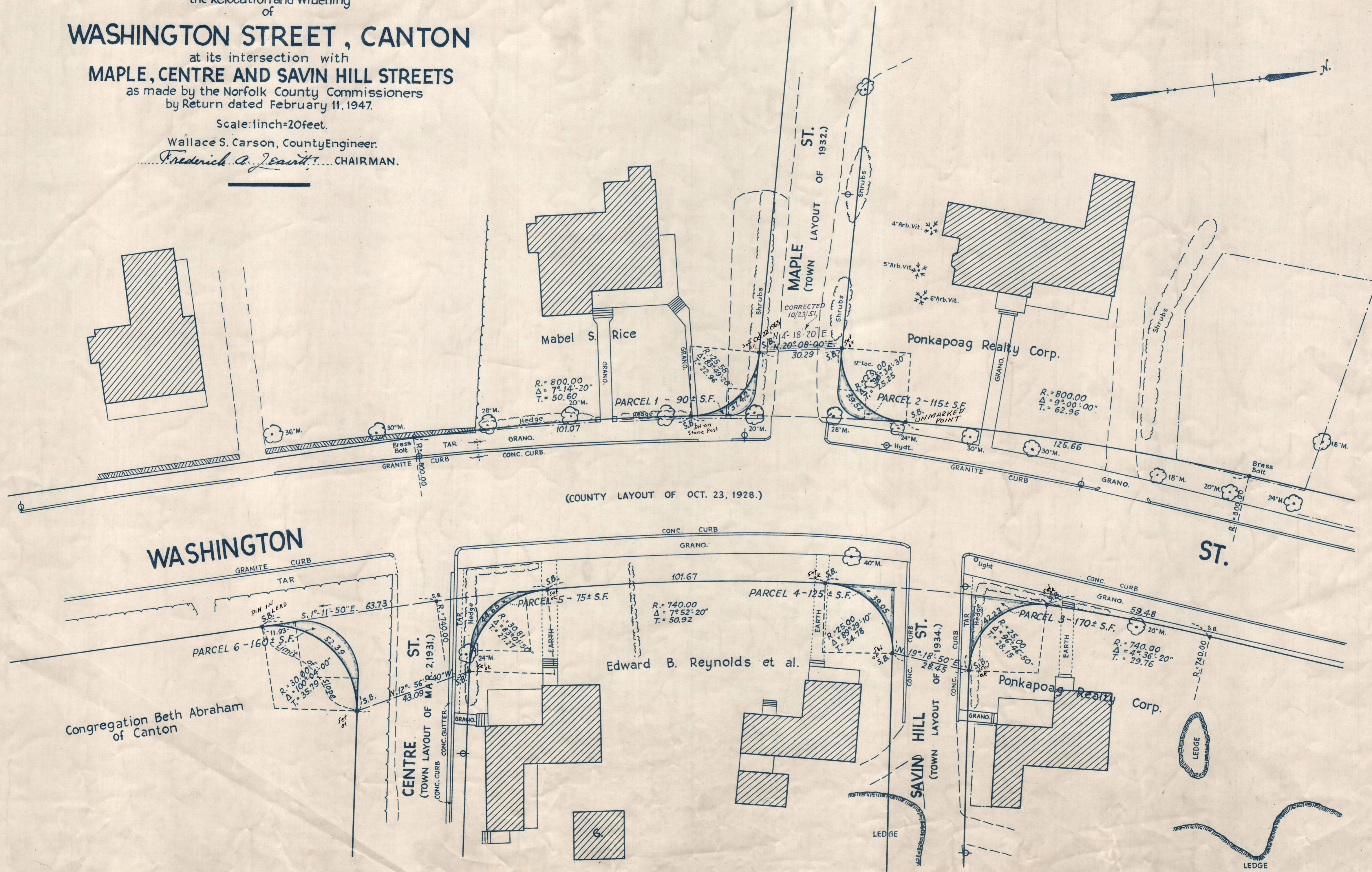
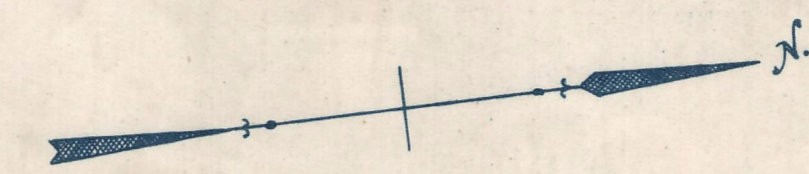
Plan showing
the Relocation and Widening
of
WASHINGTON STREET, CANTON

at its intersection with
MAPLE, CENTRE AND SAVIN HILL STREETS
as made by the Norfolk County Commissioners
by Return dated February 11, 1947.

Scale: 1 inch = 20 feet.

Wallace S. Carson, County Engineer.

Frederick A. J. Savitt, CHAIRMAN.



CRTF. ORDER RELOCATION BK. 2709 Pg. 398 SEPT. 29, 1947
TKG. BK. 2705 Pg. 422; PL. BK. 142 PL. 828 REC. SEPT. 11, 1947