

Plan and Profile
showing the Relocation and Widening
of a Portion of
NEWTON STREET, BROOKLINE

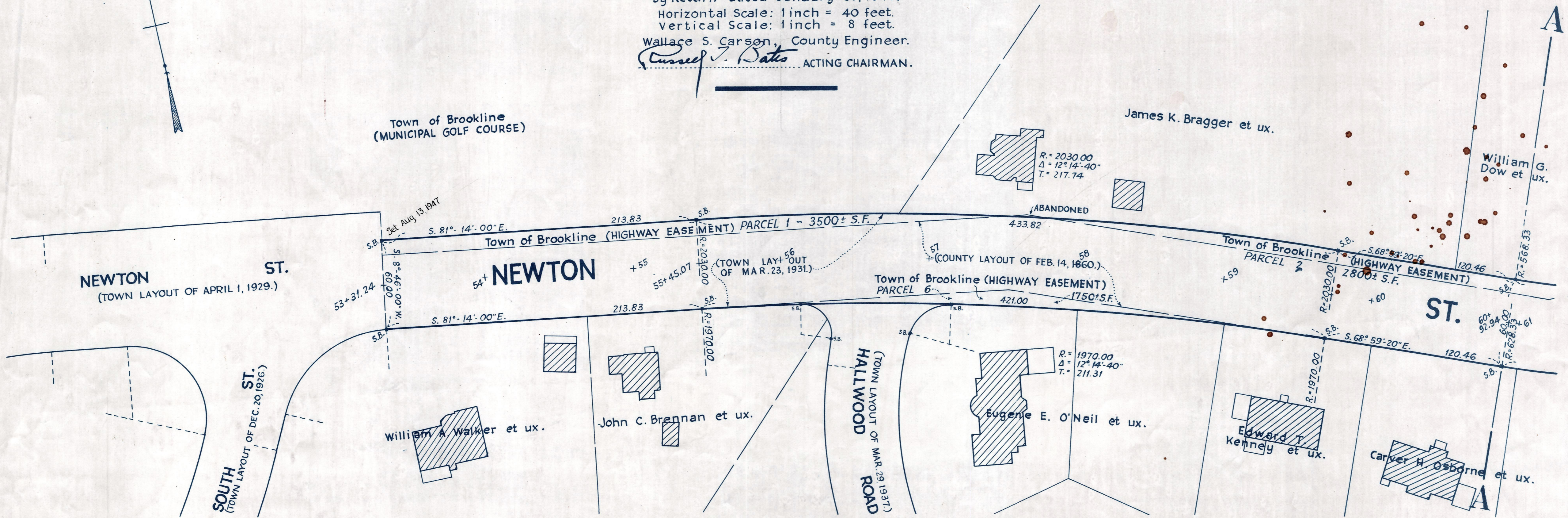
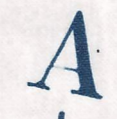
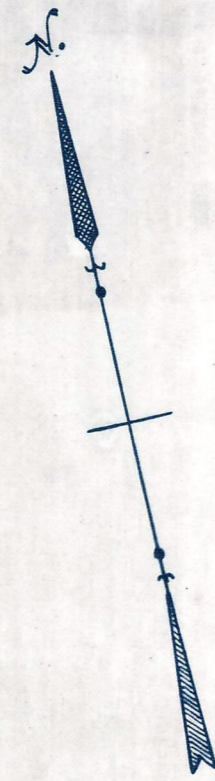
from
SOUTH STREET TO GROVE STREET

as made by the Norfolk County Commissioners
by Return dated January 28, 1947.

Horizontal Scale: 1 inch = 40 feet.
Vertical Scale: 1 inch = 8 feet.

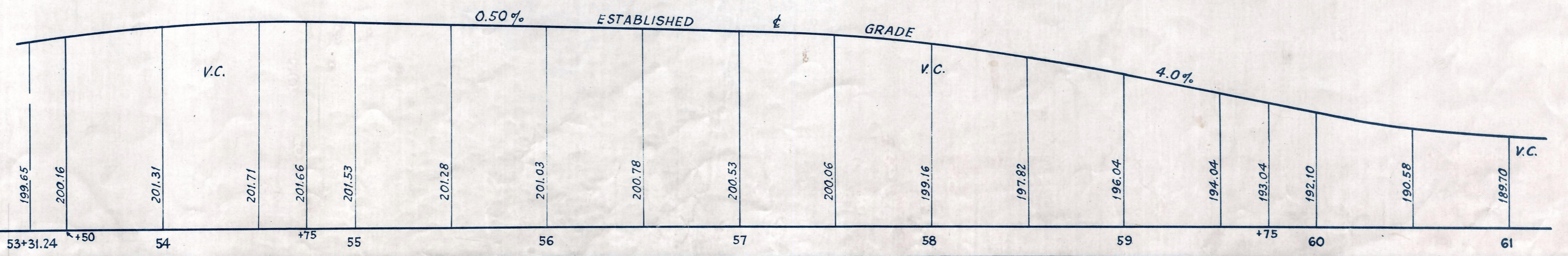
Wallace S. Carson, County Engineer.

Charles J. Bates ACTING CHAIRMAN.



Bench Mark:
East outer corner sill
Boiler Room door of Pumping Station.
Sta. 68+77; 48 ft. left. Elev. = 192.575

ELEV. = 180.00 BROOKLINE BASE



CRTF. ORDER RELOCATION BK. 2670 PG. 303 MAR. 27, 1947
TKG. BK. 2664 PG. 301; PL. BK. 140, PLS. 133 & 134 REC. FEB. 20, 1947

325-1

Date of Entry Mar. 6, 1947. (No Bounds to be set)