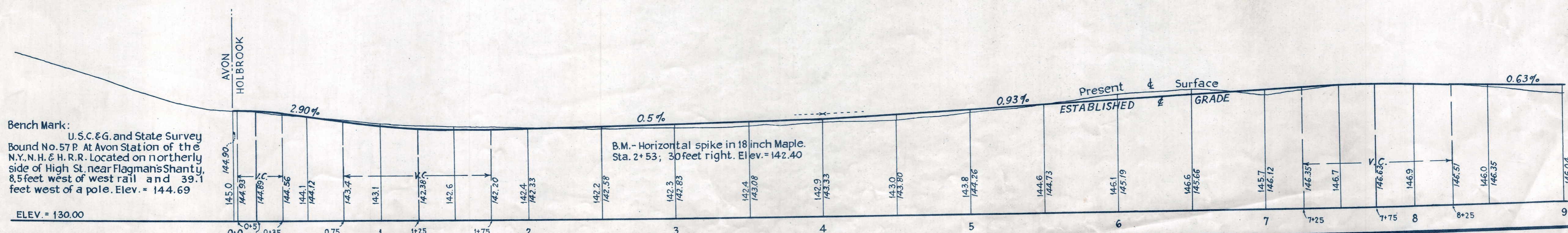
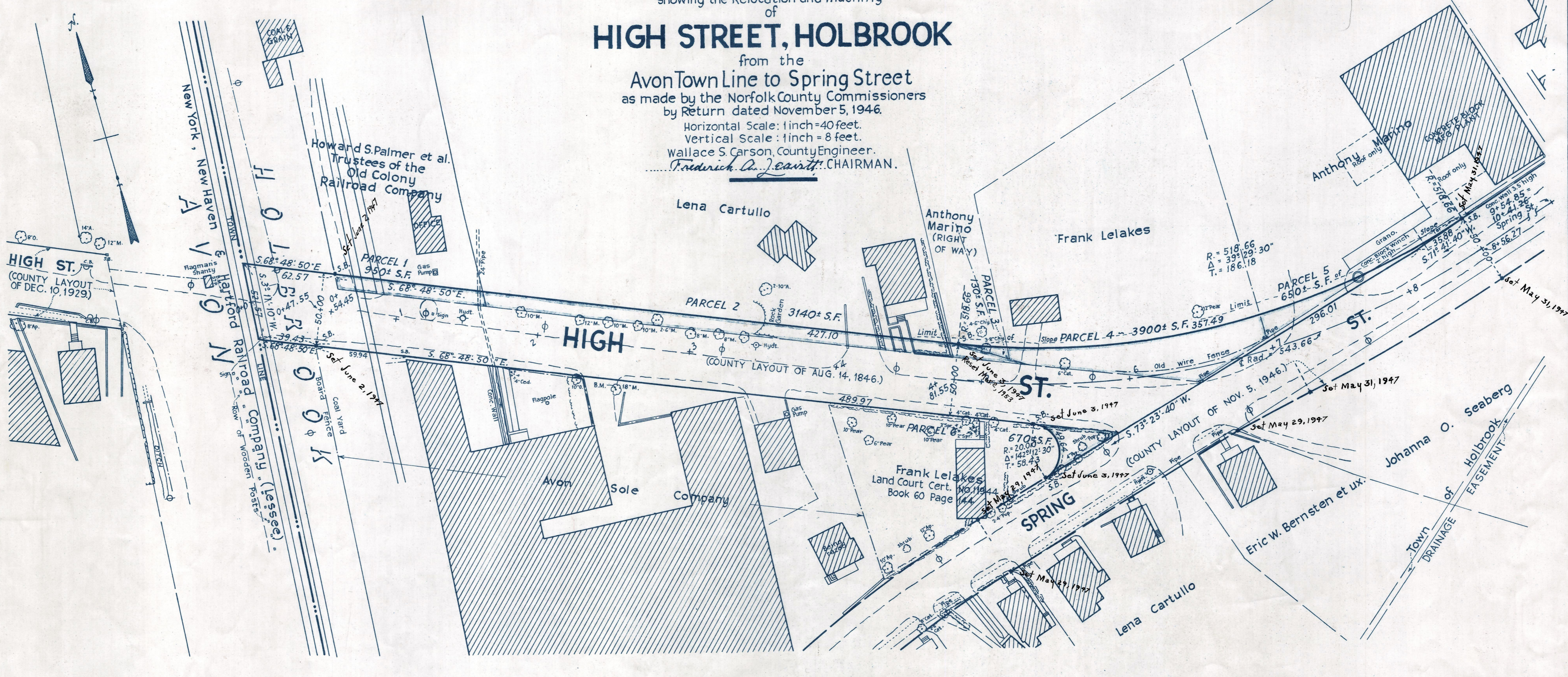


# Plan and Profile showing the Relocation and Widening of HIGH STREET, HOLBROOK

from the Avon Town Line to Spring Street as made by the Norfolk County Commissioners by Return dated November 5, 1946.

Horizontal Scale: 1 inch = 40 feet.  
Vertical Scale: 1 inch = 8 feet.  
Wallace S. Carson, County Engineer.  
*Fredrick A. Jewett*, CHAIRMAN.



Bench Mark: U.S.C. & G. and State Survey Bound No. 57 P. At Avon Station of the N.Y., N.H. & H.R.R. Located on northerly side of High St. near Flagman's Shanty, 8.5 feet west of west rail and 39.1 feet west of a pole. Elev. = 144.69

B.M. - Horizontal spike in 18 inch Maple. Sta. 2+53; 30 feet right. Elev. = 142.40