

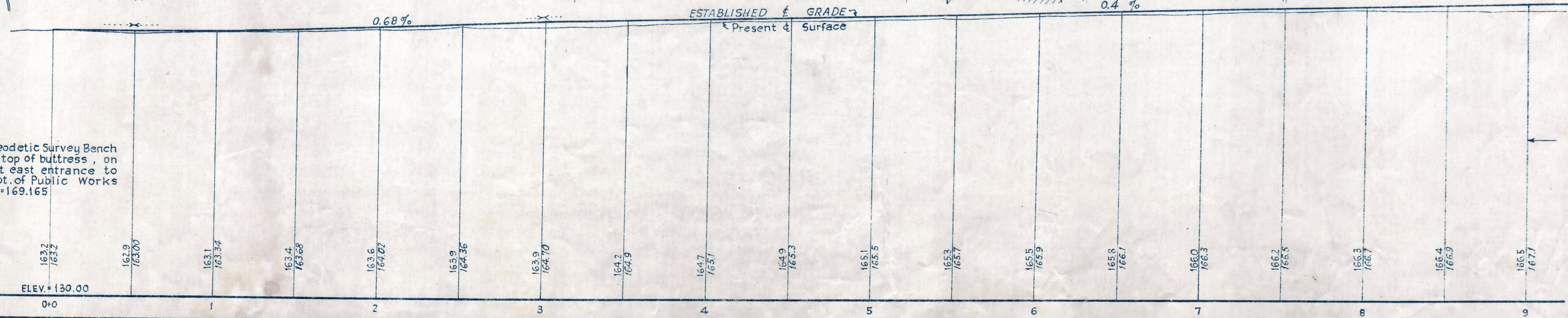
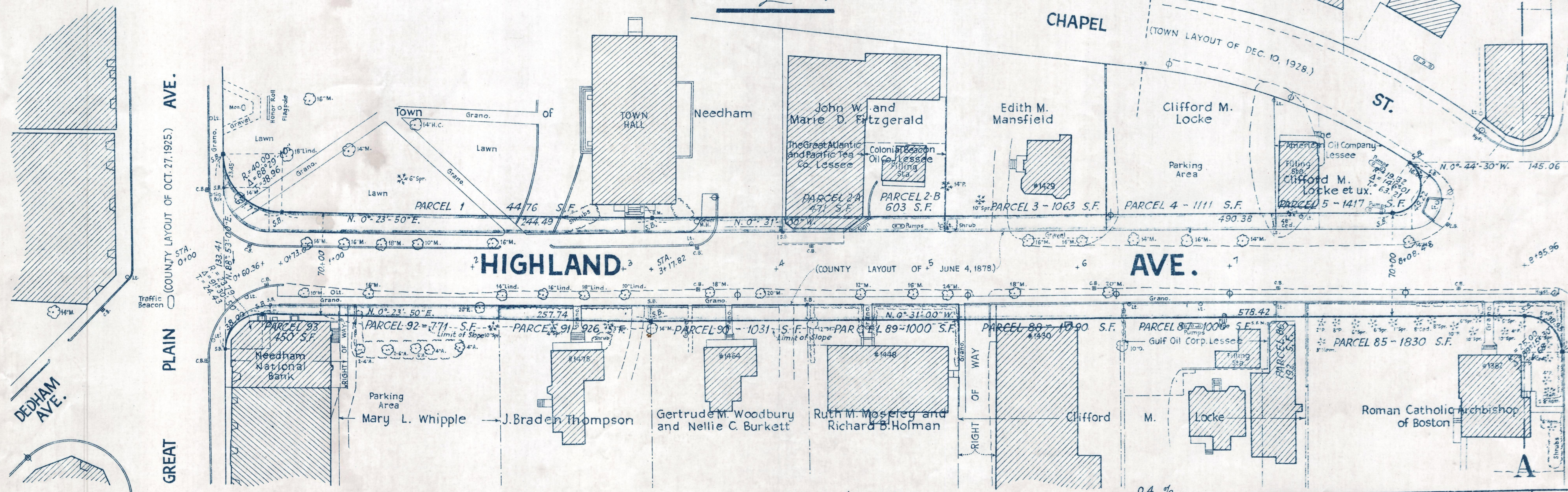
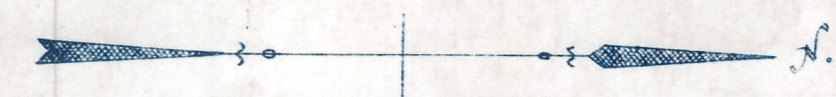
Plan and Profile  
 showing the Relocation and Widening  
 of a Portion of  
**HIGHLAND AVENUE, NEEDHAM**  
 from  
**GREAT PLAIN AVENUE TO WEBSTER STREET**

as made by the Norfolk County Commissioners  
 by Return dated April 2, 1946.

Horizontal Scale: 1 inch = 40 feet.  
 Vertical Scale: 1 inch = 8 feet.

Wallace S. Carson, County Engineer.

*Frederick A. J. Smith*, CHAIRMAN.



Bench Mark -  
 A Mass. Geodetic Survey Bench  
 Mark No. AB 15. In the top of buttress, on  
 north side of steps, at east entrance to  
 Town Hall. A Mass. Dept. of Public Works  
 standard disk. Elev. = 169.165

THIS LAYOUT VOID  
 BY ACTION OF THE  
 SUPREME COURT  
 SEE CERT. RECORDED  
 IN BOOK 3129 PG. 347

SEE CORRESPONDENCE FILE #268  
 FOR COPY OF COURT DECISION  
 See Bk. 324 P. 293 of Supreme Ct.

318-1