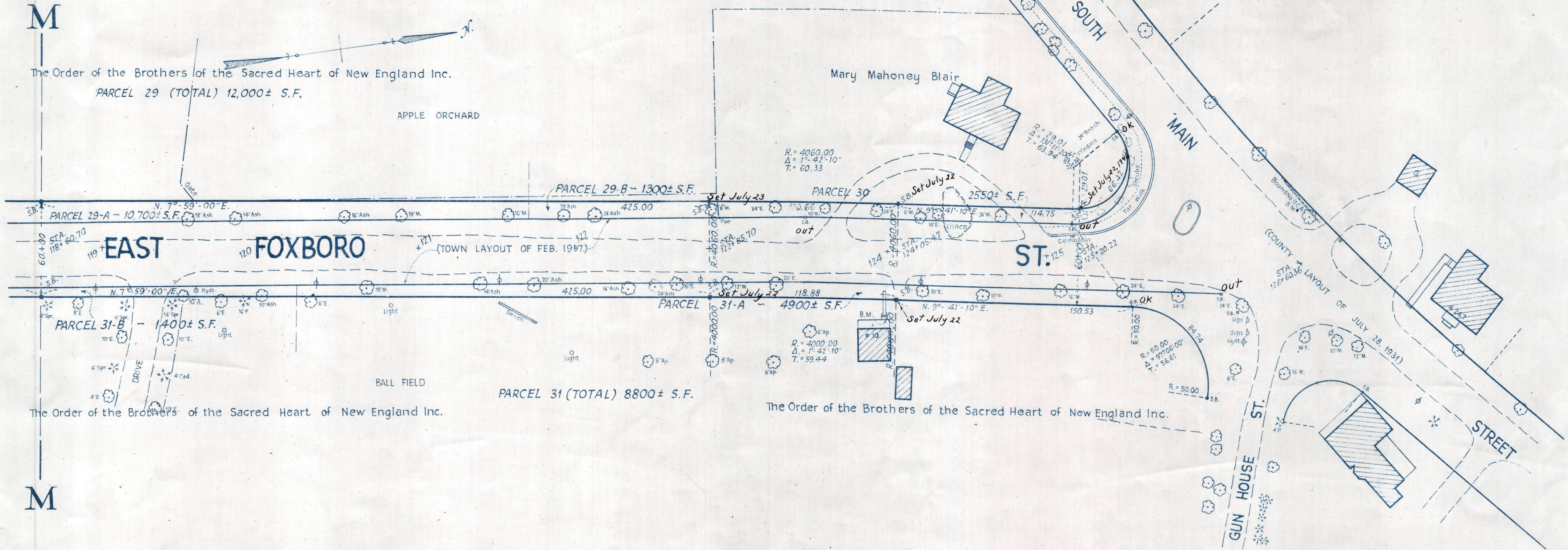


M

The Order of the Brothers of the Sacred Heart of New England Inc.
PARCEL 29 (TOTAL) 12,000± S.F.

APPLE ORCHARD



M

The Order of the Brothers of the Sacred Heart of New England Inc.

PARCEL 31 (TOTAL) 8800± S.F.

The Order of the Brothers of the Sacred Heart of New England Inc.

ESTABLISHED		GRADE		Present Surface	
0.5 %		0.5 %		0.5 %	
269.2	269.50				
269.4	269.75				
269.7	270.00				
270.0	270.25				
270.4	270.50				
270.8	270.75				
270.9	271.00				
271.2	271.25				
271.5	271.50				
271.6	271.75				
271.8	272.00				
272.2	272.25				
272.3	272.50				
272.4	272.75				
272.7	273.00				
273.1	273.25				
273.4	273.50				

B.M.:-
Left outer corner lower concrete step
to House No.10. Sta.124+01; 40ft. right. Elev.
= 272.68

Bench Mark:-
A U.S.C.&G.S. and State Survey Bound No.11 C A
on South Main St. at the intersection of East Foxboro and
Gun House Streets, 66 ft. southeast of the southwest
corner of garage, 100.2 ft. south of the southwest corner of
house No.247; 6.5 ft. south from a 30in. Maple. Elev.=273.55