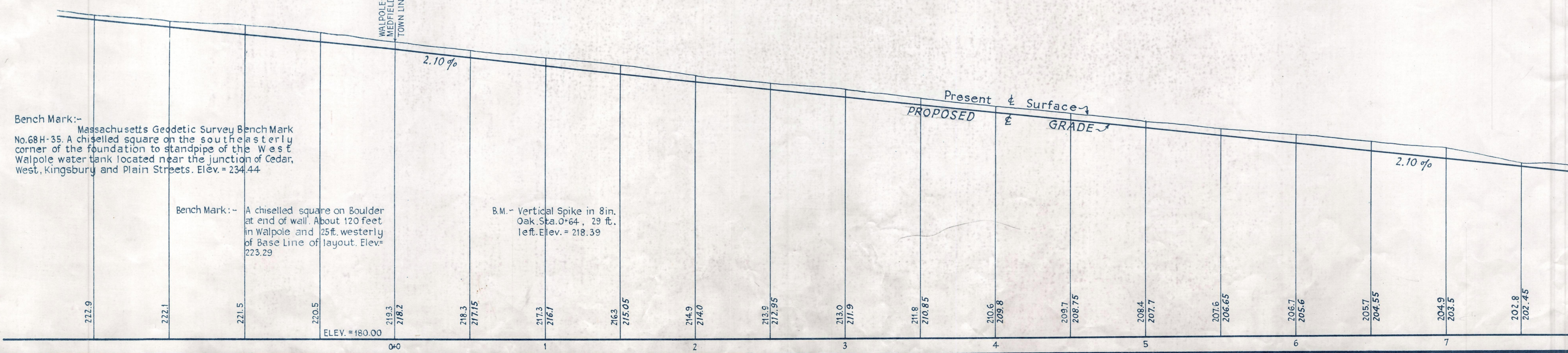
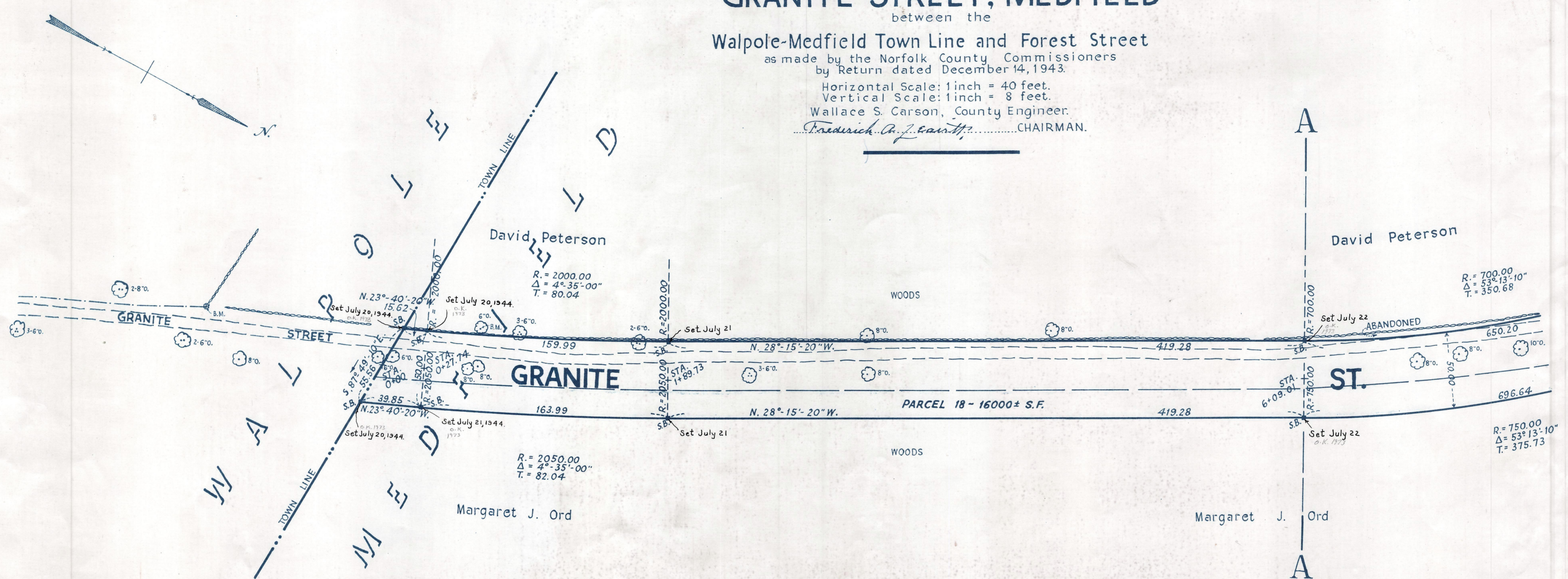


Plan and Profile
showing the Relocation and Widening
of a portion of
GRANITE STREET, MEDFIELD
between the
Walpole-Medfield Town Line and Forest Street
as made by the Norfolk County Commissioners
by Return dated December 14, 1943.
Horizontal Scale: 1 inch = 40 feet.
Vertical Scale: 1 inch = 8 feet.
Wallace S. Carson, County Engineer.
Fredrich A. J. Caruth, CHAIRMAN.



Bench Mark:-
Massachusetts Geddetic Survey Bench Mark
No. 68 H-35. A chiselled square on the south easterly
corner of the foundation to standpipe of the West
Walpole water tank located near the junction of Cedar,
West, Kingsbury and Plain Streets. Elev. = 234.44

Bench Mark:-
A chiselled square on Boulder
at end of wall. About 120 feet
in Walpole and 25 ft. westerly
of Base Line of layout. Elev. =
223.29

B.M. - Vertical Spike in 8 in.
Oak Sta. 0+64, 29 ft.
left. Elev. = 218.39