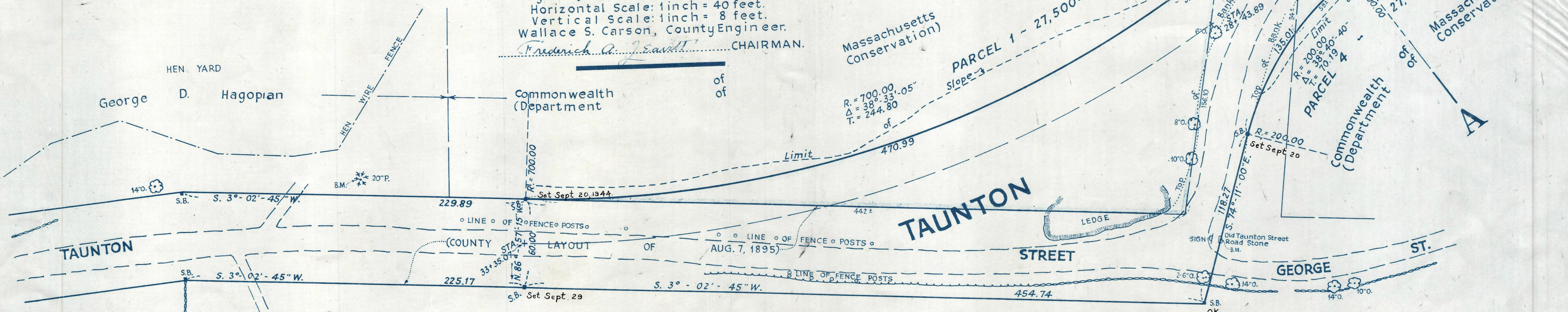


TAUNTON STREET, WRENTHAM

NORTH OF GEORGE STREET TO THE WRENTHAM-PLAINVILLE TOWN LINE

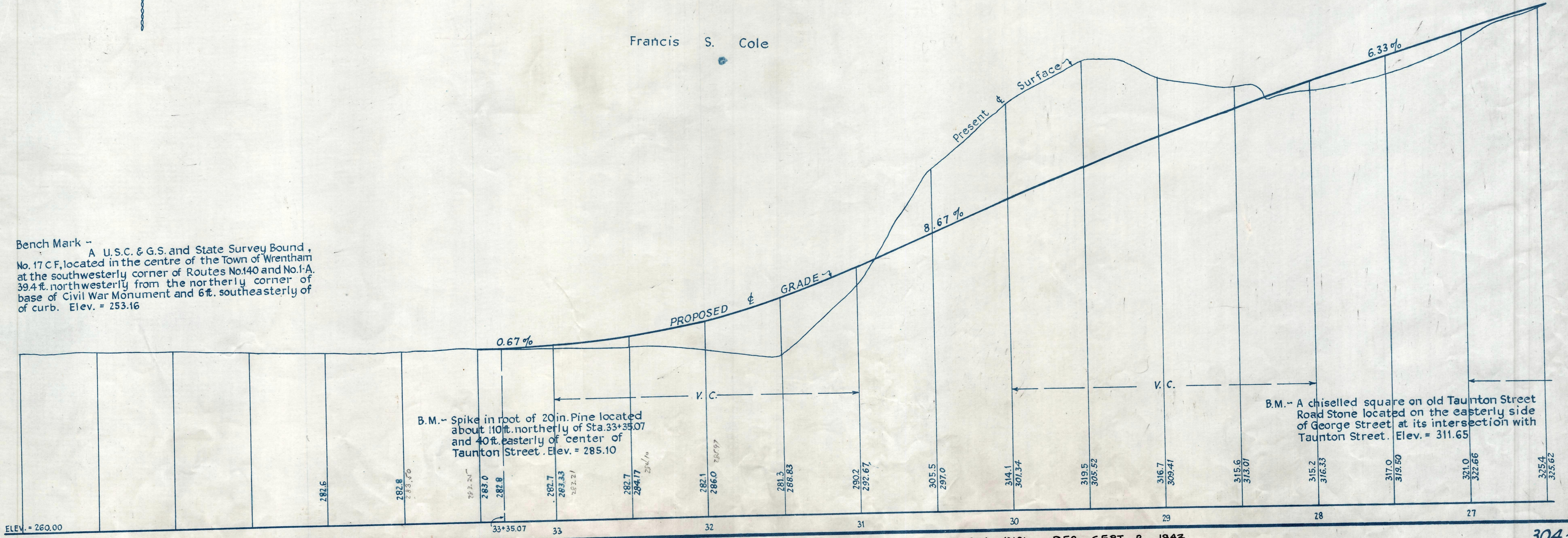
as made by the Norfolk County Commissioners
by Return dated August 10, 1943.
Horizontal Scale: 1 inch = 40 feet.
Vertical Scale: 1 inch = 8 feet.
Wallace S. Carson, County Engineer.

Frederick A. Leavitt CHAIRMAN.



Francis S. Cole

Bench Mark --
A U.S.C. & G.S. and State Survey Bound,
No. 17 C F, located in the centre of the Town of Wrentham
at the southwesterly corner of Routes No. 140 and No. 1-A,
39.4 ft. northwesterly from the northerly corner of
base of Civil War Monument and 6 ft. southeasterly of
of curb. Elev. = 253.16



B.M. -- A chiselled square on old Taunton Street
Road Stone located on the easterly side
of George Street at its intersection with
Taunton Street. Elev. = 311.65