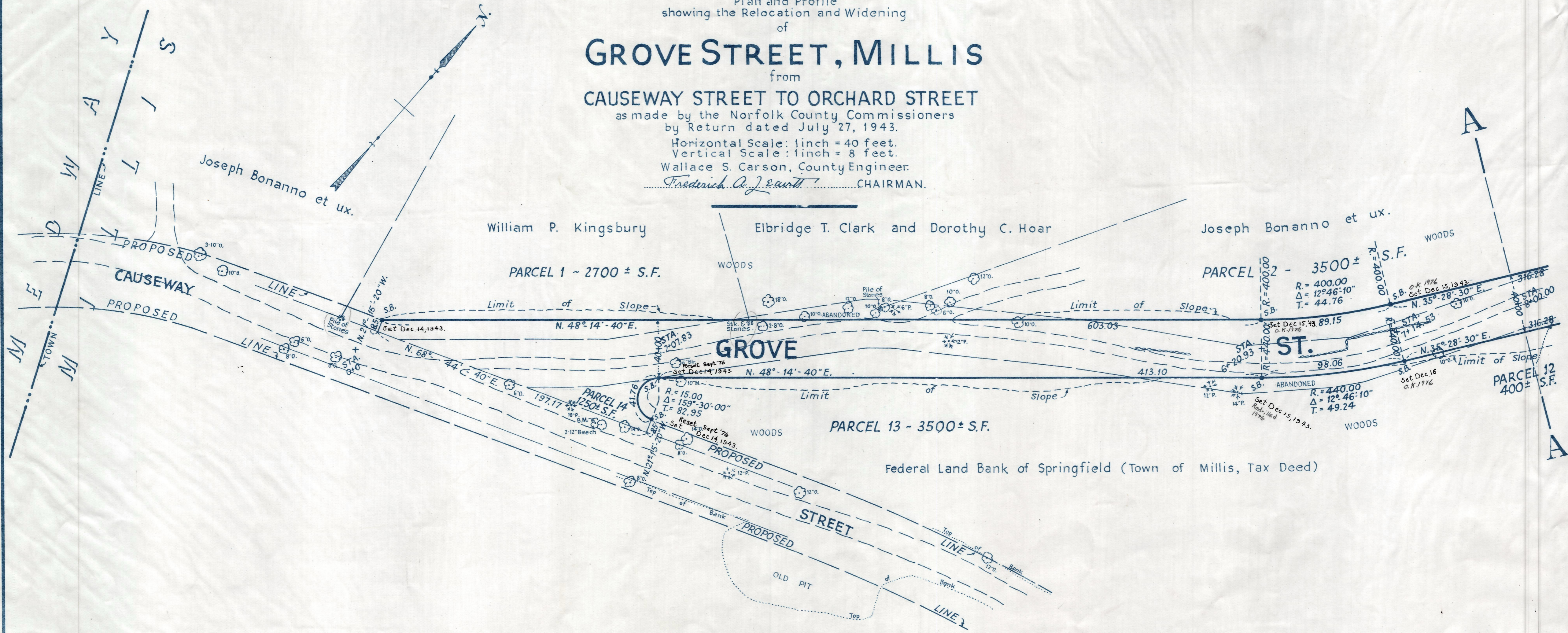
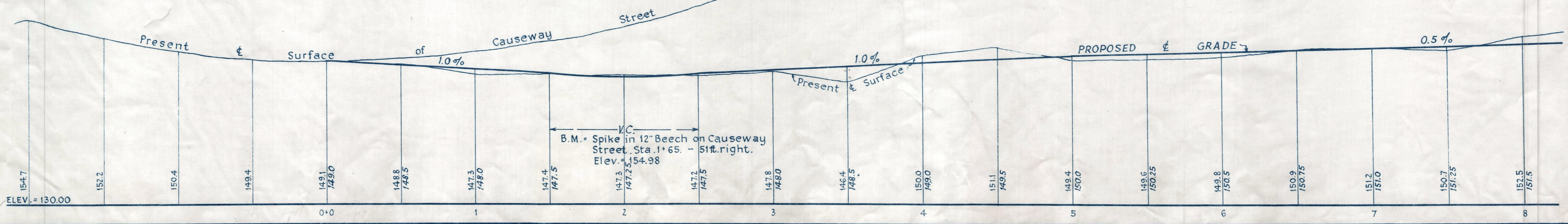


Note: Poles indicated thus: φ

Plan and Profile
showing the Relocation and Widening
of
GROVE STREET, MILLIS
from
CAUSEWAY STREET TO ORCHARD STREET
as made by the Norfolk County Commissioners
by Return dated July 27, 1943.
Horizontal Scale: 1 inch = 40 feet.
Vertical Scale: 1 inch = 8 feet.
Wallace S. Carson, County Engineer.
Frederick A. J. Swett CHAIRMAN.



Bench Mark:
U.S. Coast and Geodetic and State Survey Bound
No. 52-F located at the northwest corner of the intersection
of Exchange Street and the N.Y., N.H. & H.R.R. 25 ft. ± west of
center line of Exchange Street 10 ft. from west rail and 123 ft.
northeast of northeast corner of Millis Railroad Station.
Elev. = 162.65



Date of Entry Nov. 22, 1943.