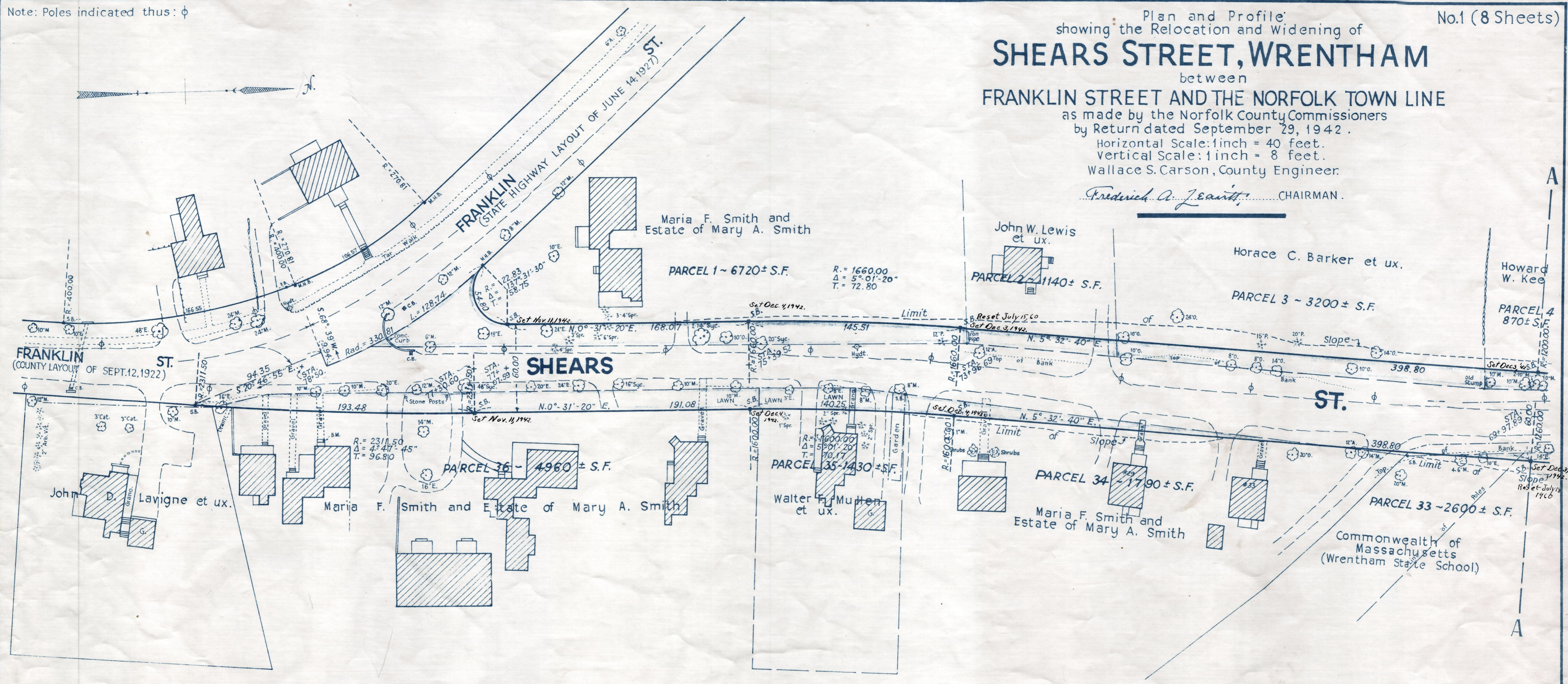


Plan and Profile
showing the Relocation and Widening of
SHEARS STREET, WRENTHAM

between
FRANKLIN STREET AND THE NORFOLK TOWN LINE
as made by the Norfolk County Commissioners
by Return dated September 29, 1942.
Horizontal Scale: 1 inch = 40 feet.
Vertical Scale: 1 inch = 8 feet.
Wallace S. Carson, County Engineer.

Fredrick A. Jeantit, CHAIRMAN.

Note: Poles indicated thus: ϕ



Bench Mark: U.S. Coast and Geodetic and State Survey
Bound No. 17 C G located on the north
side of Franklin Street and about 227 feet
west from center of Park Street and 14.6 ft.
north from center of Franklin Street.
Elev. = 246.11

