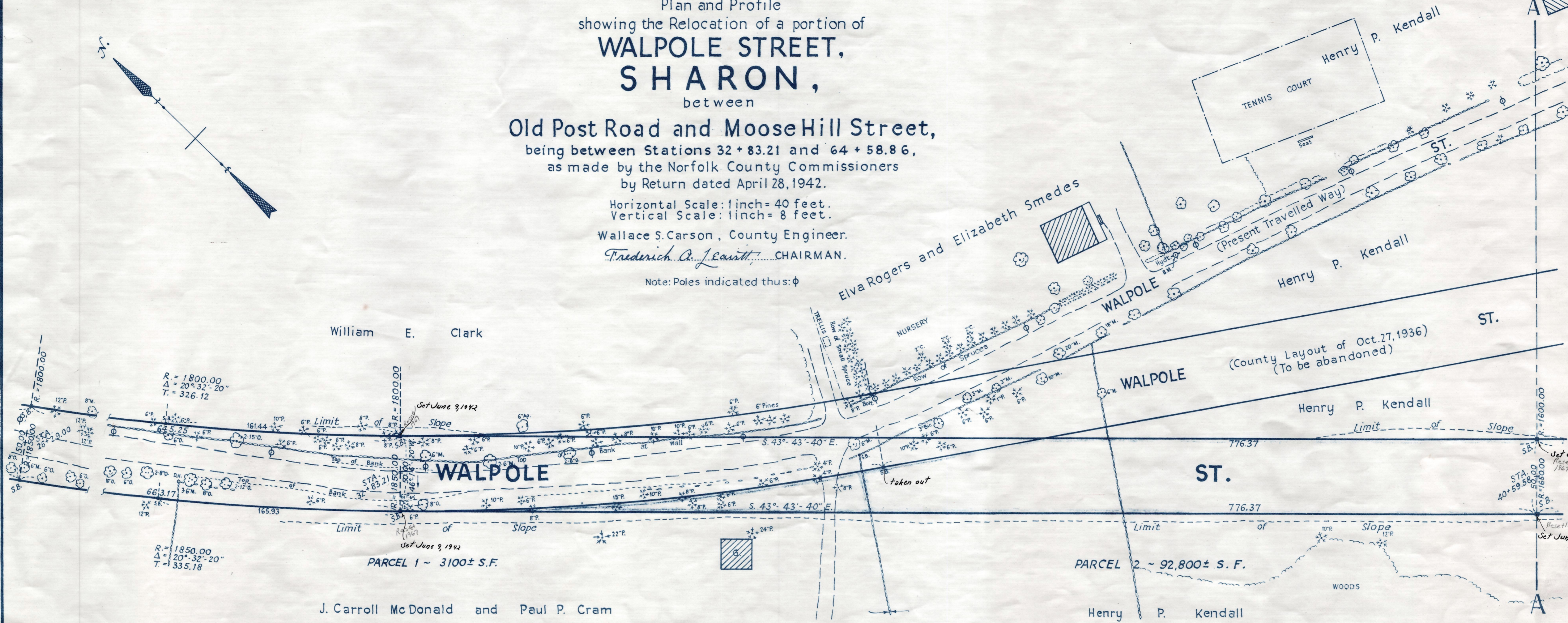
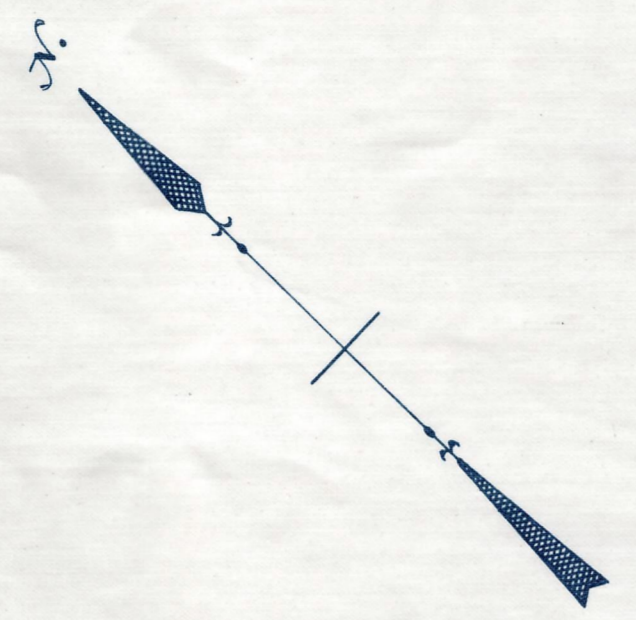


Plan and Profile
showing the Relocation of a portion of
WALPOLE STREET,
SHARON,
between
Old Post Road and Moose Hill Street,
being between Stations 32 + 83.21 and 64 + 58.86,
as made by the Norfolk County Commissioners
by Return dated April 28, 1942.

Horizontal Scale: 1 inch = 40 feet.
Vertical Scale: 1 inch = 8 feet.

Wallace S. Carson, County Engineer.
Frederick A. Leavitt, CHAIRMAN.

Note: Poles indicated thus: ϕ



Bench Mark: - U.S. Coast and Geodetic and State Survey Bound No. 2897, a chiselled square on the highest point of a large boulder lying between two oak trees and about 18 feet northeast of a stone wall corner. Sta. 30+67±, 27 feet left. Elev. = 314.45

B.M. - Hydt. at Sta. 38+13±
148 feet left. Elev. = 305.72