

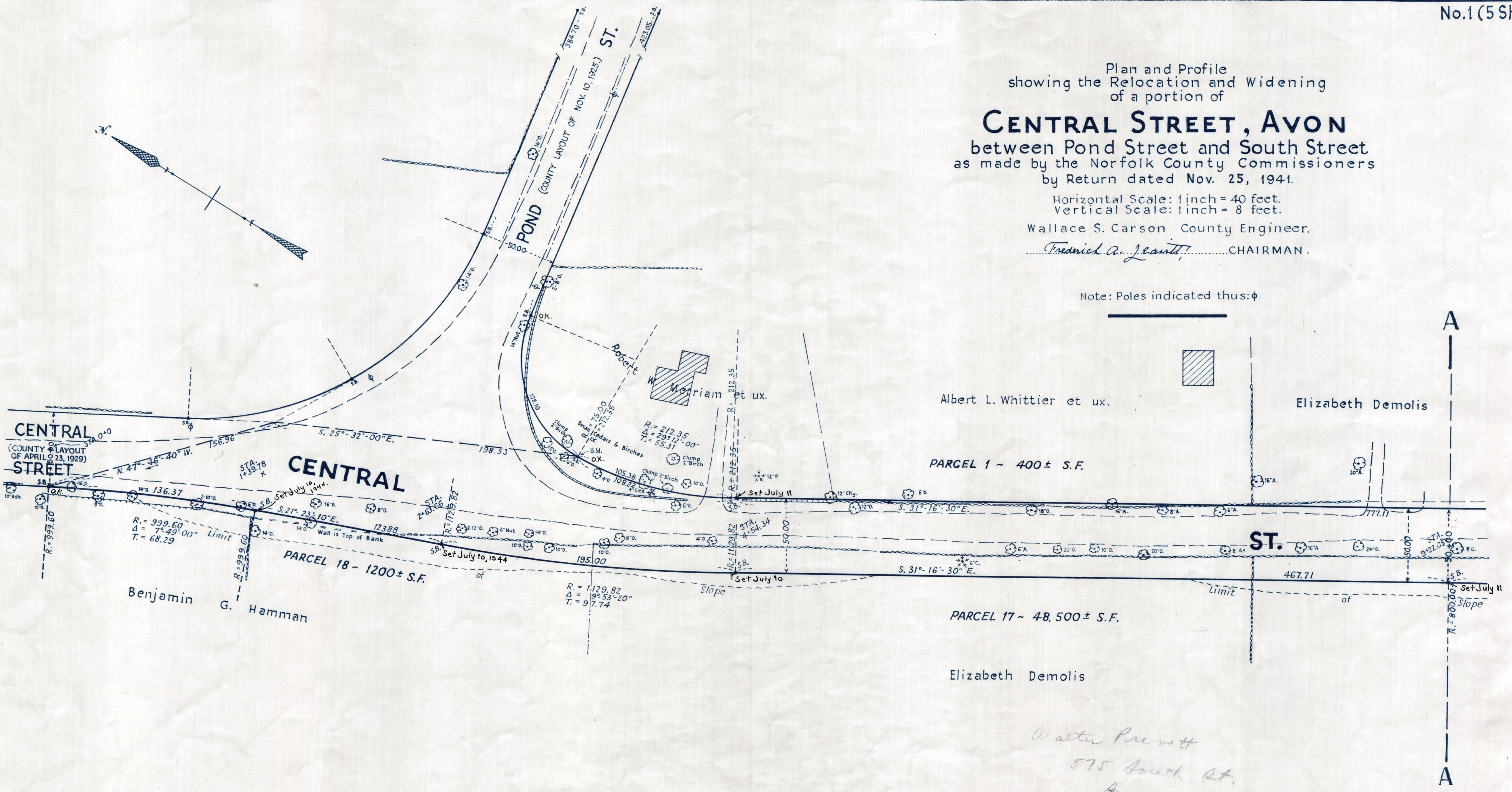
Plan and Profile
showing the Relocation and Widening
of a portion of
CENTRAL STREET, AVON
between Pond Street and South Street
as made by the Norfolk County Commissioners
by Return dated Nov. 25, 1941.

Horizontal Scale: 1 inch = 40 feet.
Vertical Scale: 1 inch = 8 feet.

Wallace S. Carson County Engineer.

Fredrick A. Jeantl CHAIRMAN.

Note: Poles indicated thus: ϕ



Walter Bennett
575 South St.
Avon

