

Plan and Profile
of a portion of
NAHATAN STREET
from
PLEASANT STREET
to
NEPONSET STREET,
NORWOOD

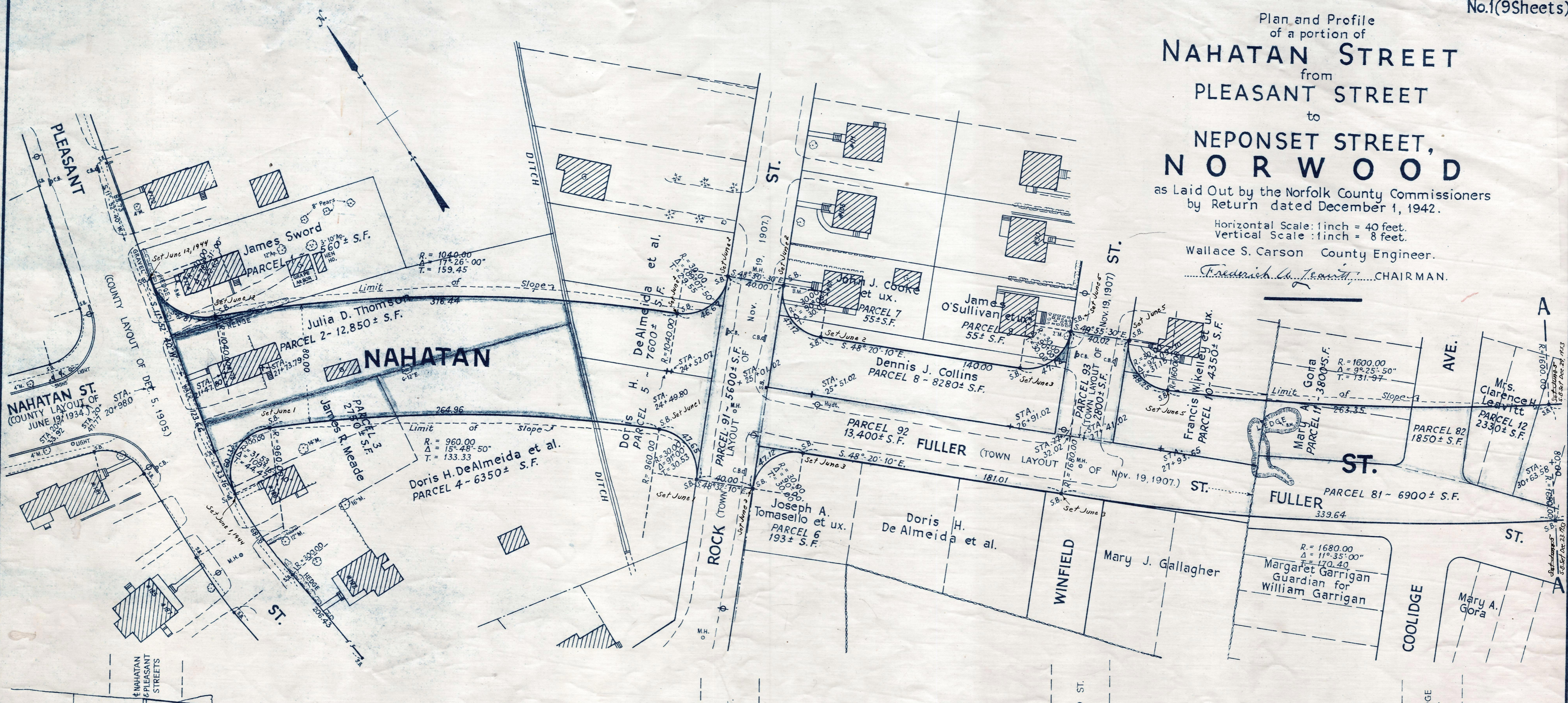
as Laid Out by the Norfolk County Commissioners
by Return dated December 1, 1942.

Horizontal Scale: 1 inch = 40 feet.
Vertical Scale: 1 inch = 8 feet.

Wallace S. Carson County Engineer.

Fredrick W. Leavitt CHAIRMAN.

Note: Poles indicated thus ϕ



Bench Mark:
A U.S. Coast & Geodetic and State Survey
Bound No. M. 1 B. located on the easterly
side of the Boston and Providence Turnpike
at Station 117+38.08 and being a M.H.B.
at the P.C. of the 3040.00 ft. radius curve
Elev. = 85.84

B.M. - Right outer corner lower conc. step
of conc. walk to House No. 174 on Pleasant
Street. Elev. = 113.54

B.M. - Right outer corner lower brick
capped step to House No. 101 on
Rock Street. Elev. = 110.31

B.M. - Drill Hole in Ledge Sta 28+75±
25 ft. left. Elev. = 114.72

Station	Present	Grade	Surface
20+50	114.30		
+98-21	113.51		
	113.57		
22	109.79		
	112.76		
22	110.59		
	111.96		
23	108.7		
	111.15		
23	106.8		
	110.35		
24	106.1		
	109.54		
24	105.72		
	108.72		
25	106.1		
	107.93		
25	107.07		
	107.1		
26	107.0		
	107.31		
26	107.4		
	107.52		
27	107.6		
	107.73		
27	108.0		
	107.94		
28	108.0		
	108.7		
28	108.2		
	108.43		
29	109.7		
	108.71		
29	111.6		
	108.99		
29	111.6		
	108.27		
30	111.0		
	108.55		
30	110.9		
	108.83		