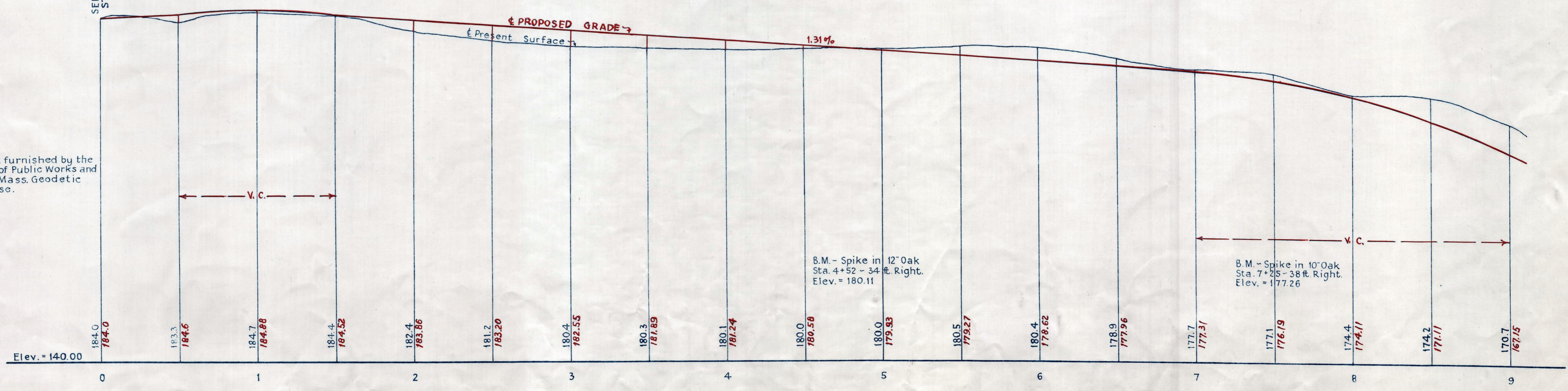
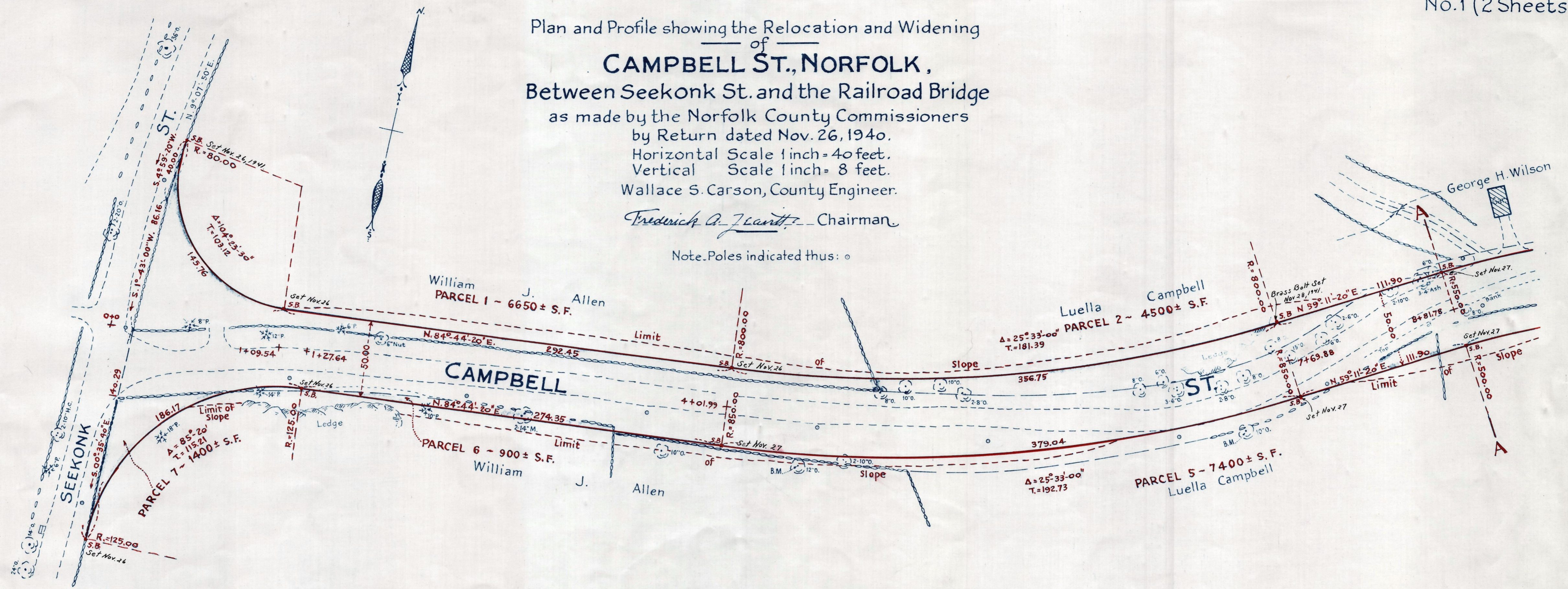


Plan and Profile showing the Relocation and Widening
of
CAMPBELL ST., NORFOLK,
Between Seekonk St. and the Railroad Bridge
as made by the Norfolk County Commissioners
by Return dated Nov. 26, 1940.
Horizontal Scale 1 inch = 40 feet.
Vertical Scale 1 inch = 8 feet.
Wallace S. Carson, County Engineer.
Frederick A. J. Landt - Chairman

Note: Poles indicated thus: ○



Bench Mark furnished by the Mass. Dept. of Public Works and are on the Mass. Geodetic Survey Base.