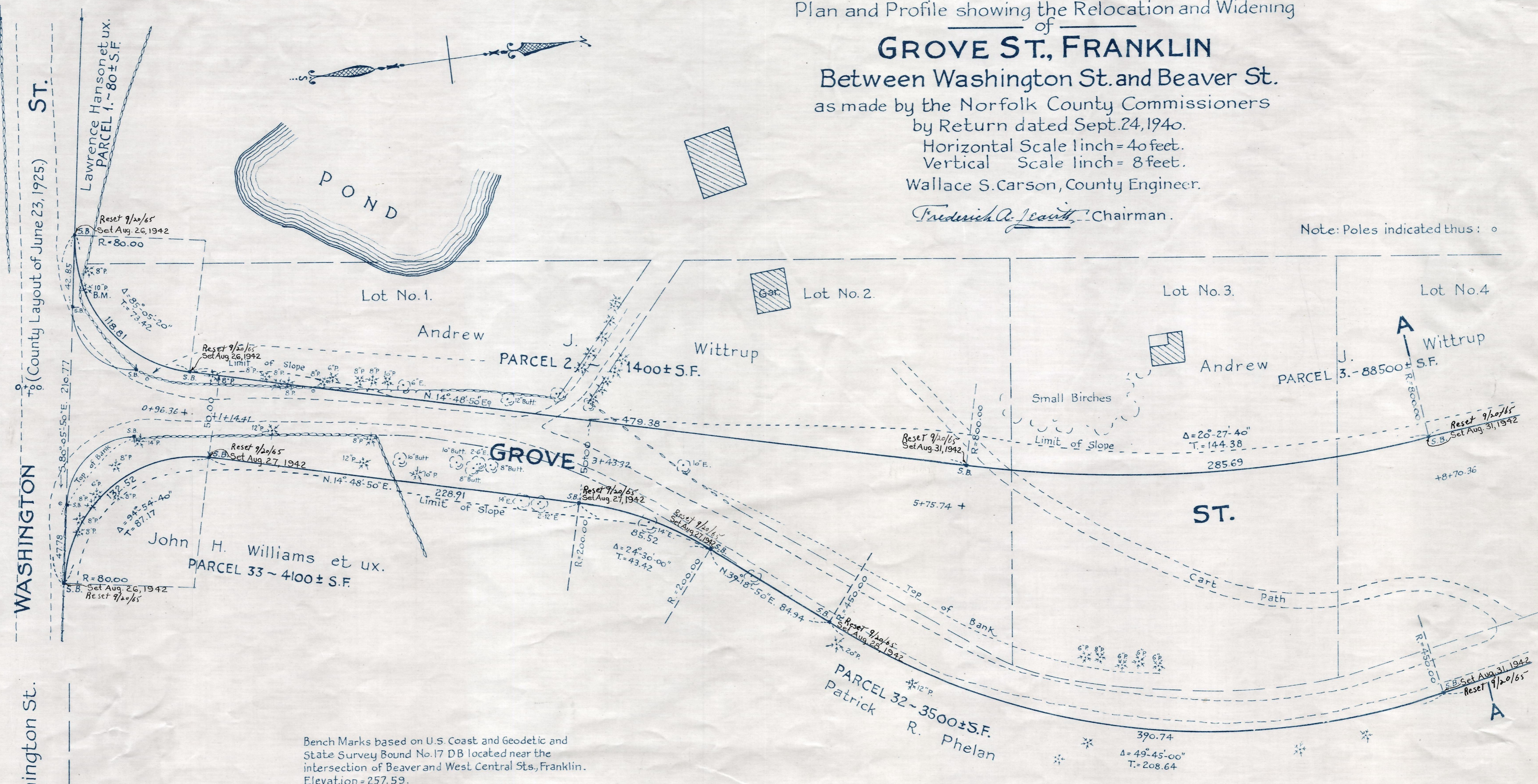
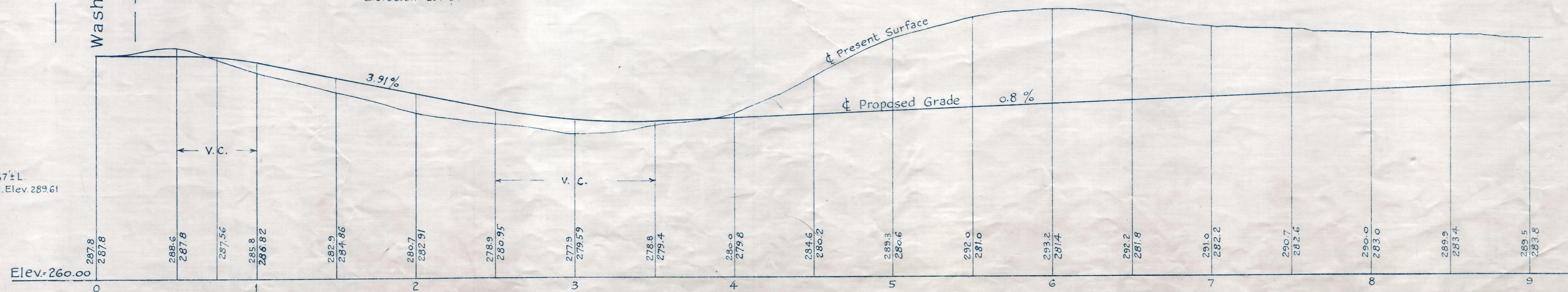


Plan and Profile showing the Relocation and Widening
of
GROVE ST., FRANKLIN
Between Washington St. and Beaver St.
as made by the Norfolk County Commissioners
by Return dated Sept. 24, 1940.
Horizontal Scale 1 inch = 40 feet.
Vertical Scale 1 inch = 8 feet.
Wallace S. Carson, County Engineer.
Fredrick A. South, Chairman.

Note: Poles indicated thus: ○



Bench Marks based on U.S. Coast and Geodetic and State Survey Bound No. 17 DB located near the intersection of Beaver and West Central Sts., Franklin. Elevation = 257.59.



B.M. O+27 ± 67 ± L.
Spike in 10" Pine. Elev. 289.61