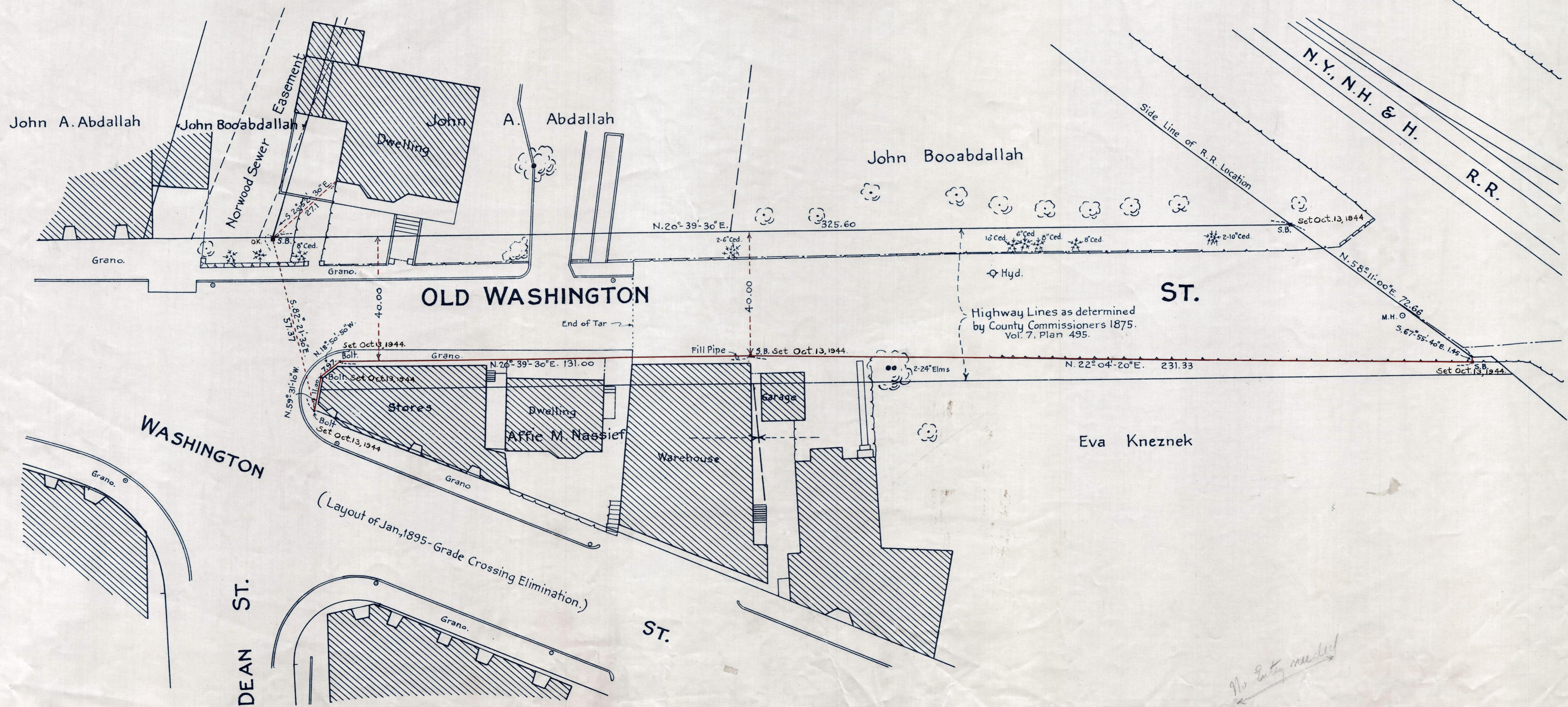
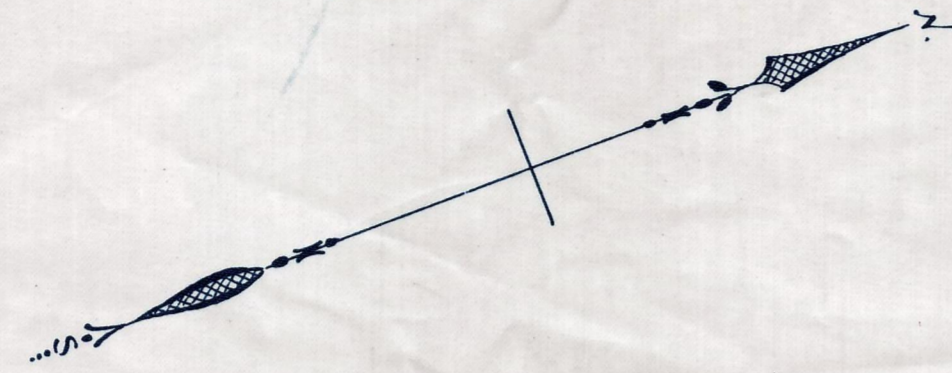


Plan showing the Relocation  
of  
**OLD WASHINGTON ST., NORWOOD**

from  
Washington St. to the N.Y., N.H. & H. R.R.  
as made by the Norfolk County Commissioners  
by Return dated Dec. 19, 1939  
Hartley L. White, County Engineer. Scale 1 inch = 20 feet.

*Frederick A. Leavitt* Chairman.



Note - Poles indicated thus: ○