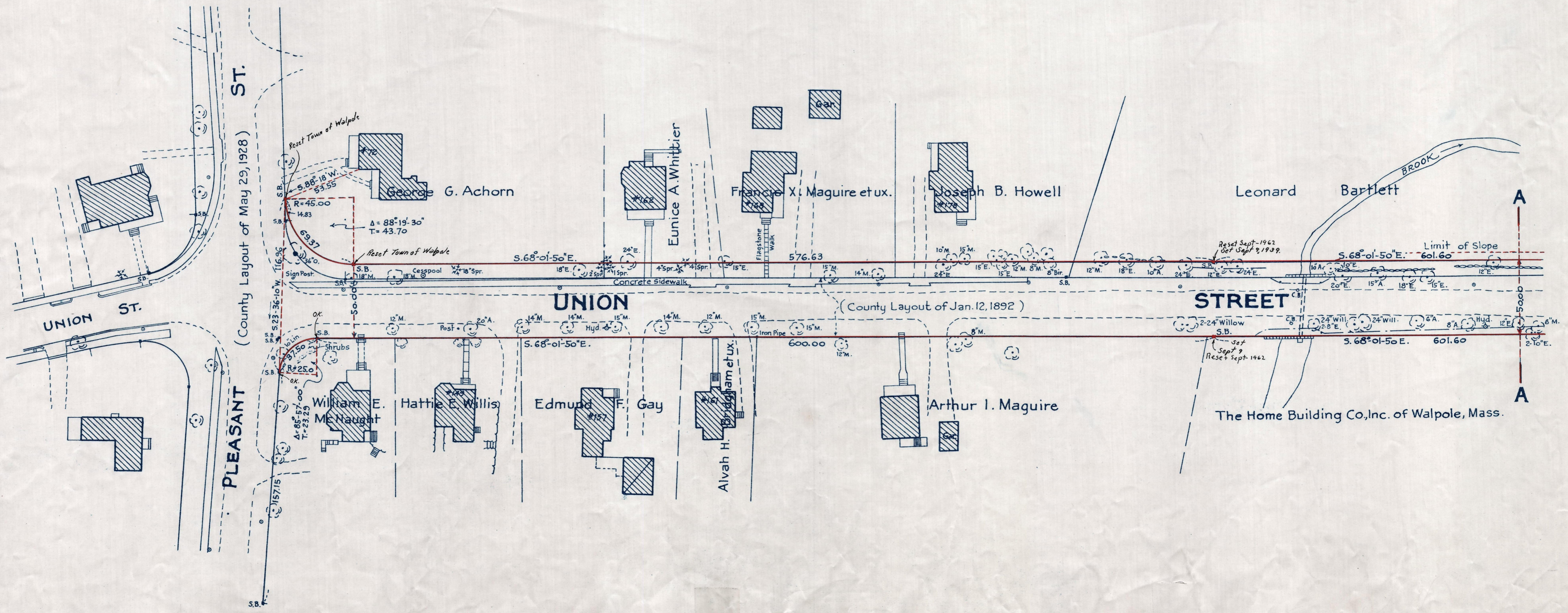
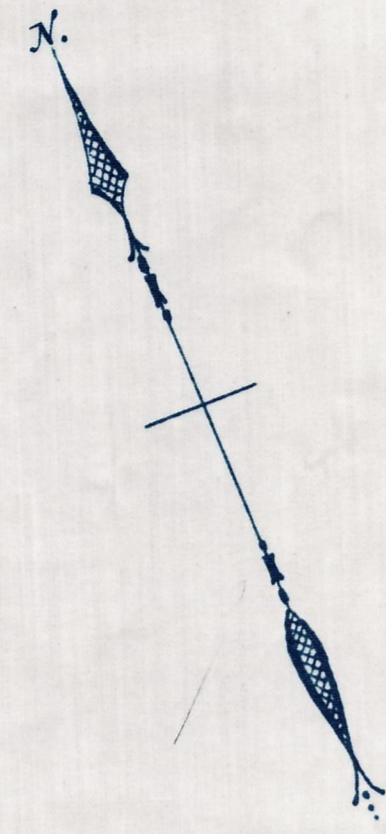


Plan showing the Relocation and Widening
of
UNION STREET
in the towns of
WALPOLE AND NORWOOD
between
Pleasant St. and the Providence Pike,
as made by the Norfolk County Commissioners
by Return dated July 25, 1939.

Hartley L. White, County Engineer. Scale 1 inch = 40 feet.

Frederick A. Leavitt, Chairman.



Note. Poles indicated thus: ○