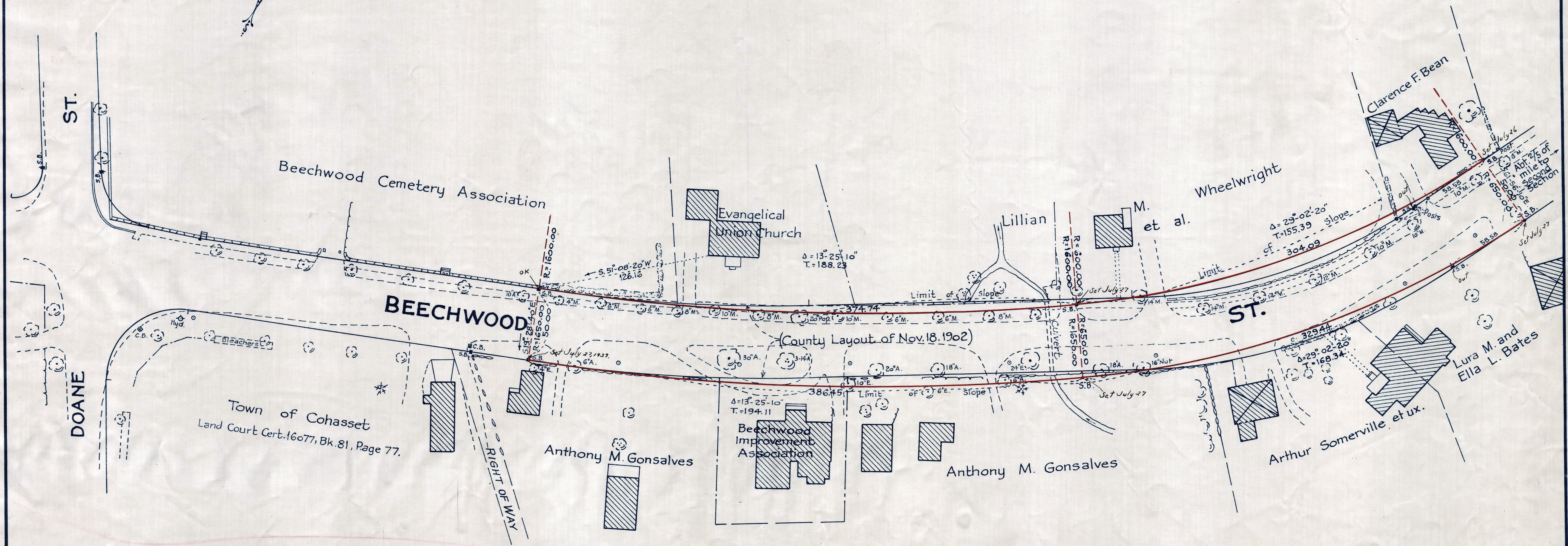
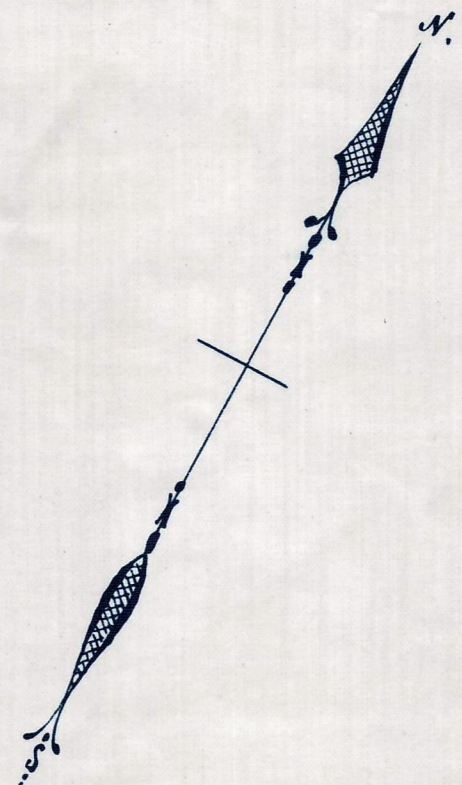


Plan showing the Relocation
of
BEECHWOOD ST., COHASSET
— in sundry places between —
Doane St. and the N.Y., N.H. & H. R.R.
as made by the Norfolk County Commissioners
by Return dated May 16, 1939.

Hartley L. White, County Engineer. Scale 1 inch = 40 feet.

Frederick A. Zeanah Chairman.



Note. Poles indicated thus: o