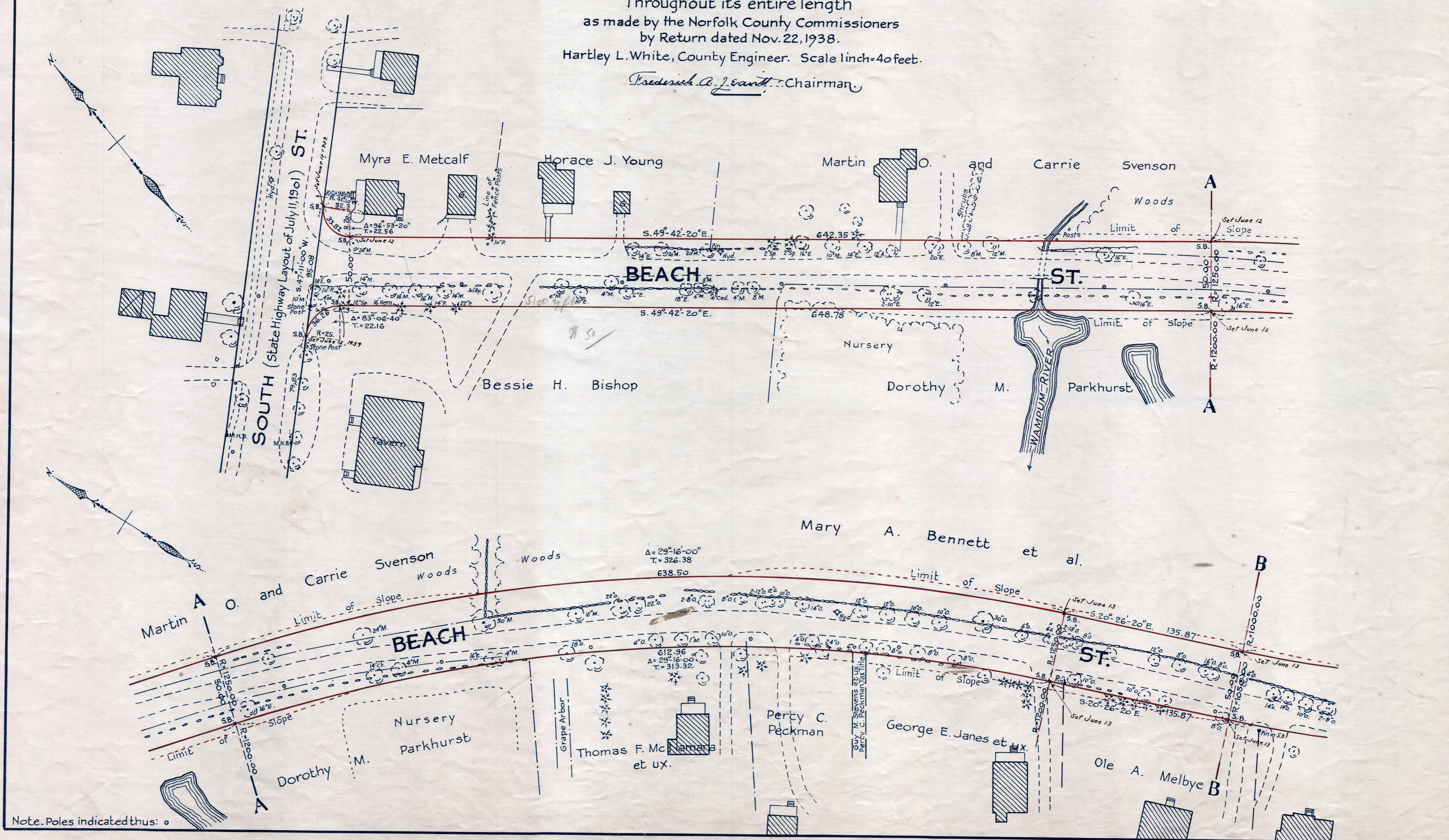


Plan showing the Relocation and Widening
of
BEACH ST., WRENTHAM
Throughout its entire length
as made by the Norfolk County Commissioners
by Return dated Nov. 22, 1938.
Hartley L. White, County Engineer. Scale 1inch=40 feet.

Fredrick A. J. Smith Chairman



Note. Poles indicated thus: ○

Date of Entry April 3, 1939.