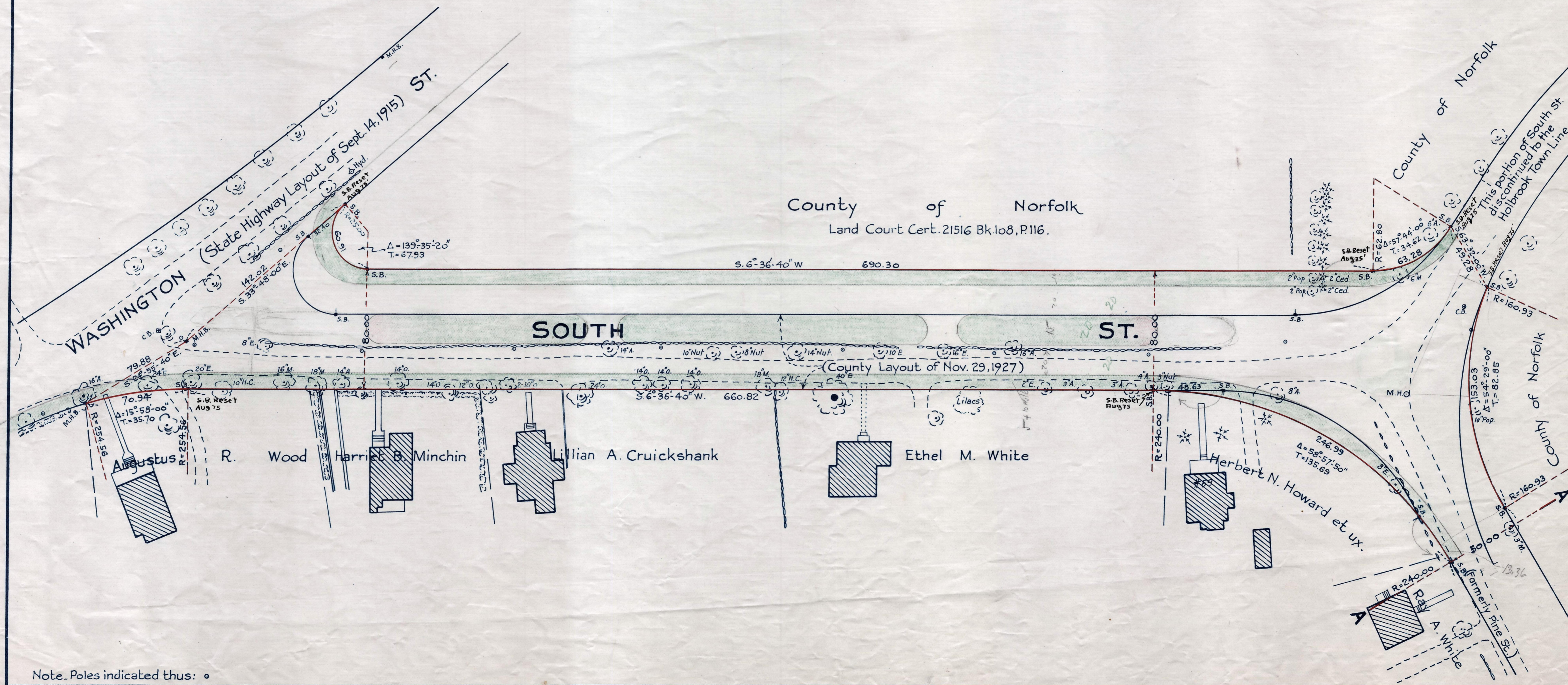
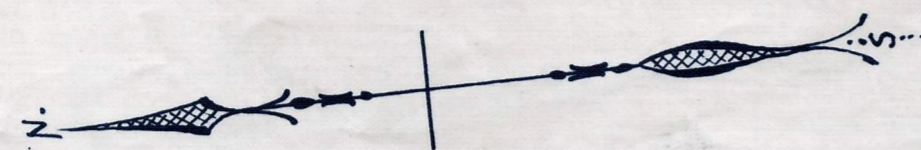


Plan showing the Relocation and Widening  
 of  
**SOUTH ST., BRAINTREE**  
 between  
 Washington St. and the Holbrook Town Line  
 and the Discontinuance of a portion of South St.  
 from Pine St. to the Holbrook Town Line  
 as made by the Norfolk County Commissioners  
 by Return dated Dec. 13, 1938.

Hartley L. White, County Engineer. Scale 1 inch = 40 feet.

*Fredrick A. J. Smith*, Chairman



EASE

Date of Record 12-21-1938