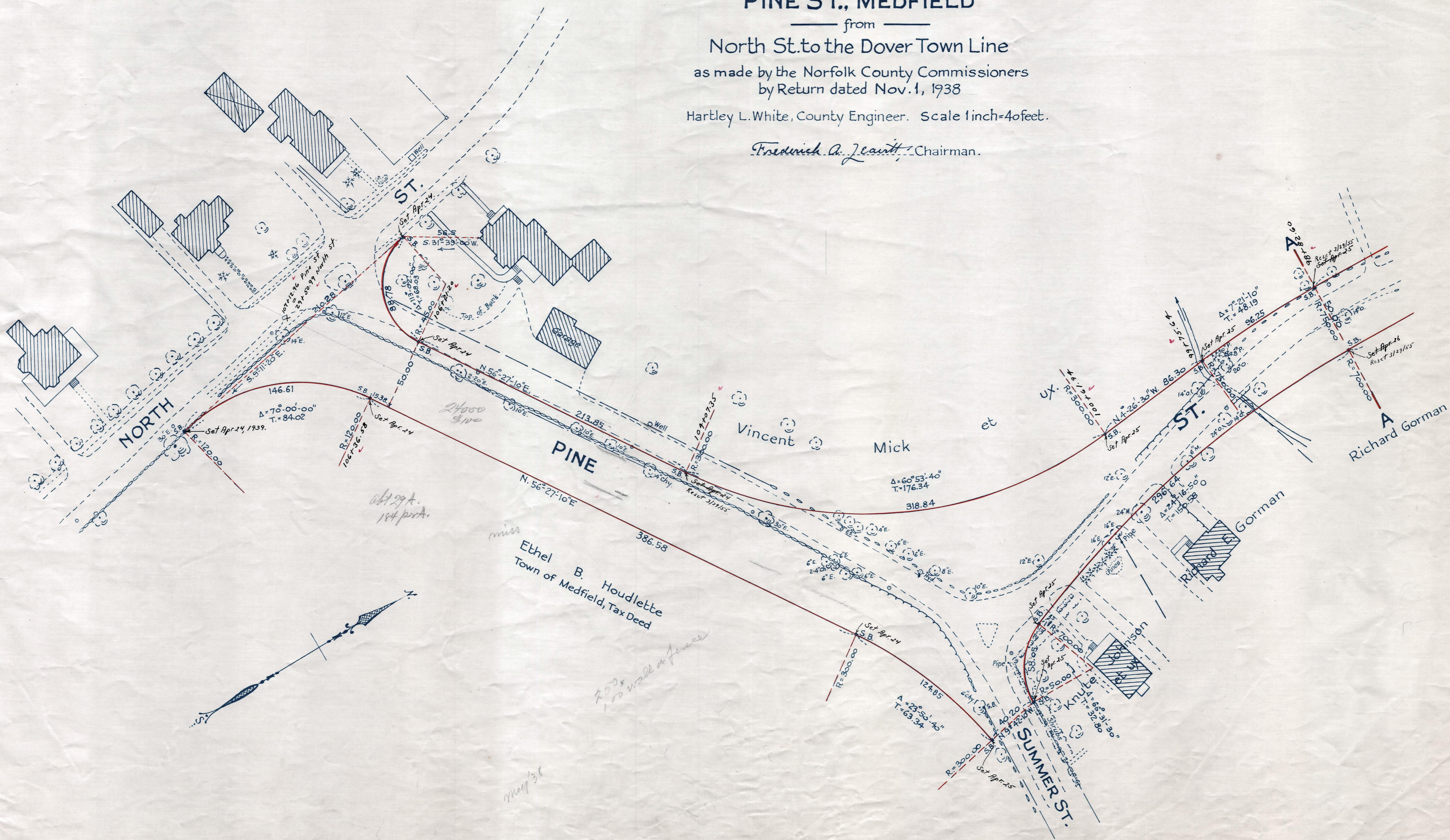


Plan showing the Relocation and Widening  
 of  
**PINE ST., MEDFIELD**  
 from  
 North St. to the Dover Town Line  
 as made by the Norfolk County Commissioners  
 by Return dated Nov. 1, 1938  
 Hartley L. White, County Engineer. Scale 1 inch=40 feet.

*Fredrick A. Leavitt*, Chairman.



Note. Poles indicated thus: ○