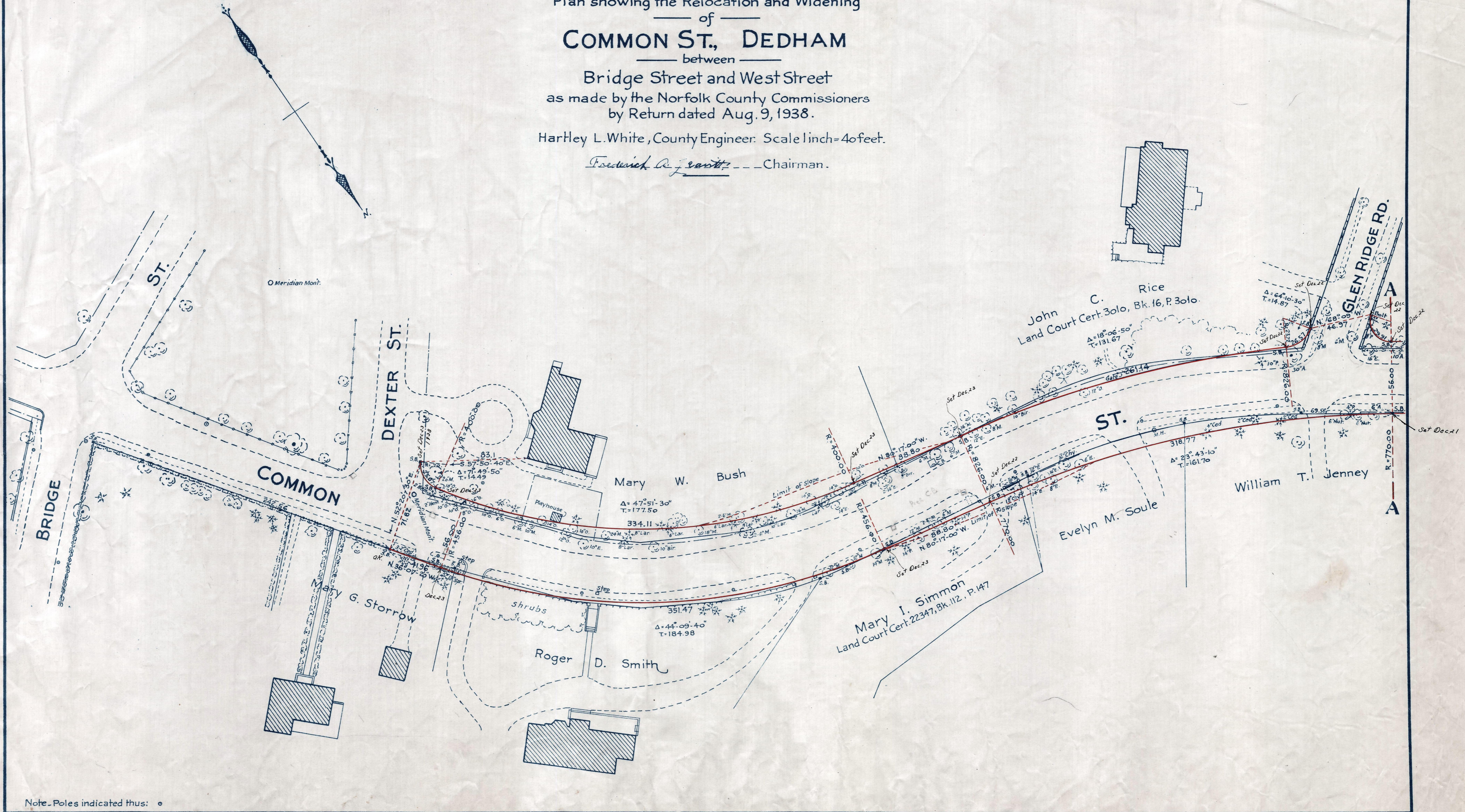


Plan showing the Relocation and Widening
of
COMMON ST., DEDHAM
between

Bridge Street and West Street
as made by the Norfolk County Commissioners
by Return dated Aug. 9, 1938.

Hartley L. White, County Engineer. Scale 1 inch=40 feet.

Frederick A. Jewett --- Chairman.



Note. Poles indicated thus: •