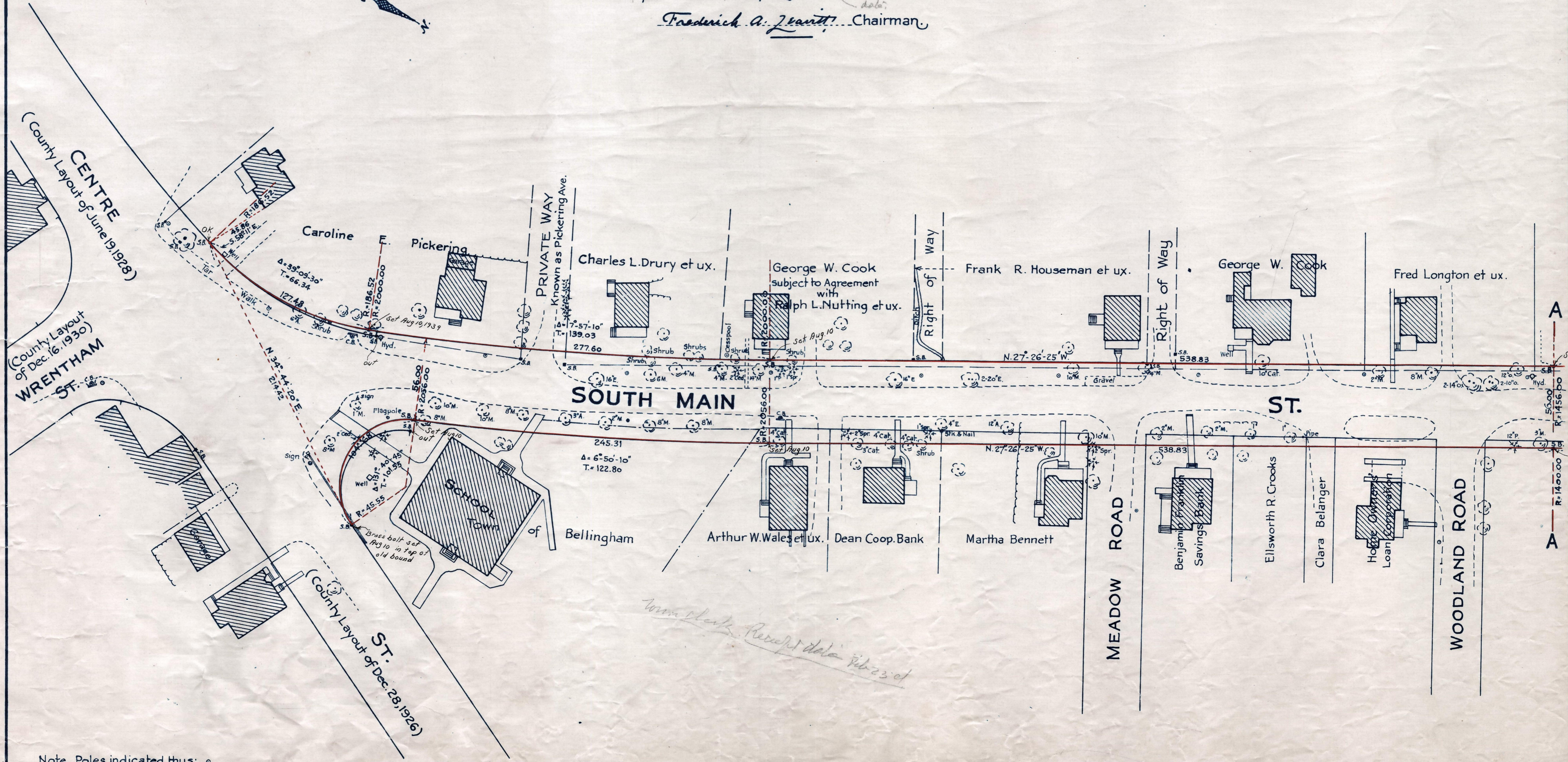
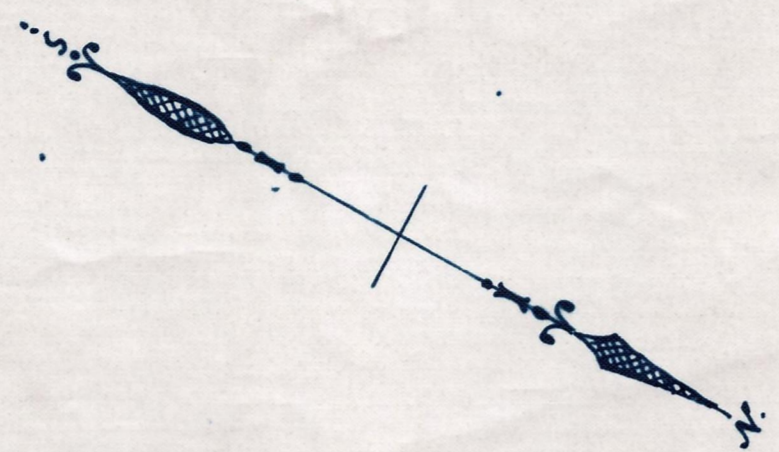


Plan showing the Relocation and Widening
of a portion of
SOUTH MAIN ST., BELLINGHAM
between
Centre St. and Chestnut St.

as made by the Norfolk County Commissioners
by Return dated Jan 24, 1939.

Hartley L. White, County Engineer. Scale 1 inch = 40 feet.

Frederick A. Jantitt, Chairman.



Note. Poles indicated thus: o