

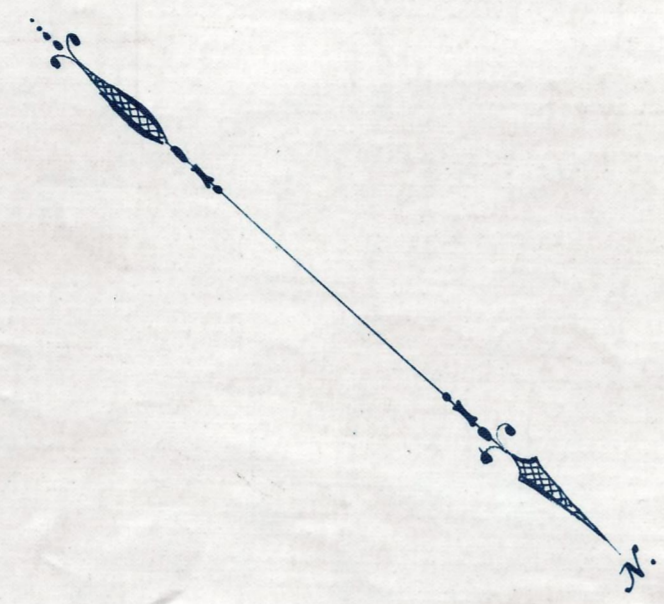
Plan showing the Relocation and Widening
of
WINTER ST., WRENTHAM

between
East St. and Dedham St.

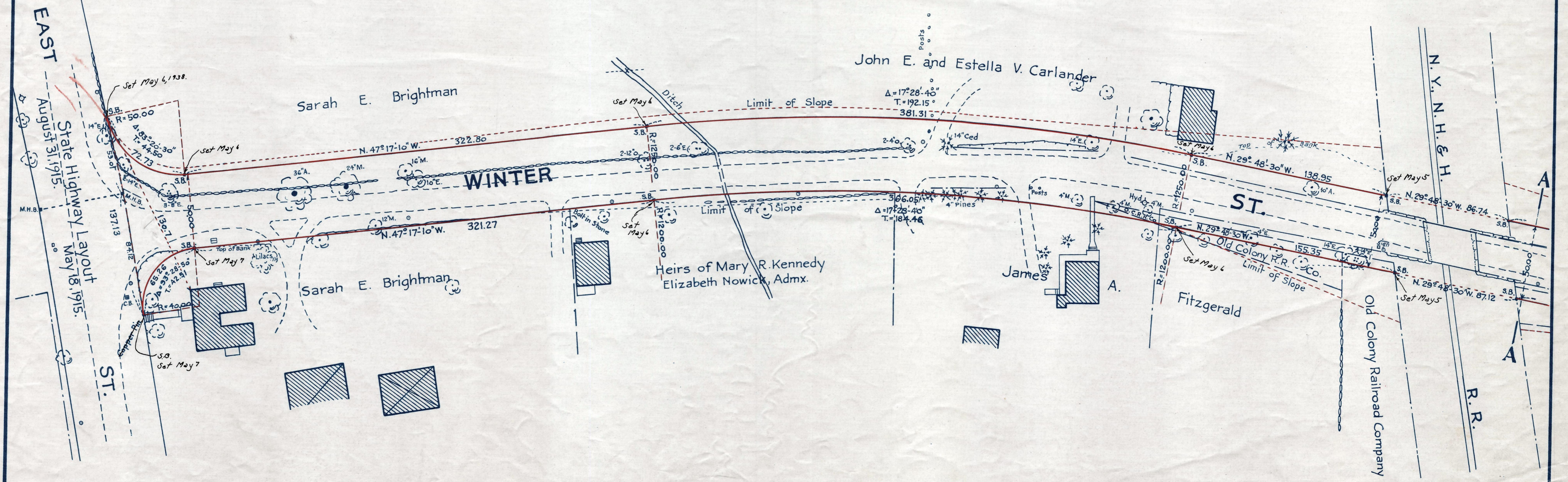
as made by the Norfolk County Commissioners
by Return dated April 20, 1938.

Hartley L. White, County Engineer. Scale 1 inch = 40 feet.

Frederick A. Leavitt, Chairman.



*521 250
76.1 part
1/4 250 Valley 3 3/4 35.
200*



Note. Poles indicated thus: °

Date of Entry May 11, 1938.
Taking Recorded Bk. 2190 p. 30
P15k. #122 Plans 281 & 282 of 1938 REC. APR. 29, 1938