

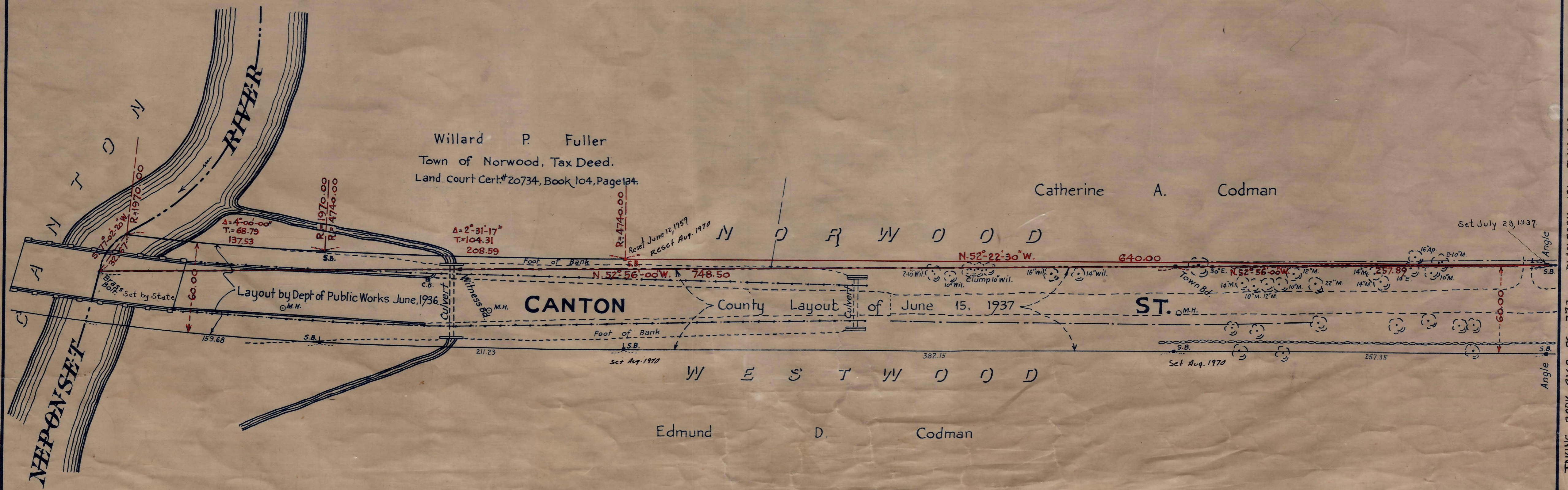
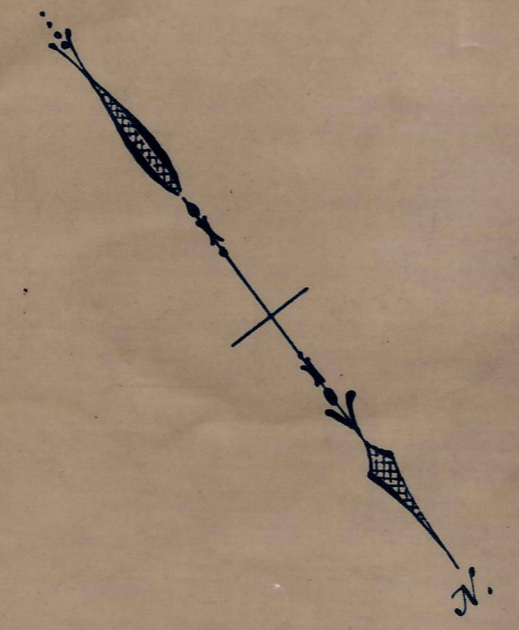
Plan showing the Relocation and Widening of CANTON ST., NORWOOD AT THE WESTWOOD TOWN LINE

between the
Neponset River and a point about 1000ft. Northwestly

As made by the Norfolk County Commissioners
by Return dated Dec. 21, 1937.

Hartley L. White, County Engineer. Scale 1 inch = 40 feet.

Frederick A. Leavitt, Chairman.



TAKING BOOK 2168, PG. 373 ; PLAN BOOK 121, PLAN 819 ; RECORDED DEC. 23, 1937

Date of Entry