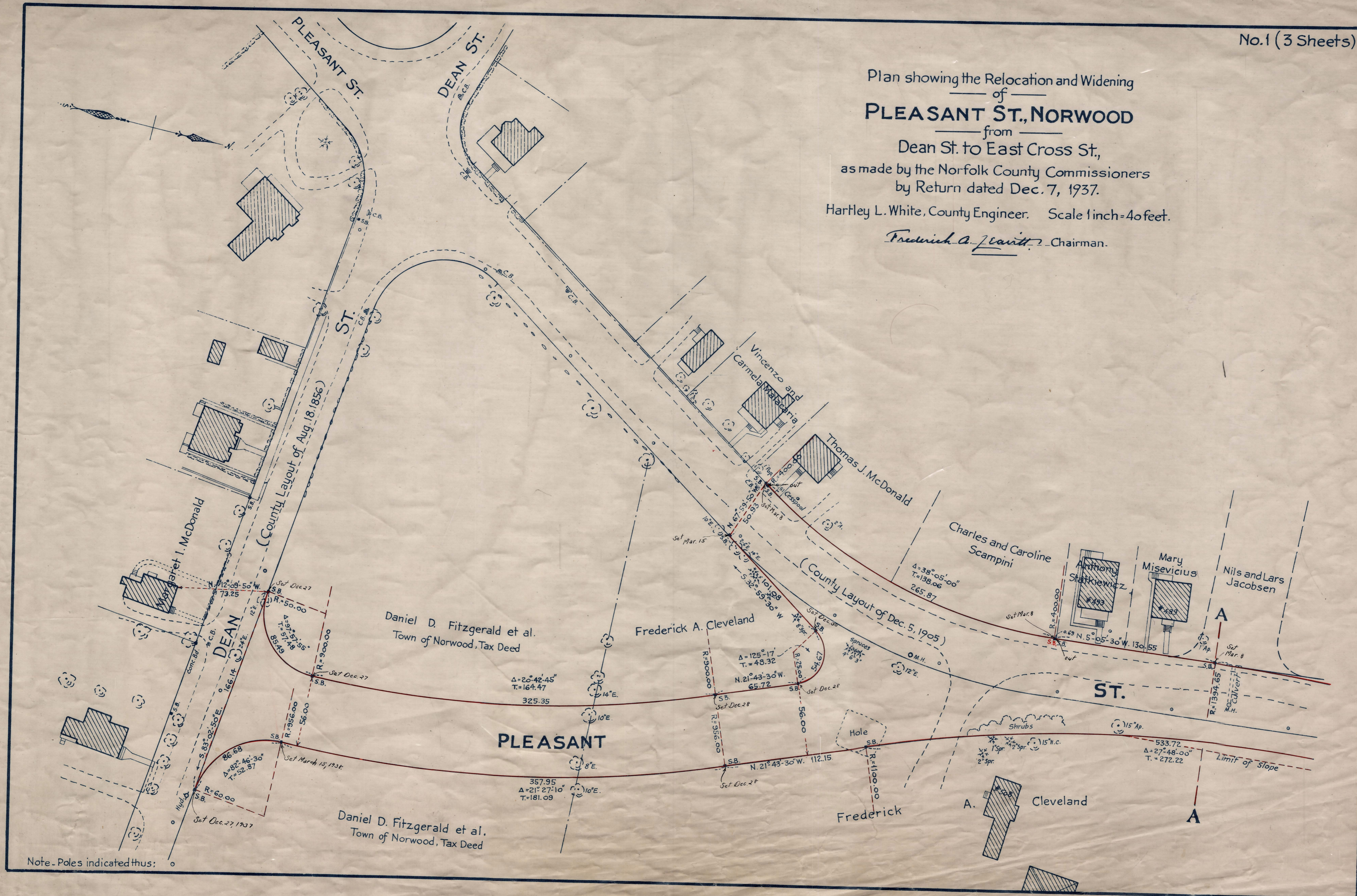


Plan showing the Relocation and Widening
of
PLEASANT ST., NORWOOD
from

Dean St. to East Cross St.,
as made by the Norfolk County Commissioners
by Return dated Dec. 7, 1937.

Hartley L. White, County Engineer. Scale 1 inch = 40 feet.

Frederick A. Cleveland Chairman.



Note - Poles indicated thus: ○

Date of Entry Feb. 14, 1938.

TAKING BOOK 2166, PAGE 549; PLAN BOOK 122, PLANS 789, 790 & 791 REC. DEC. 14, 1937