

Plan showing the Relocation and Widening
of

WEST ST., MEDWAY

between Beech St. and Main St. and

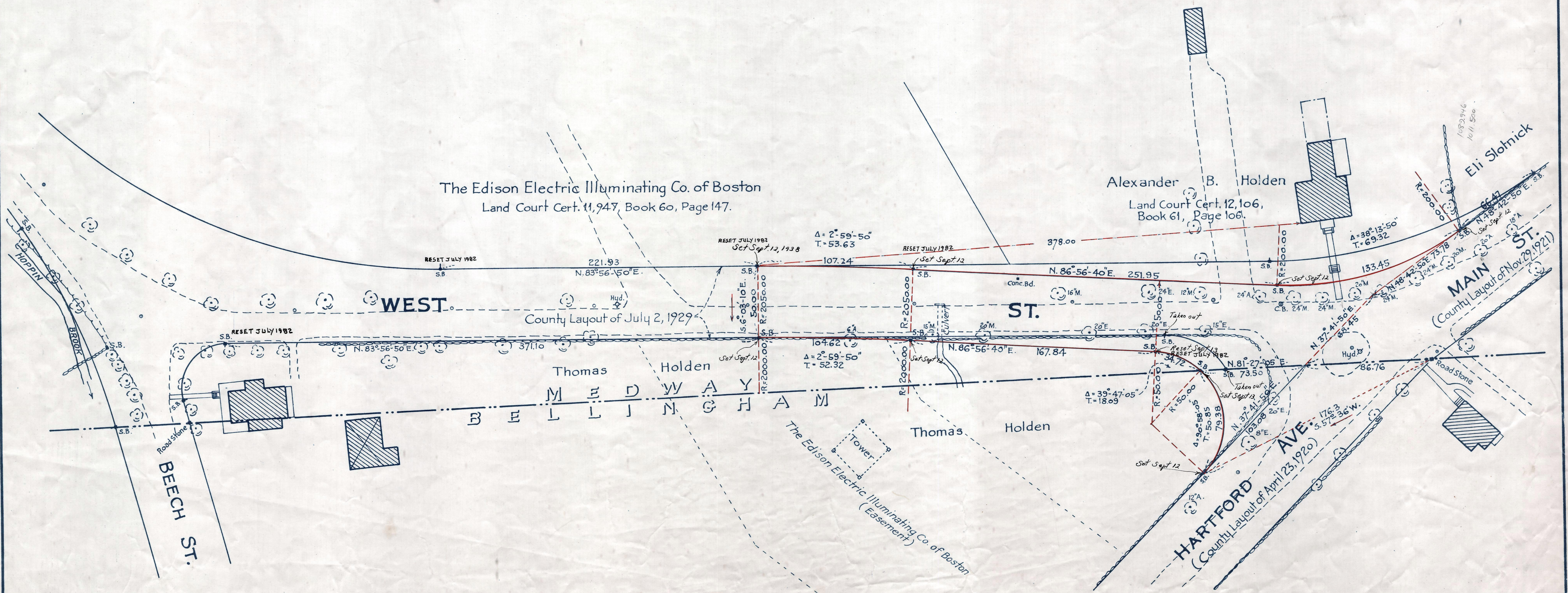
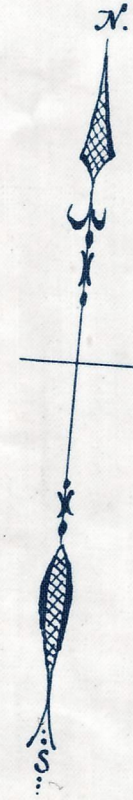
HARTFORD AVE., BELLINGHAM

at the Medway Town Line,

as made by the Norfolk County Commissioners
by Return dated Sept. 28, 1937.

Hartley L. White, County Engineer. Scale 1 inch = 40 feet.

Fredrick A. Jewett Chairman



Note. Poles indicated thus: ○

West St. Date of Entry Aug. 15, 1938.
Hartford Ave. Date of Entry May 18, 1939.

COMPLETE