

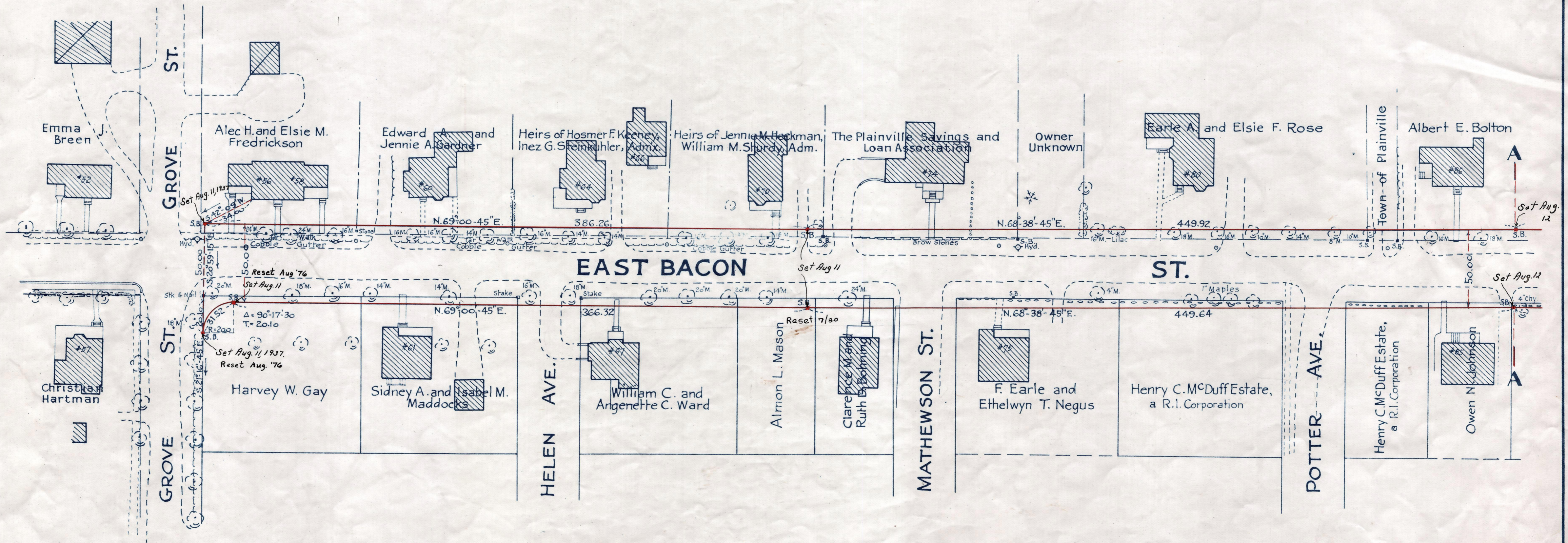
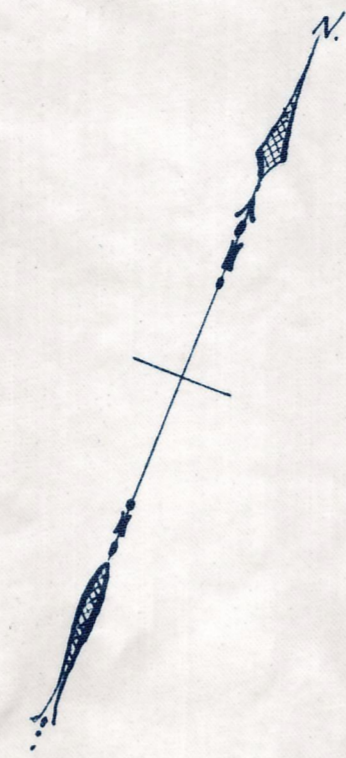
Plan showing the Relocation and Widening
of
EAST BACON ST., PLAINVILLE
between

Grove St. and Washington St.

as made by the Norfolk County Commissioners
by Return dated July 6, 1937.

Hartley L. White, County Engineer. Scale 1 inch = 40 feet.

Frederick A. Jeavitt Chairman.



Note. Poles indicated thus: o