

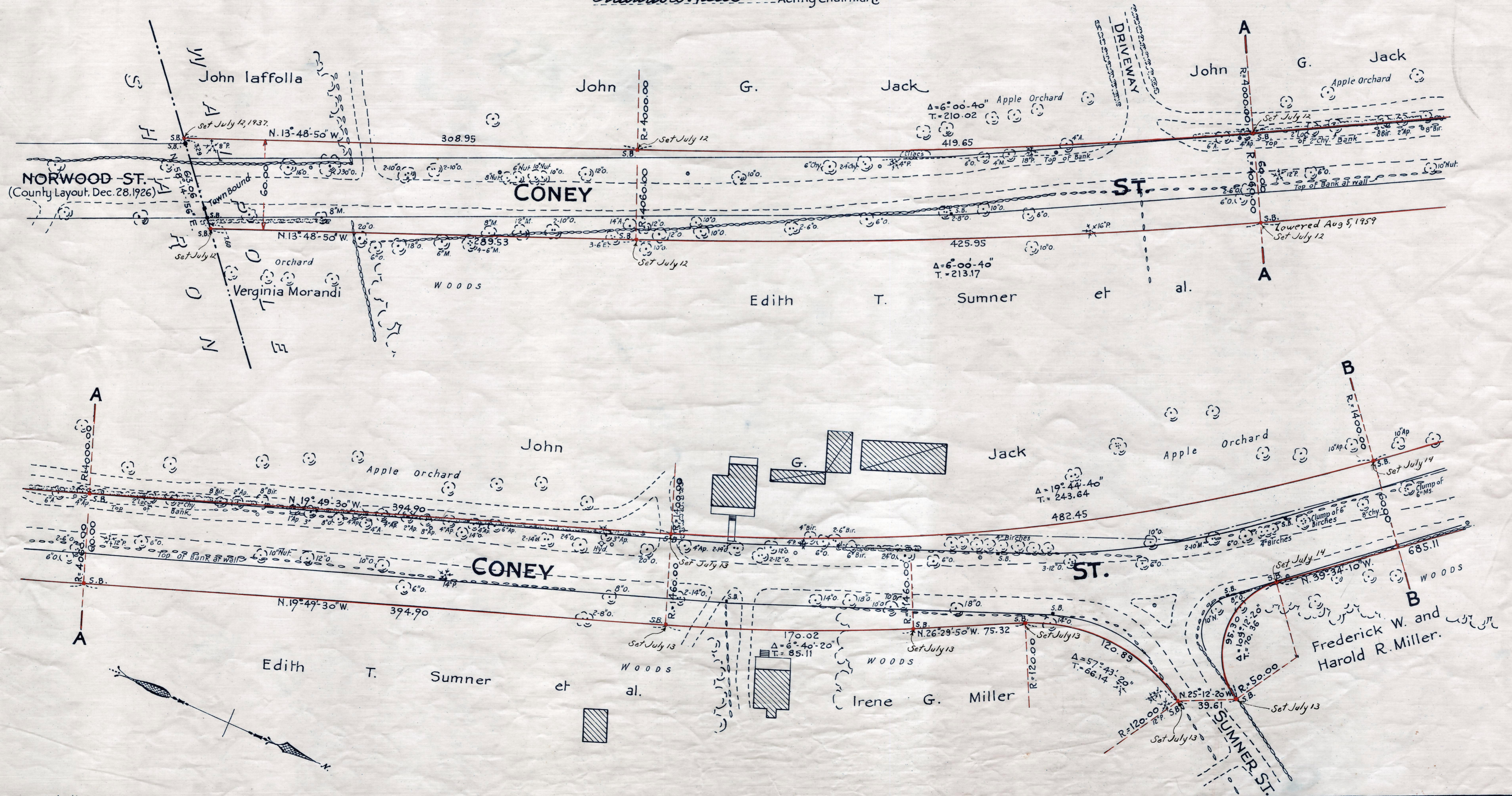
Plan showing the Relocation and Widening of **CONEY STREET, WALPOLE**

from the
Sharon Town Line to Pleasant St.
as made by the Norfolk County Commissioners
by Return dated May 4, 1937.

Hartley L. White, County Engineer. Scale 1 inch = 40 feet.

Edward W. Hunt Acting Chairman

Supple lines 201225



Note: Poles indicated thus: ○

TAKING BOOK 2145 PAGE 497; PLANBOOK 121, PLANS 333 TO 335 INCL.
RECORDED MAY 10, 1937

Date of Entry Oct 20 1937.