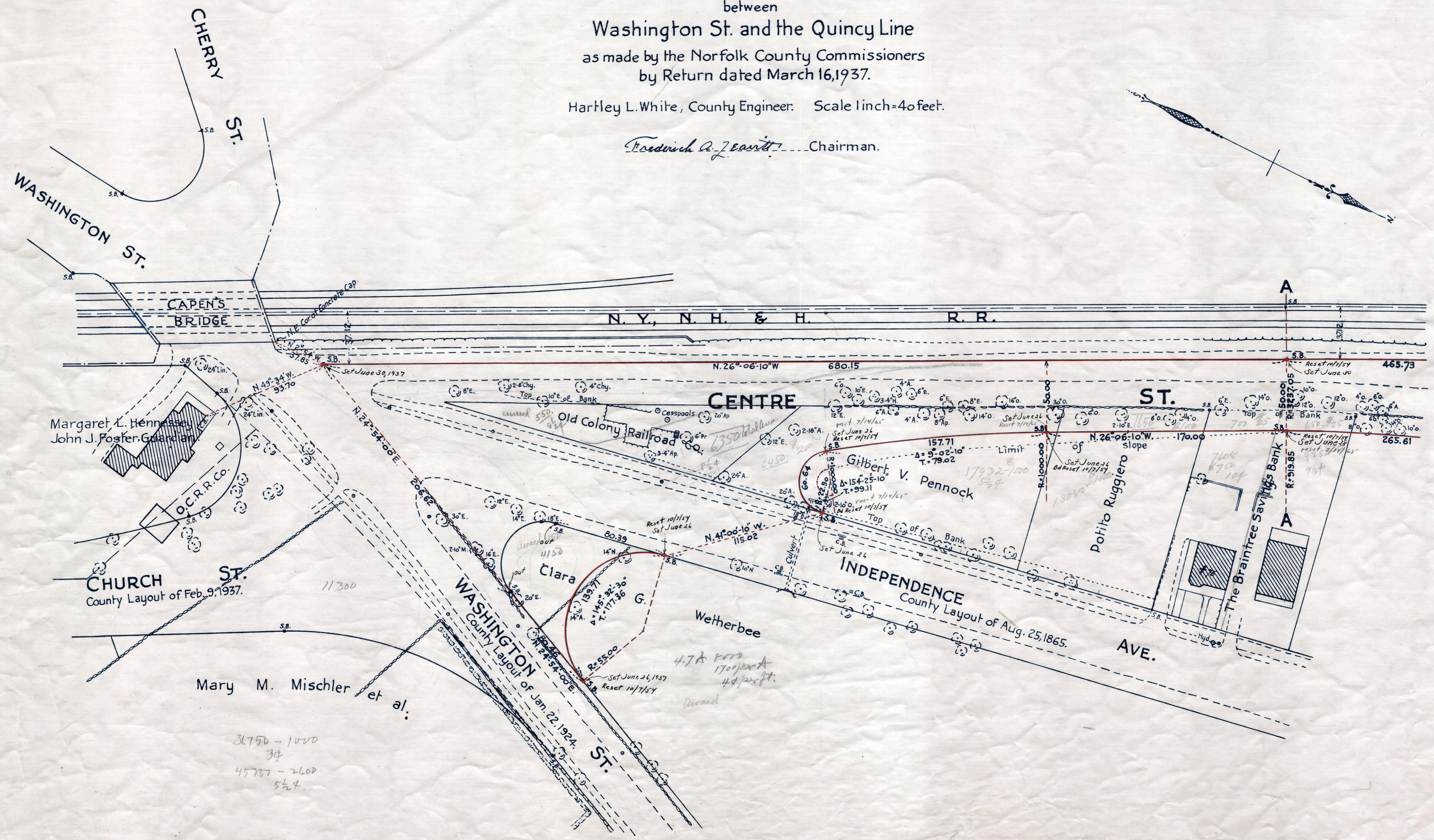
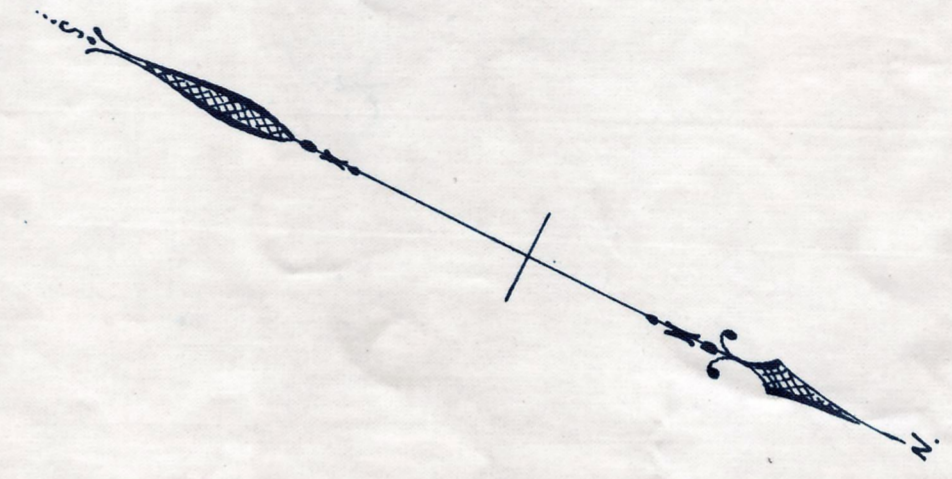


Plan showing the Relocation and Widening of
CENTRE ST., BRAINTREE
between
Washington St. and the Quincy Line
as made by the Norfolk County Commissioners
by Return dated March 16, 1937.

Hartley L. White, County Engineer: Scale 1 inch = 40 feet.

Fredrick A. Zearitt Chairman.



Margaret L. Hennessey
John J. Foster, Guardian

CHURCH ST.
County Layout of Feb. 9, 1937.

Mary M. Mischler et al.

CENTRE ST.

ST.

INDEPENDENCE
County Layout of Aug. 25, 1865.

AVE.

Note. Poles indicated thus: ○

36750 - 1000
34
45787 - 2600
524