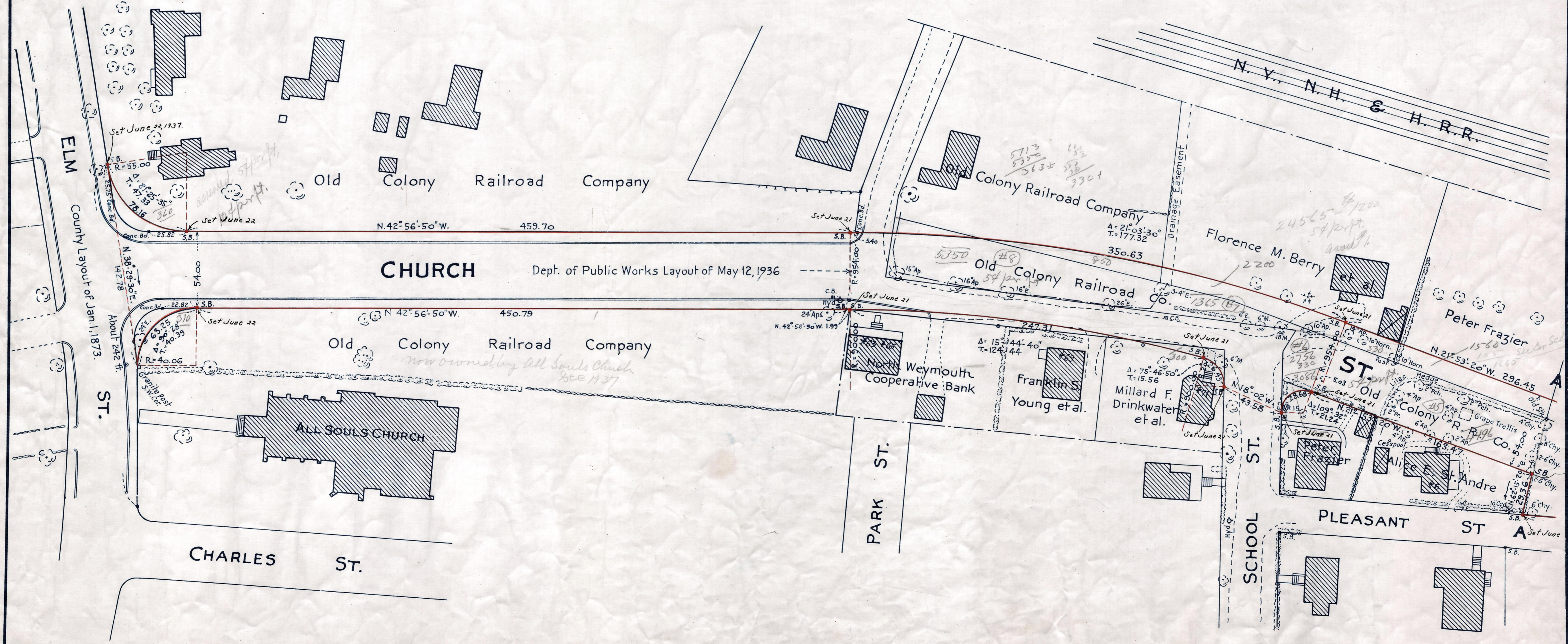
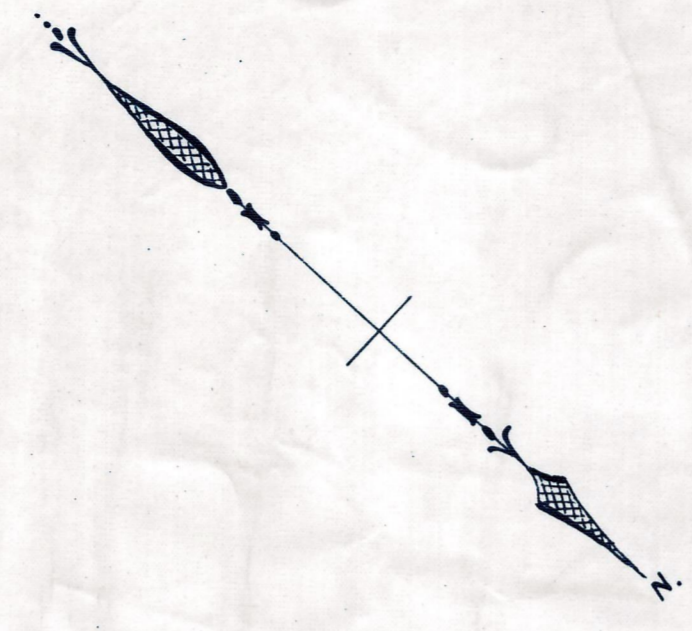


Plan showing the Layout of a New Way
 in the
TOWN OF BRAINTREE
 to be known as
CHURCH STREET
 as made by the Norfolk County Commissioners
 by Return dated Feb. 9, 1937.
 Hartley L. White, County Engineer. Scale 1 inch = 40 feet.
Frederick A. J. Smith, Chairman.



Note: Poles indicated thus: ○

TAKING - 2135 - 321
 P.B. 121-667 of 37
 Rec. Feb. 17, 1937

Date of Entry July 16, 1937.