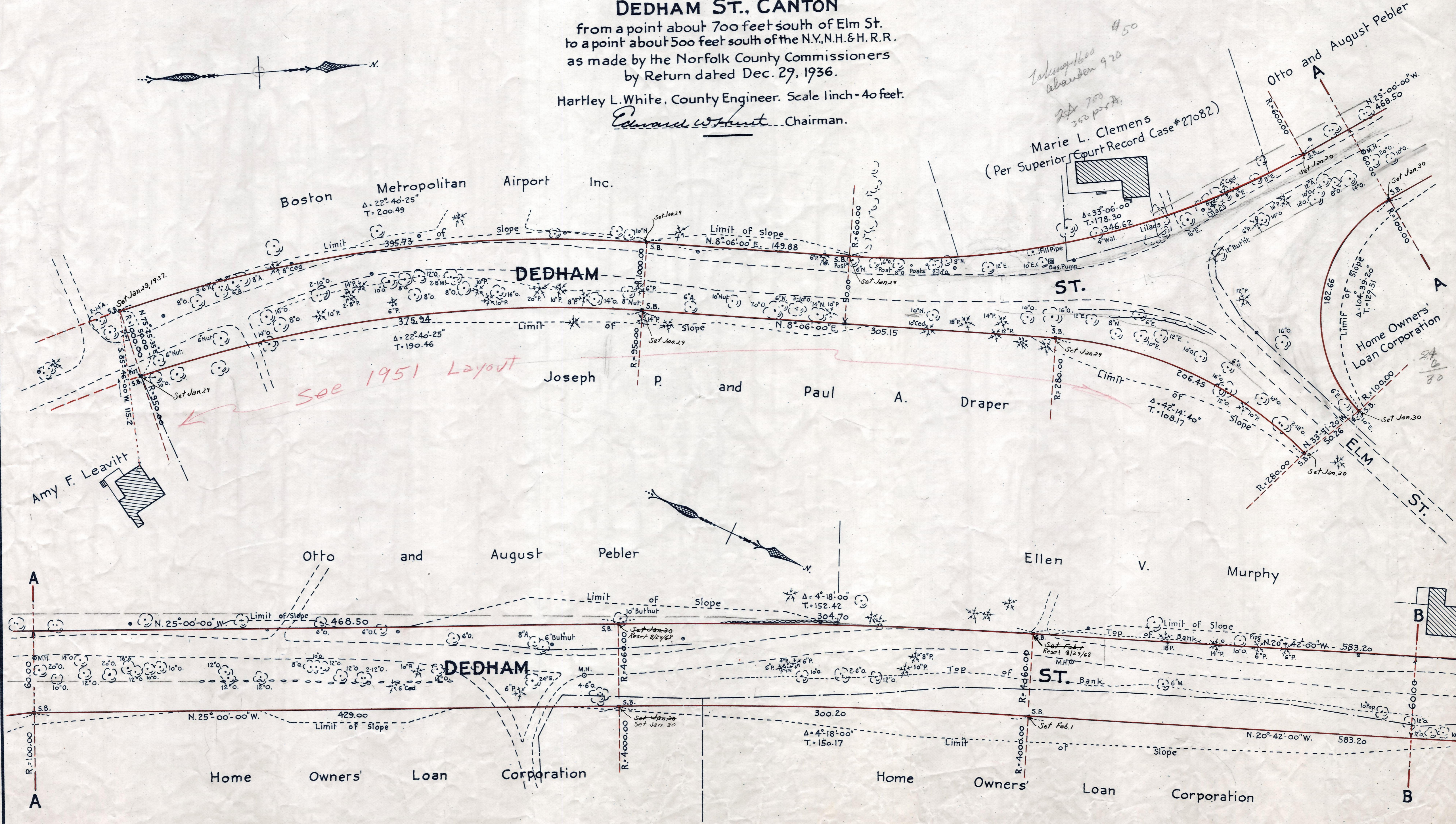
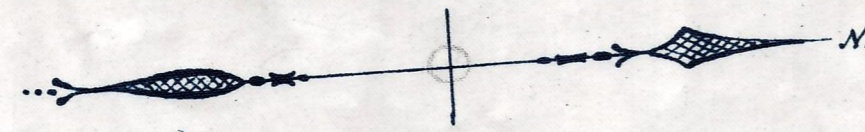


Plan showing the Relocation and Widening of **DEDHAM ST., CANTON** from a point about 700 feet south of Elm St. to a point about 500 feet south of the N.Y., N.H. & H. R. R. as made by the Norfolk County Commissioners by Return dated Dec. 29, 1936.

Hartley L. White, County Engineer. Scale 1 inch = 40 feet.
Edward White, Chairman.



Note - Poles indicated thus: •

Date of Entry Dec. 27, 1938.
TAKING - 2132-146 Rec. Jan. 6, 1937
P.B. 120 #3-4