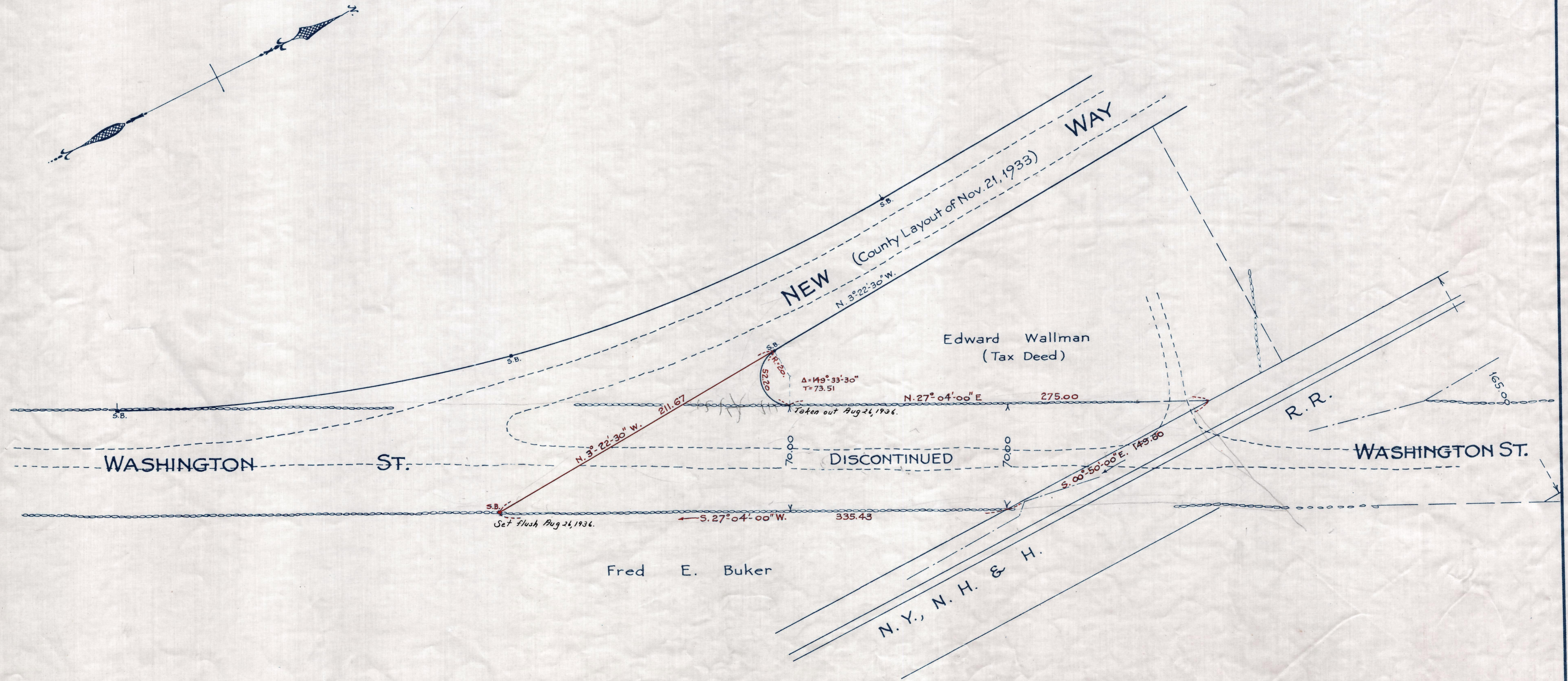


Plan showing Discontinuance
of a portion of
WASHINGTON ST., FOXBOROUGH
as made by the Norfolk County Commissioners
by Return dated Aug. 25, 1936

Hartley L. White, County Engineer. Scale 1 inch = 40 feet.

Edward Wallman Chairman.



Date of Entry

TAKING - 2118-630 Rec. Sept. 3, 1936
P.B. - 120-400