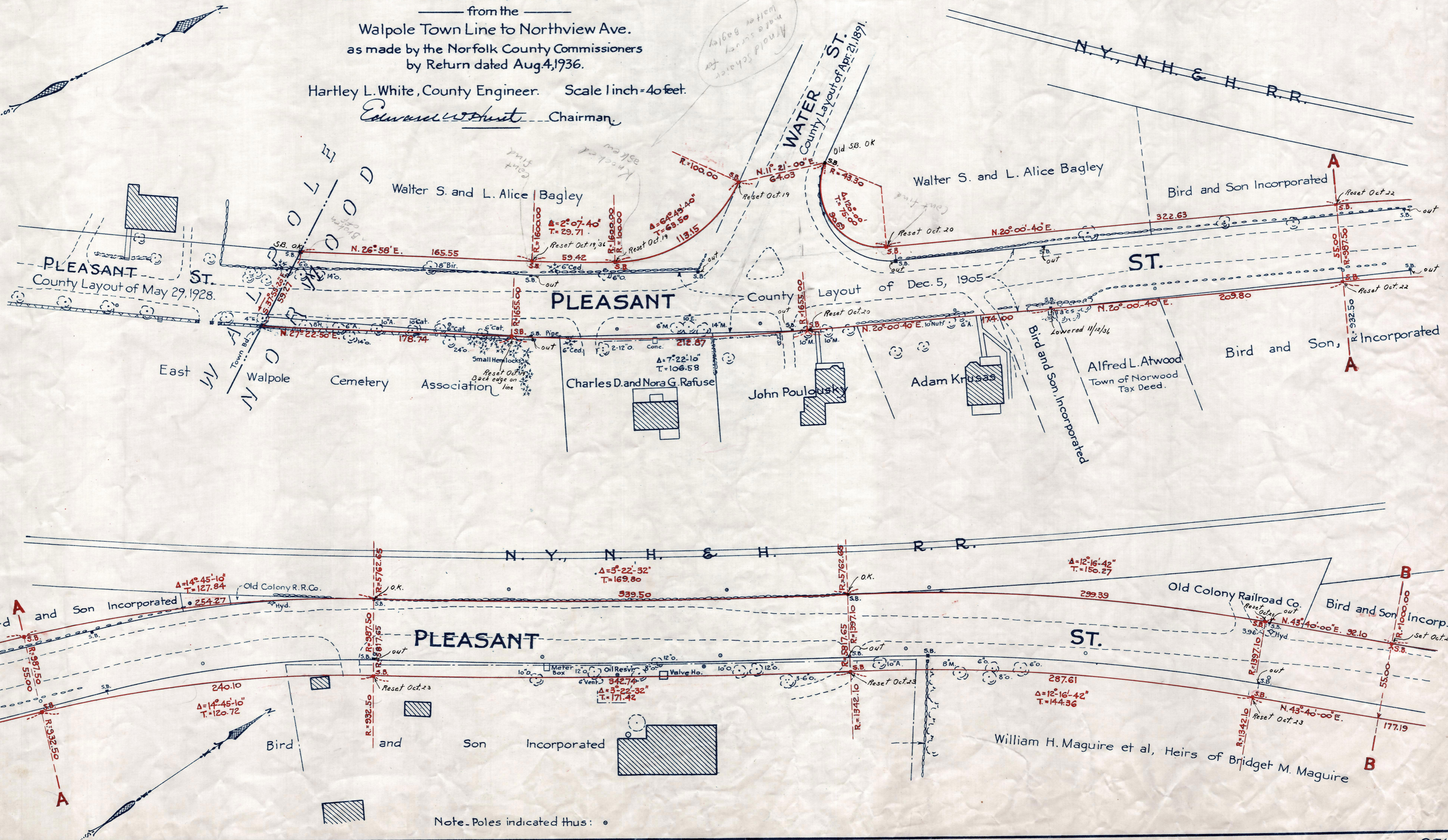
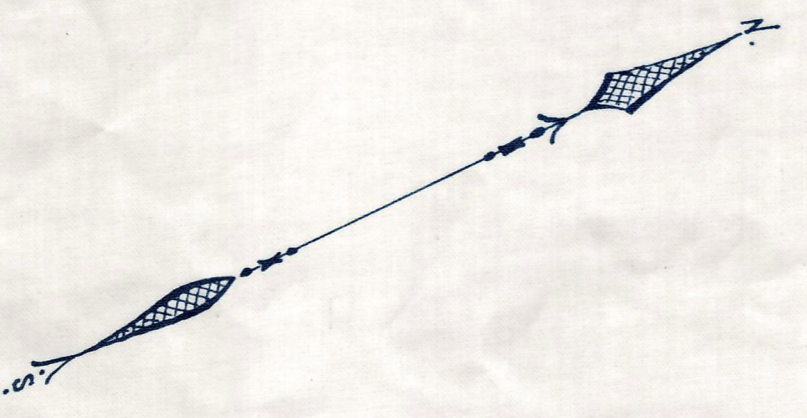


Plan showing the Relocaton and Widening of PLEASANT ST., NORWOOD

from the Walpole Town Line to Northview Ave. as made by the Norfolk County Commissioners by Return dated Aug 4, 1936.

Hartley L. White, County Engineer. Scale 1 inch = 40 feet.

Edward White Chairman



Note. Poles indicated thus:

Date of Entry Dec. 16, 1936.

TAKING - 2116-574
P.B. - 120-377-378
REG. Aug. 12, 1936