

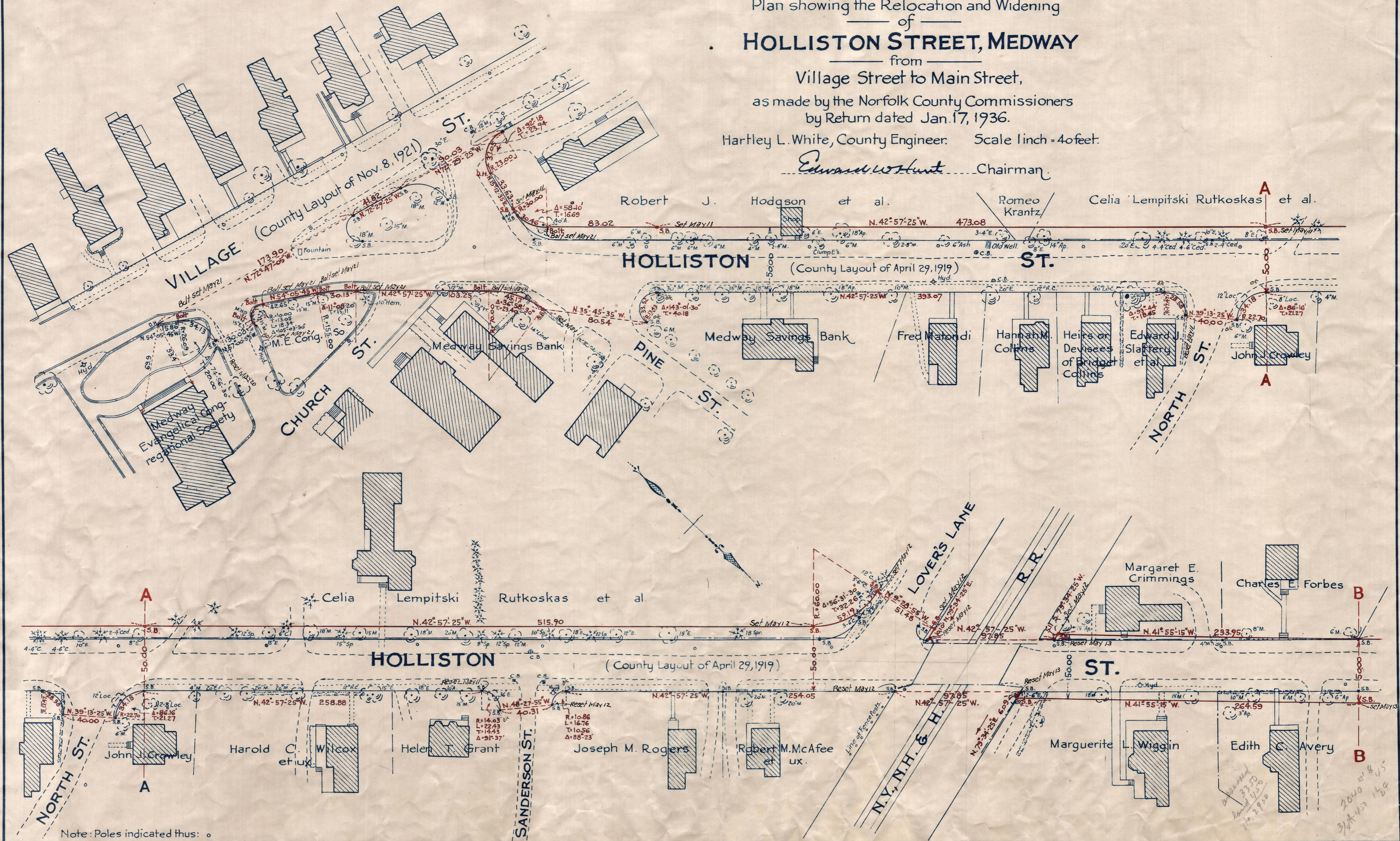
Plan showing the Relocation and Widening of HOLLISTON STREET, MEDWAY

from
Village Street to Main Street,

as made by the Norfolk County Commissioners
by Return dated Jan. 17, 1936.

Hartley L. White, County Engineer. Scale 1 inch = 40 feet.

Edward W. Hunt Chairman



Note: Poles indicated thus: o

Date of Entry Mar. 23, 1936.

3/23/36

TAKING - 2099-9 Recd JAN 30, 1936
P.B. - 120-42-44