

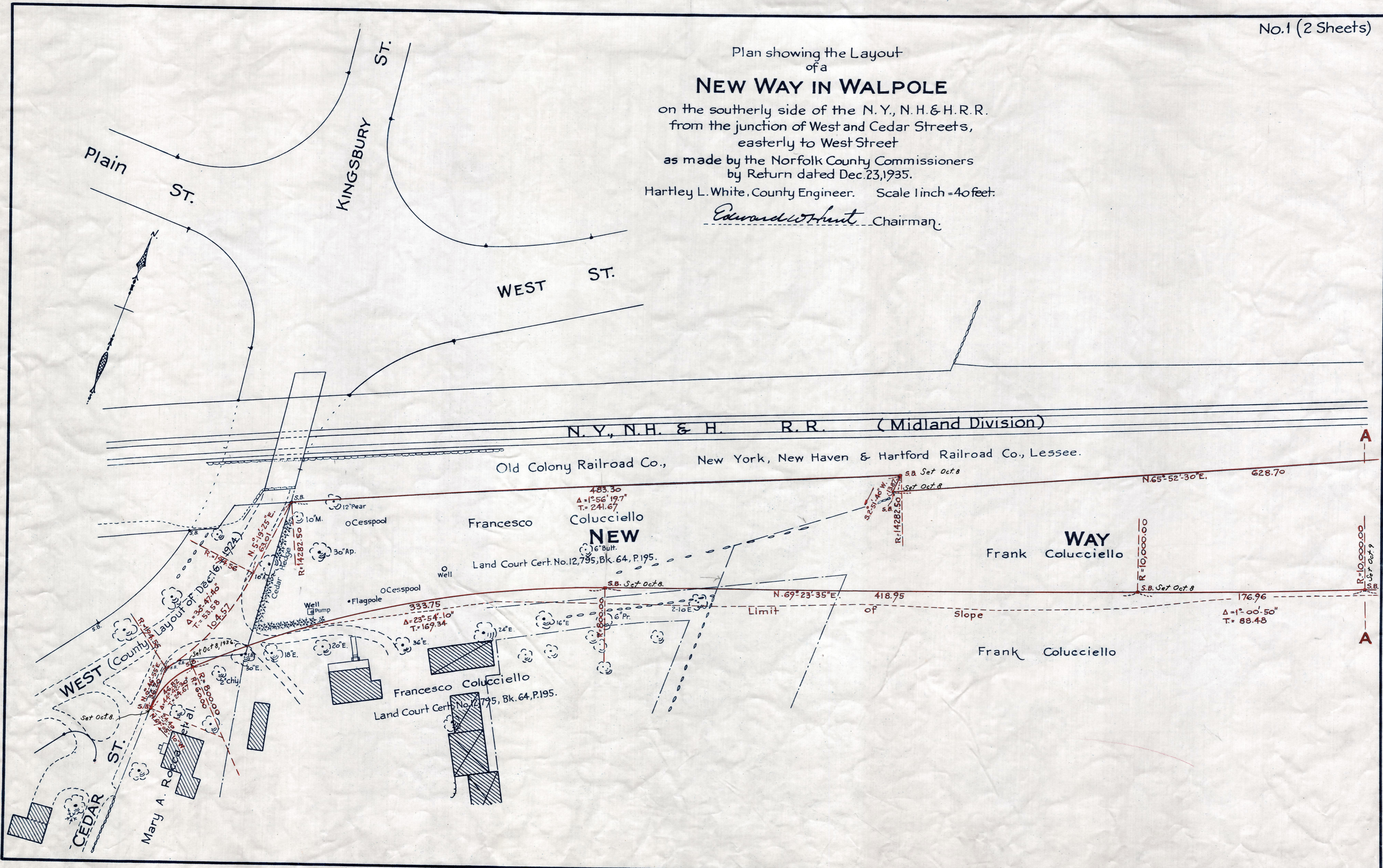
Plan showing the Layout
of a
NEW WAY IN WALPOLE

on the southerly side of the N. Y., N. H. & H. R. R.
from the junction of West and Cedar Streets,
easterly to West Street

as made by the Norfolk County Commissioners
by Return dated Dec. 23, 1935.

Hartley L. White, County Engineer. Scale 1 inch = 40 feet.

Edward W. Hunt Chairman.



TAKING - 2095-389
P.B. 119-509-516
Rec. Dec. 27, 1935

Date of Entry May 21, 1936.

This layout is Void due to action by the Town of Walpole
See Doc. # 90706 in Envelope # 74

5/21/36