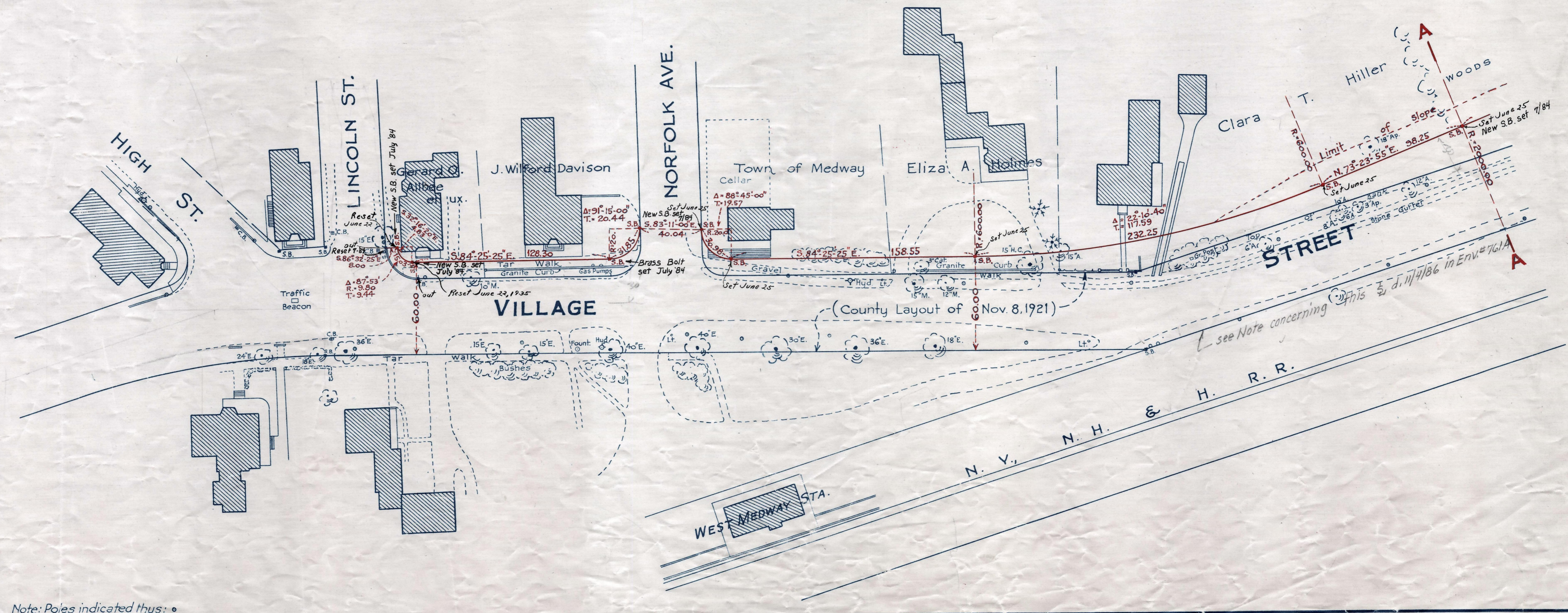
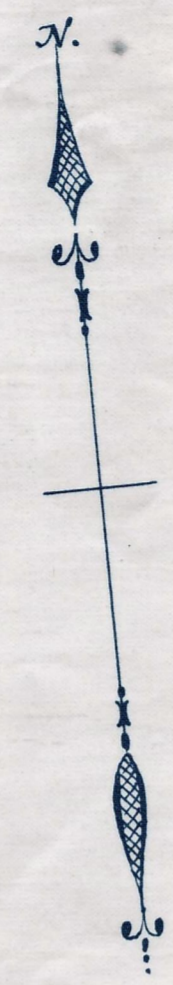


Plan showing the Relocation and Widening of
VILLAGE STREET
 between Lincoln St. and Shaw St. and
COTTAGE STREET
 between Village St. and Williams St. in the
TOWN OF MEDWAY
 as made by the Norfolk County Commissioners
 by Return dated April 23, 1935.

Edward W. Hunt Chairman

Hartley L. White, County Engineer.

Scale 1 inch = 40 feet.



Note: Poles indicated thus: o

Date of Entry July 1, 1935.

TAKING - 2067-306
 P.B. - 119-132-133
 Rec: MAY 4, 1935