

Plan showing the Relocation and Widening
of

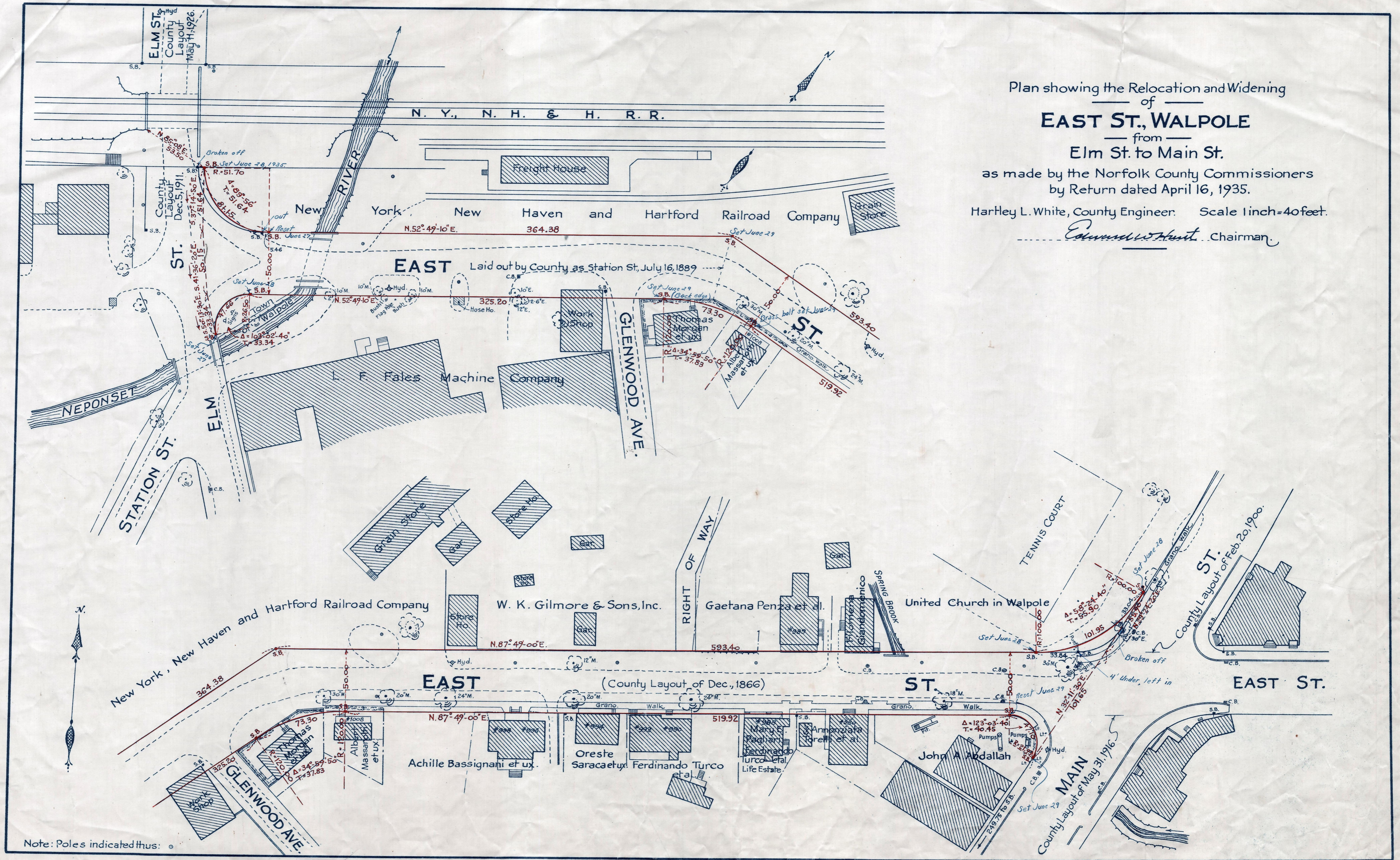
EAST ST., WALPOLE

from
Elm St. to Main St.

as made by the Norfolk County Commissioners
by Return dated April 16, 1935.

Hartley L. White, County Engineer. Scale 1 inch = 40 feet.

Edward W. Hunt, Chairman.



Note: Poles indicated thus: o

4/29/35

Date of Entry April 29, 1935.

TAKING - 2066-216 Rec: Apr. 18, 1935

P.B. - 119-#119