

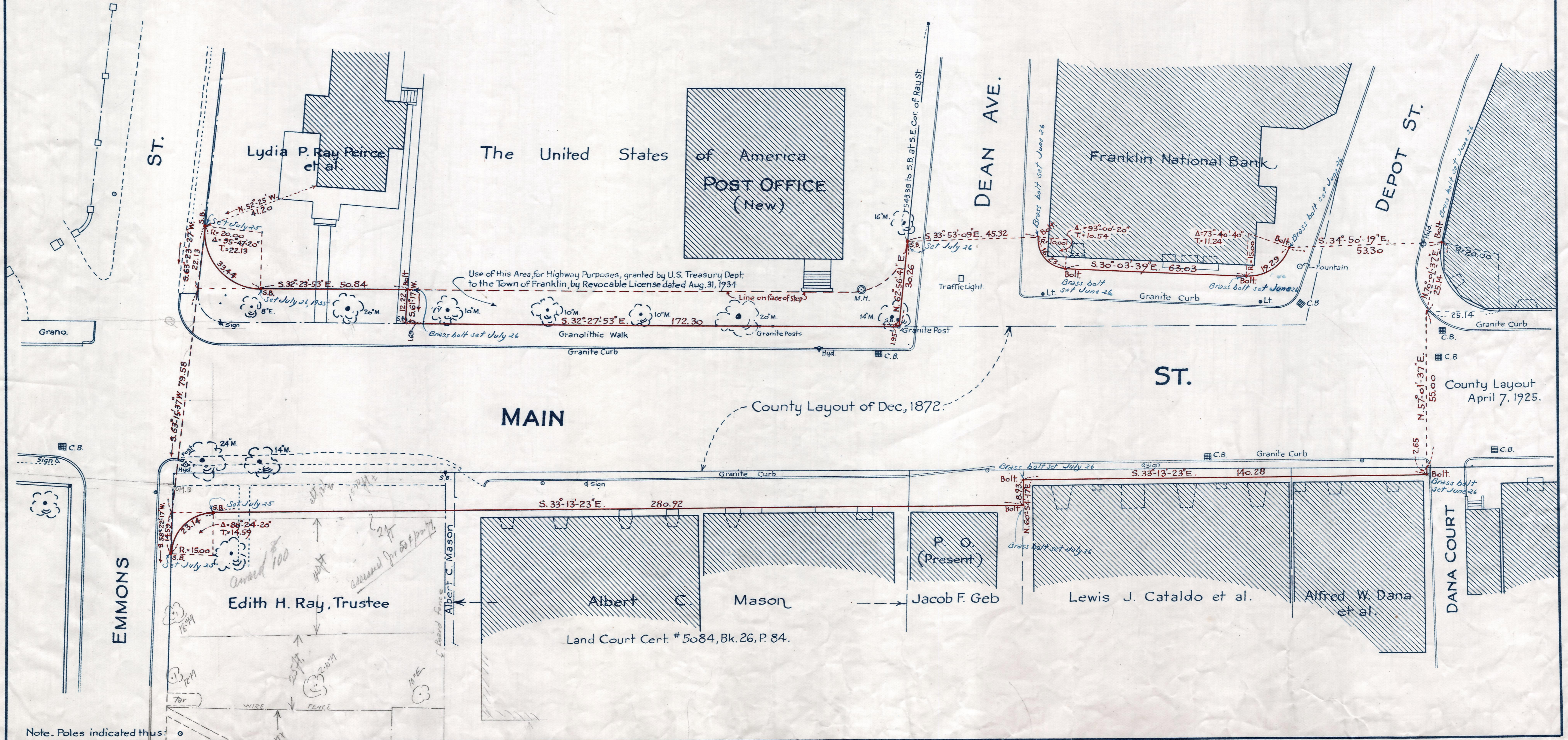
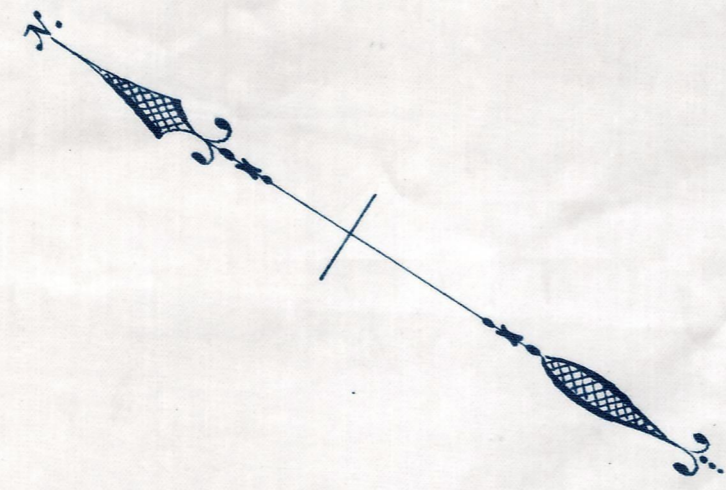
Plan showing the Relocation and Widening
of
MAIN ST., FRANKLIN

from
Emmons St. to Depot St.

as made by the Norfolk County Commissioners
by Return dated April 2, 1935.

Hartley L. White, County Engineer. Scale 1 inch = 20 feet.

Edward W. Hunt Chairman.



Note. Poles indicated thus: ○

Date of Entry May 1, 1935. 220
 TAKING - 2065-343
 P.B. - 119-98
 REC. Apr. 5 1935

5/1/35