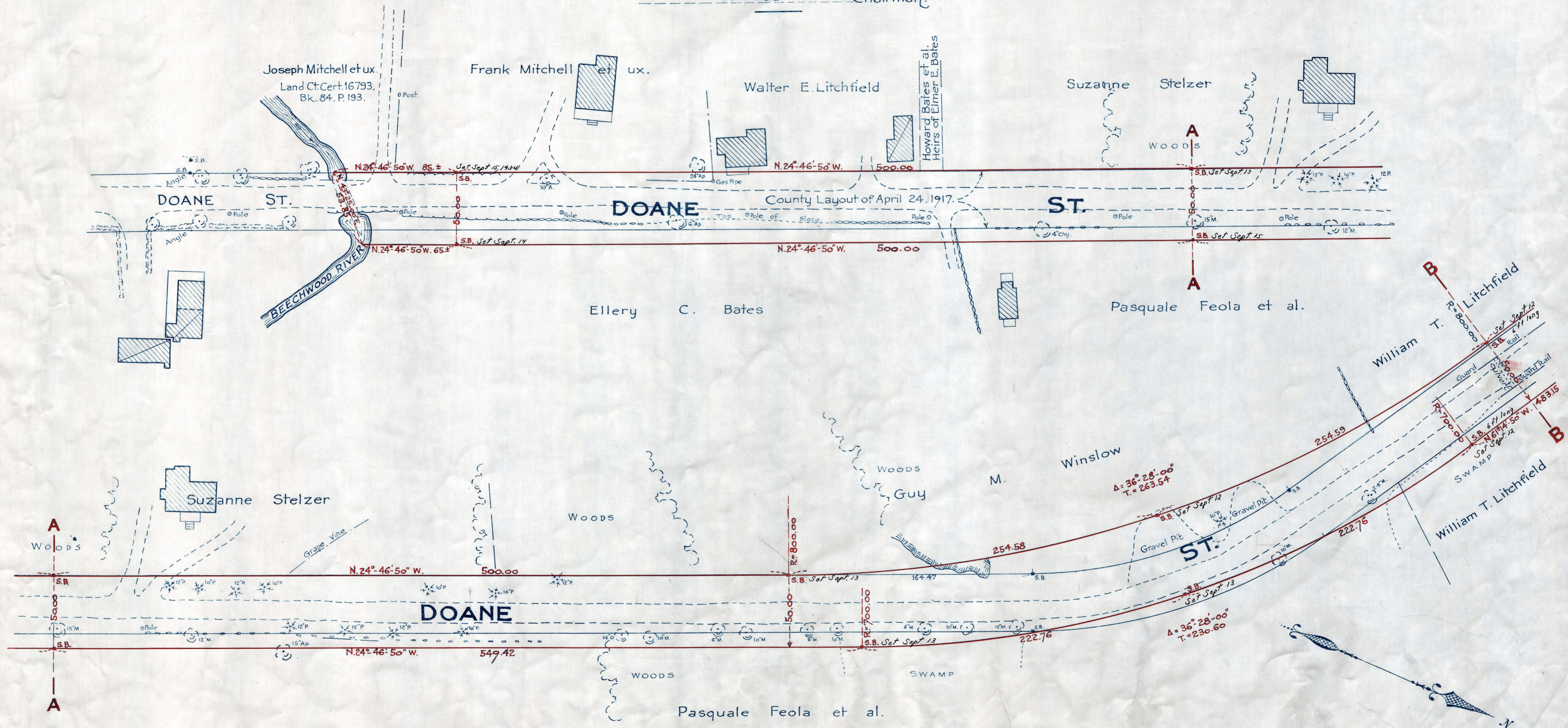


Plan showing the Relocation and Widening
of
DOANE ST., COHASSET
from
Beechwood River to the Mingham Town Line
as made by the Norfolk County Commissioners
by Return dated Aug. 7, 1934.
Hartley L. White, County Engineer. Scale 1 inch = 40 feet.
Edward W. Hunt Chairman.



P.B. 118 # ~~345~~ 387-90
TAKING 2037-152
Rec. 8-15-34

Date of Entry Sept. 6, 1934.