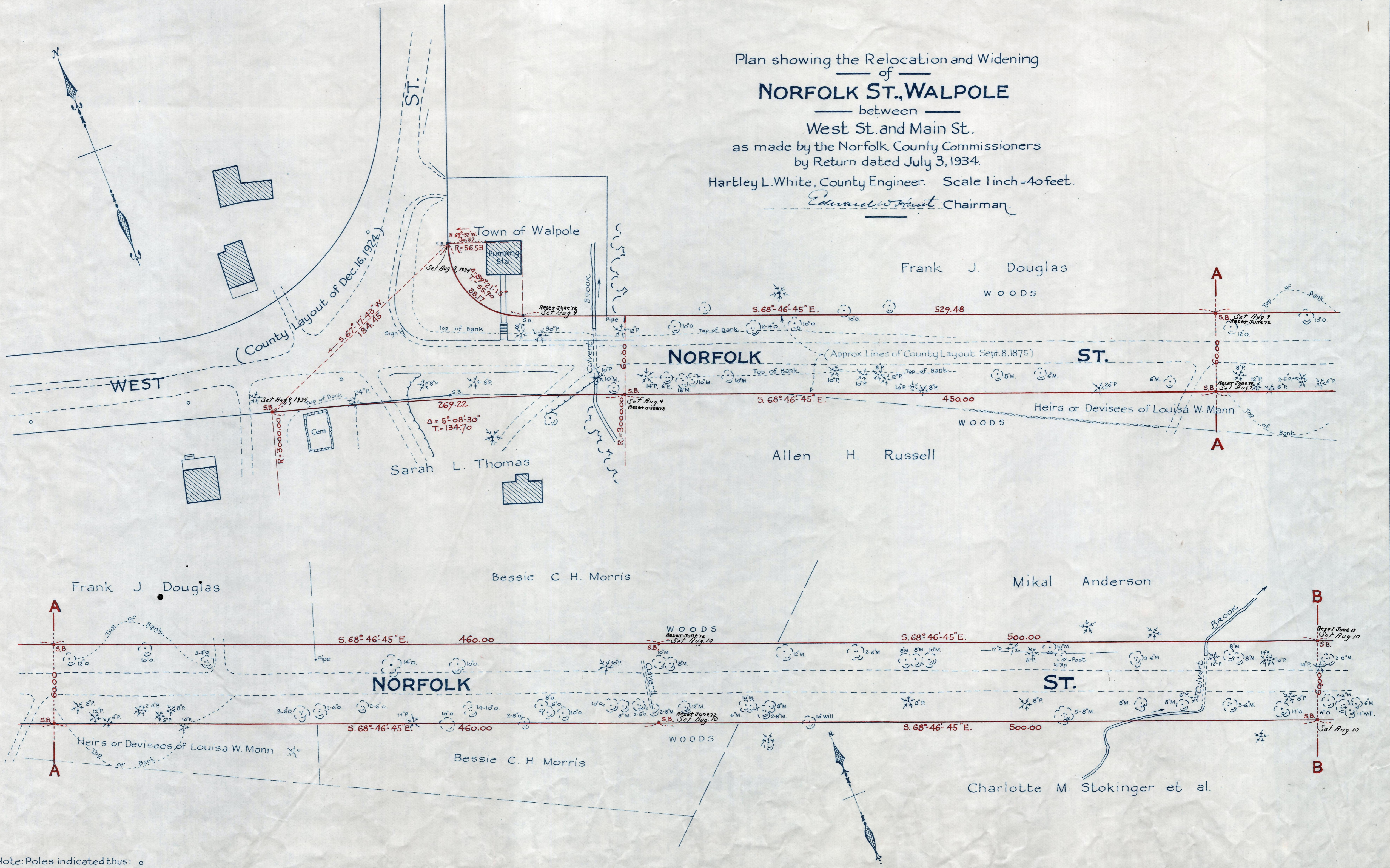


Plan showing the Relocation and Widening
 of
NORFOLK ST., WALPOLE
 between
 West St. and Main St.
 as made by the Norfolk County Commissioners
 by Return dated July 3, 1934.
 Hartley L. White, County Engineer. Scale 1 inch = 40 feet.
Edmund W. Hunt Chairman



Note: Poles indicated thus: o

Date of Entry July 17, 1934. 214
 P.B. 118 - 335-6
 TAKING 2033-424
 Rec-7-10-34