

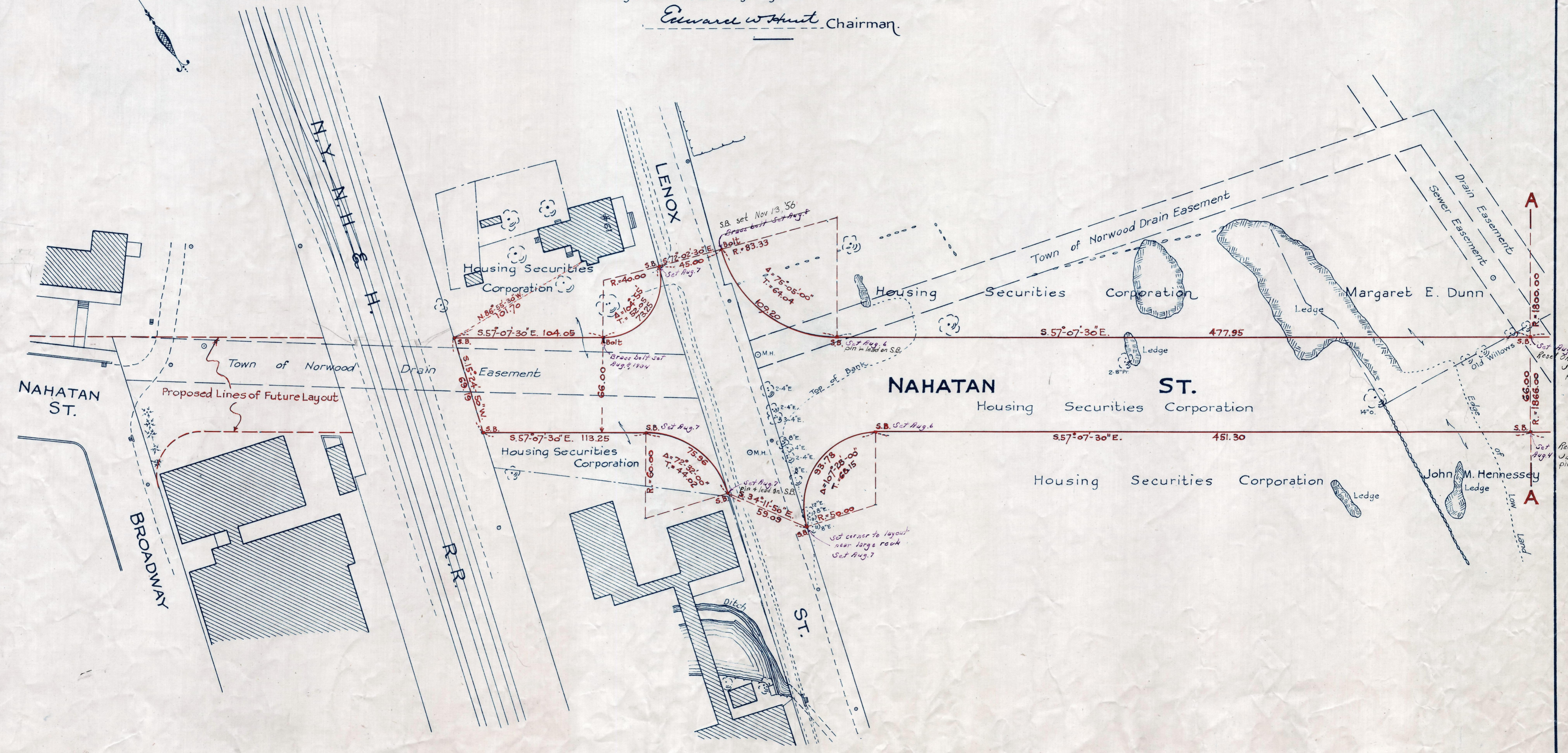
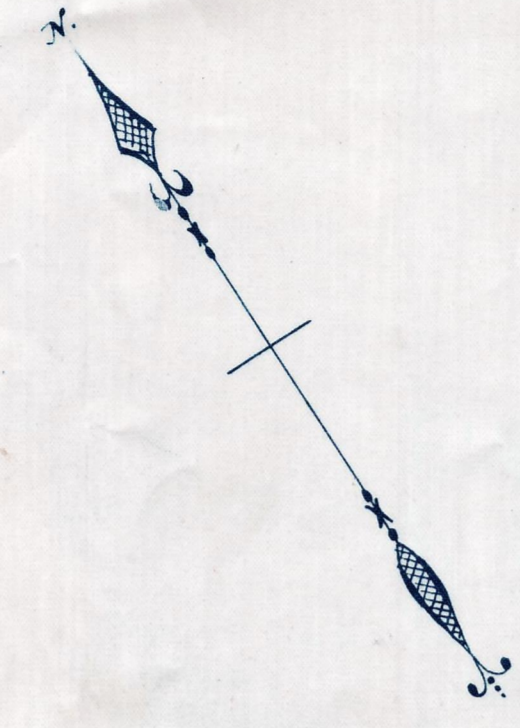
Plan showing the Location
of
NAHATAN ST., NORWOOD

between
N.Y., N.H. & H. R.R. and Pleasant St.

as made by the Norfolk County Commissioners
by Return dated June 19, 1934.

Hartley L. White, County Engineer. Scale 1 inch = 40 feet.

Edward W. Hunt Chairman.



Note: Poles indicated thus: \circ

Date of Entry Aug. 15, 1934.

P.B. 118-315-16
TAKING-2032-6
Rec.-6-25-34