

Plan showing the Relocation and Widening

POND STREET

from the Randolph Town Line to Granite St.

GRANITE STREET

from Pond St. to West St.

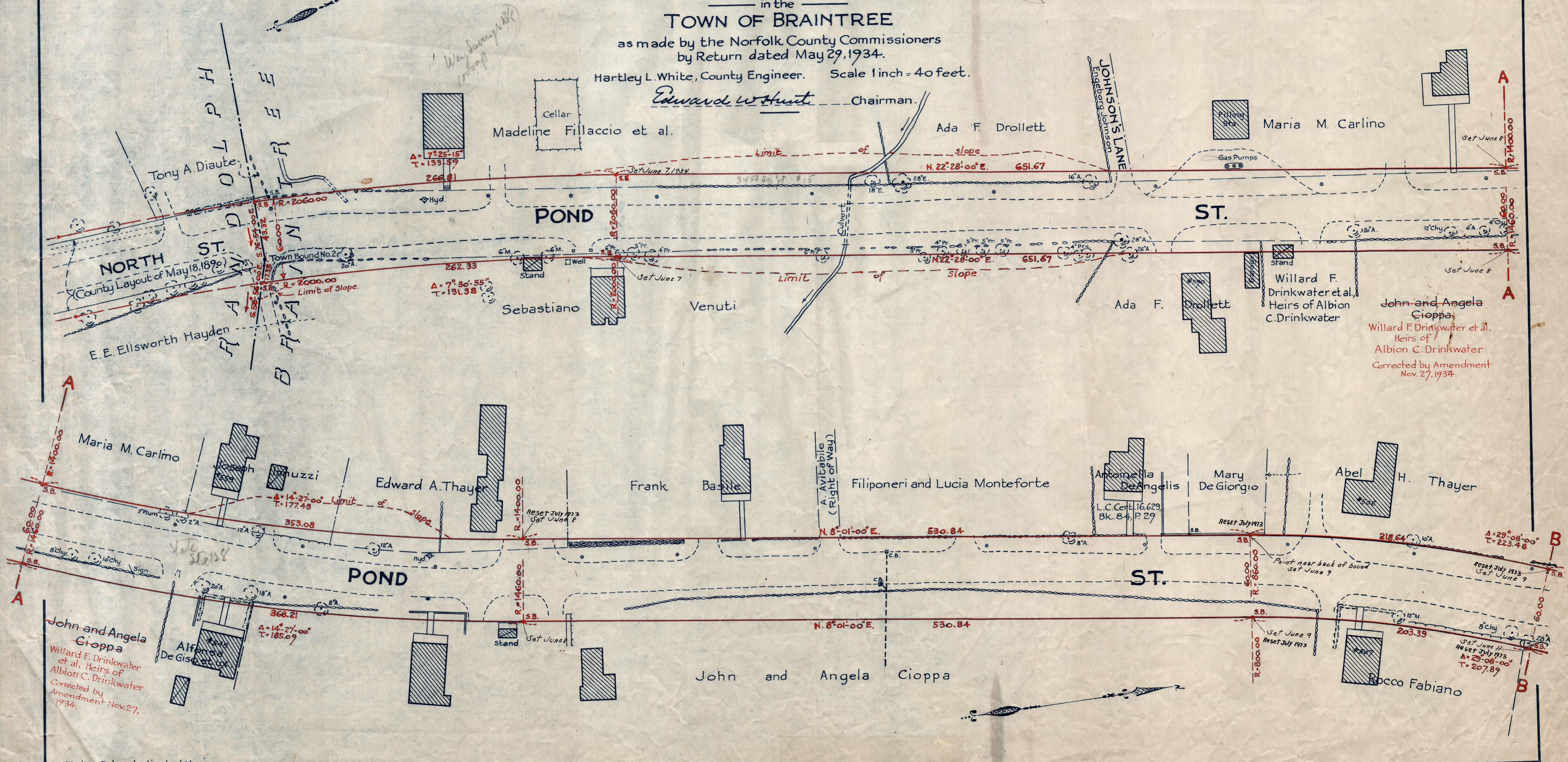
in the TOWN OF BRAINTREE

as made by the Norfolk County Commissioners by Return dated May 29, 1934.

Hartley L. White, County Engineer. Scale 1 inch = 40 feet.

Edward W. Hunt Chairman.

A TRUE COPY.
Attest *R. B. Worthington* Clerk.



Note. Poles indicated thus: ○

TAKING 2029-370 P.B. 118 291-4 of 34
RECORDED June 8, 1934

Date of Entry July 10, 1934.