

Plan showing the Relocation and Widening
of

NORTH ST., RANDOLPH

from

N.Y., N.H. & H. R.R. to the Braintree Town Line

as made by the Norfolk County Commissioners
by Return dated May 29, 1934.

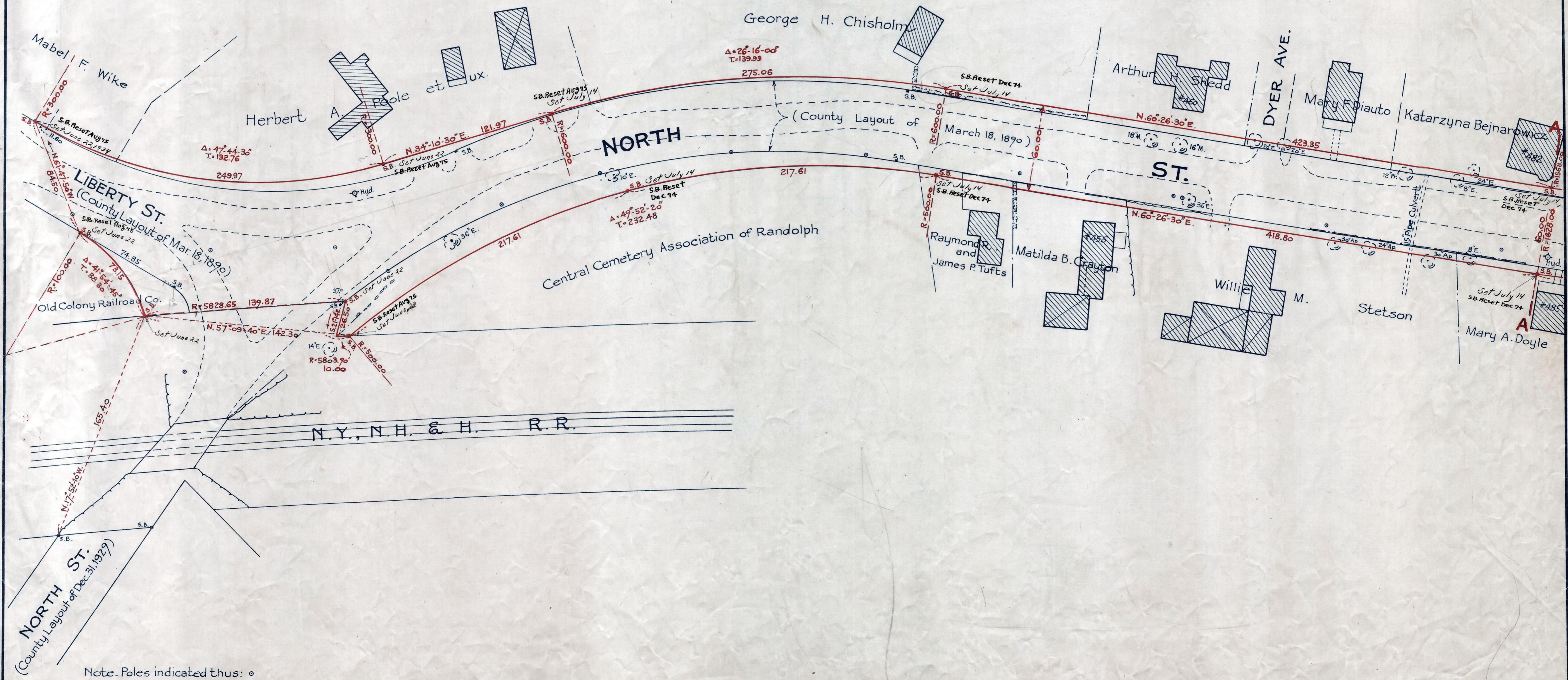
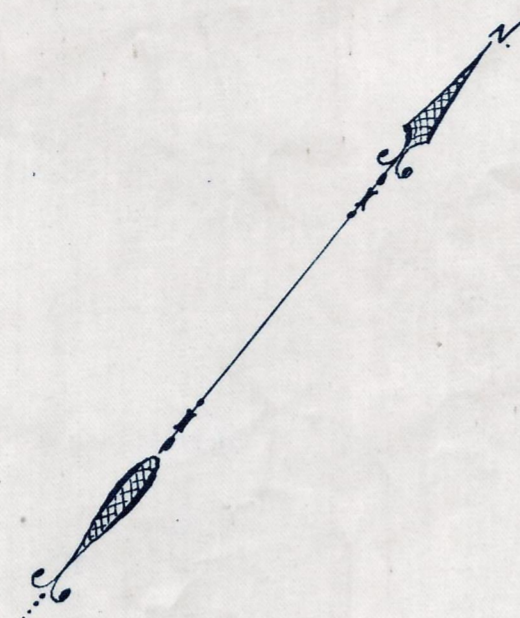
Rec June 8.

Hartley L. White, County Engineer. Scale 1 inch = 40 feet.

Edward Whit Chairman.

- A TRUE COPY -

Attest R. B. Bortner Clerk.



Note - Poles indicated thus: \circ

Date of Entry Aug 4, 1934.

P.B. 117-287-290
TAKING-2029-363
Rec. 6-8-34