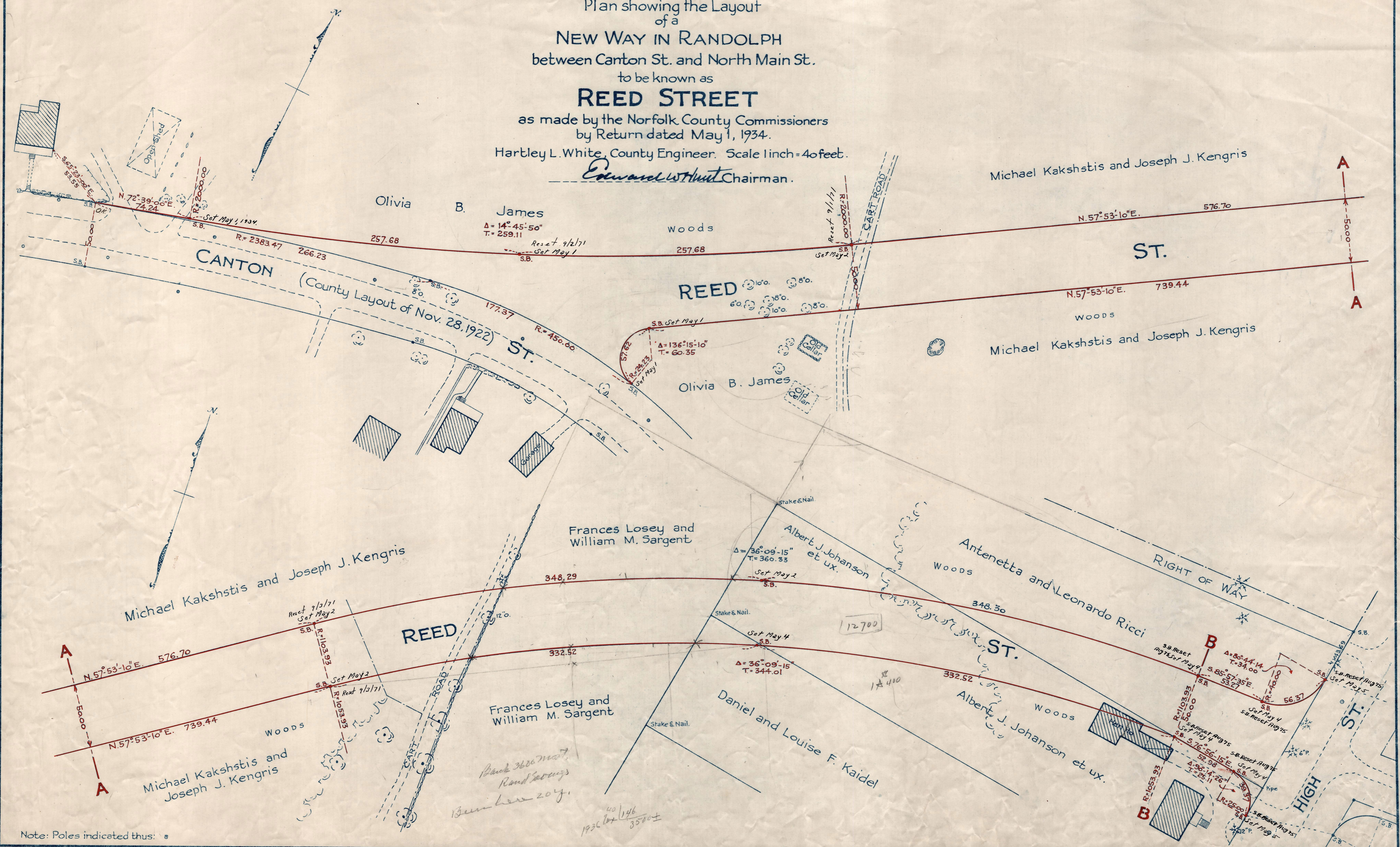


Plan showing the Layout
of a
NEW WAY IN RANDOLPH
between Canton St. and North Main St.
to be known as
REED STREET
as made by the Norfolk County Commissioners
by Return dated May 1, 1934.
Hartley L. White, County Engineer. Scale 1 inch = 40 feet.
Edward Whitcomb Chairman.



Note: Poles indicated thus: ●

Handwritten notes:
Paid 6/25 42/4
Hb with 10 R. over 100 years.
Not record book stops value probably not over 3000 by him 1000
Entry June 1934

Date of Entry June 12, 1934.

P.B. 117-198-99
TAKING - 2026-41
Rec. 5-9-34