

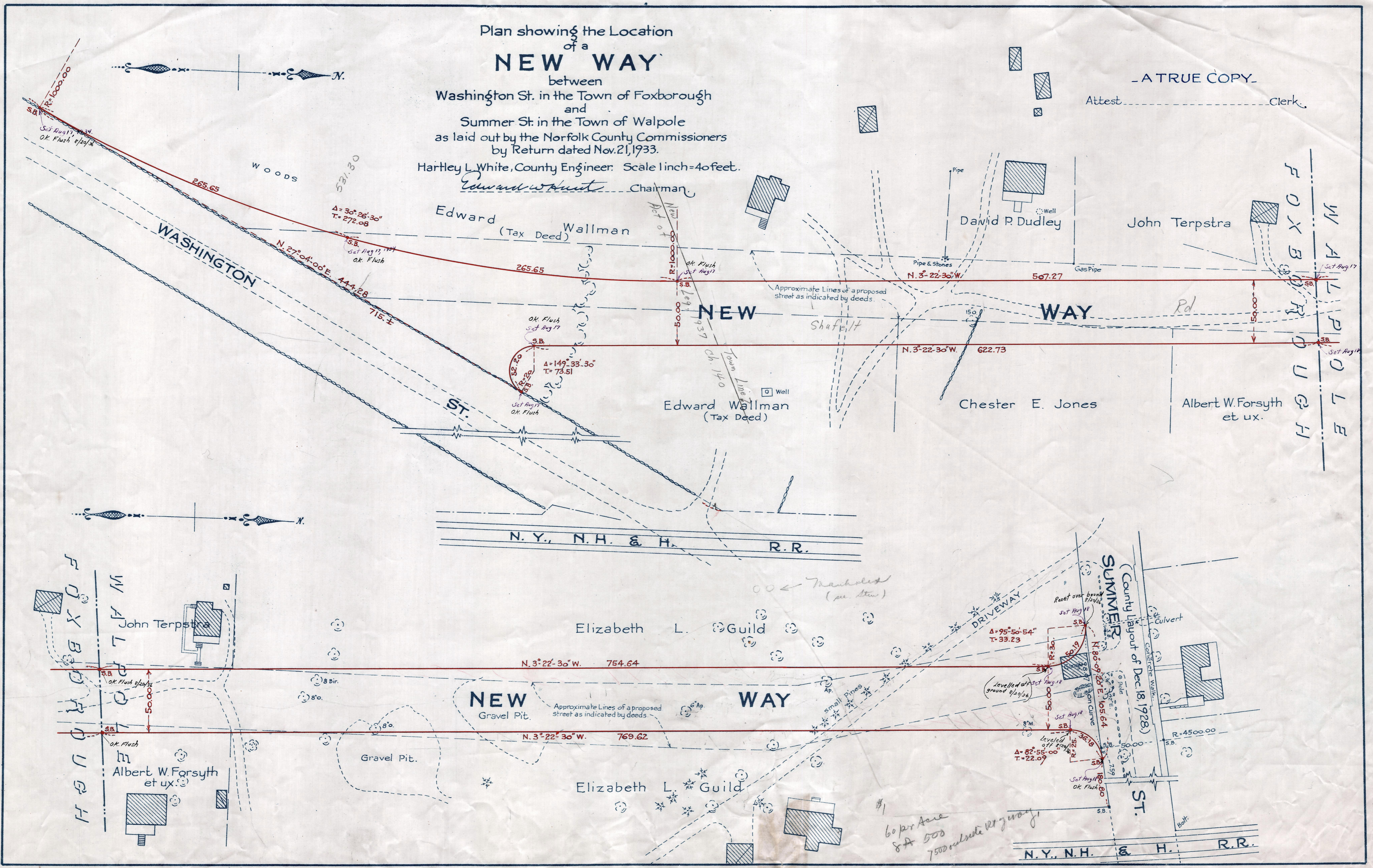
Plan showing the Location  
of a  
**NEW WAY**

between  
Washington St. in the Town of Foxborough  
and  
Summer St. in the Town of Walpole  
as laid out by the Norfolk County Commissioners  
by Return dated Nov. 21, 1933.

Hartley L. White, County Engineer. Scale 1 inch = 40 feet.  
*Edward Wallman* Chairman

- A TRUE COPY -

Attest \_\_\_\_\_ Clerk



Date of Entry Nov. 21, 1933. 205

P.B. 117-468  
TAKING 2016-428  
Rec. 11-27-33